

Delivering an Assessment with the SMART Response™ System




This quick reference teaches you how to deliver an assessment using SMART Notebook™ collaborative learning software and the SMART Response™ interactive response system. Before you begin, make sure that you install SMART Notebook and SMART Response software on your computer.

Starting a class

Before you start an assessment you must connect your students by starting a class. Starting a class enables students to identify themselves by entering their Student ID numbers. Students can't answer questions until you start the assessment.

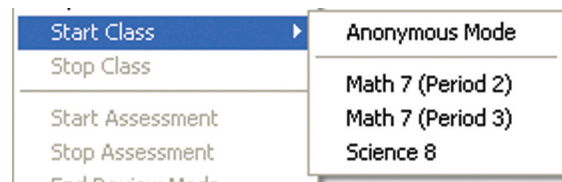
TIP: Start a class at the beginning of the lesson to ensure students are ready to answer questions when you're ready to ask them. You can start a class once and run multiple assessments or single questions.

To start your class

1. Click the **SMART Response** icon  in the Windows® notification area or Mac® Dock
2. Select **Open Notebook Software**. SMART Notebook software opens.
3. Open the .notebook file that contains the assessment you want to deliver
4. Select **Response > Start Class** in the main menu bar
5. Select the class that you want to deliver the assessment to

NOTE: You can select **Anonymous Mode** if you haven't used the Teacher Tools Gradebook to set up class lists or if you don't want to identify student responses.

6. The *Class Started* notification window appears



Delivering an Assessment with the SMART Response™ System

Connecting students

Once you have started the class, your students can connect to it and enter their student ID numbers. The procedure for connecting to a class varies depending on what SMART Response model your students are using to answer questions.

NOTE: You must pair each SMART Response LE clicker to your receiver and to a student. The clickers will then connect automatically to your class, making it easy for very young students to answer questions. For more information on pairing SMART Response LE clickers, see the [Getting Started with SMART Response LE](#) quick reference guide.



To connect to a class

	SMART Response LE	SMART Response PE	SMART Response XE	SMART Response CE	SMART Response VE NOTE: Students can't connect to SMART Response VE until you start an assessment
1.	Press and hold the Power button on the clicker for about one second. A welcome message appears.			Open SMART Notebook SE Software	Open a web browser on the mobile device or computer
2.	N/A	Select the class you want to join from those within range		Browse to response.smarttech.com and enter the assessment ID	
3.		Enter your student ID number (unless the assessment is delivered in Anonymous Mode)			

Starting an assessment

Start the assessment in SMART Notebook software when you're ready for your students to enter responses to questions.


To start the assessment

1. Display the first question or the assessment title page
2. Select **Response > Start Assessment** in the main menu bar. *The Progress area of the SMART Response tab appears.*

Delivering an Assessment with the SMART Response™ System

Delivering an assessment

After you use SMART Notebook software to start an assessment, students can start responding to questions.

1. Display the first question of your assessment
2. Have students respond to the question
3. Use the information in the *SMART Response* tab to monitor how many students have answered the question and how much time has elapsed
4. Press the **Next Page** button  to display the next question
5. Press **Stop this assessment** when the final question has been answered. The *Results* area of the *SMART Response* tab appears and students can no longer enter responses.

NOTE: When using SMART Response LE, you must start and stop each question individually. When using SMART Response CE and VE, students can progress through an assessment at their own pace because the questions are displayed on their computer or mobile device.

TIP: You can use the *Results preview* feature to display the current breakdown of responses at any time during the assessment.

