

Getting Started with the Senteo Interactive Response System

The Senteo™ interactive response system is an assessment tool designed to enhance learning. You can pose questions during your presentation or lesson to make sure your audience is on track, or you can create a Question Set and use it as a formal assessment tool.

This *Quick Reference* provides basic information about the Senteo interactive response system's hardware components, including setting up the system for your class or presentation. Before you begin, make sure that Senteo assessment software is installed on your computer.

The receiver

The Senteo interactive response system operates on radio frequencies. The receiver acts as a hub to collect responses from the clickers.

After installing Senteo assessment software on the computer, plug the receiver into an available USB port on your computer. After installing the receiver, the Ready light turns red, indicating that it is receiving power. This light turns green when the receiver is both receiving power and communicating with Senteo assessment software.



To avoid possible interference, position the receiver as high as possible and in plain view of the students' clickers. Also, try to position the receiver away from other wireless products such as cordless telephones or 2.4 GHz routers.

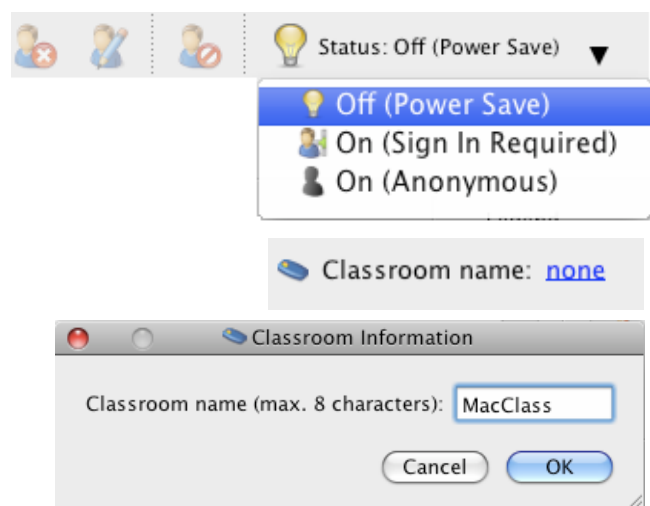
Naming the classroom

Once you have connected the receiver, and before you turn the clickers on, name your classroom. To name your classroom, do the following:

- 1 Access the Senteo Manager window by selecting the **Senteo Desktop Menu** icon in the Dock. If the icon does not appear in the Dock, select **Finder > Applications > Senteo > Senteo Desktop Menu**.
- 2 Select **Senteo Manager** from the menu. The Senteo Manager appears.
- 3 In the Senteo Manager toolbar, press the options arrow beside the Status button, and select **Status: Off (Power Save)**.
- 4 Press the blue underlined *Classroom name* to edit it.
- 5 When the *Classroom Information* dialog box appears, type a class name and press **OK**.

TIP: The clickers display a maximum of eight characters for the classroom name.

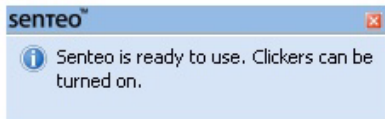
You can now begin to use Senteo assessment software in Anonymous mode.



Using Senteo assessment software in Anonymous mode

You can use the Senteo interactive response system in Anonymous mode without opening or creating a class list. This allows you to pose questions without assigning a particular person to a clicker. This is useful in a classroom if you wish to gauge whether your students are ready to move on. To start Senteo assessment software in Anonymous mode, do the following:

- 1 Select the **Senteo Desktop Menu** icon in the Dock and select **Senteo Manager** from the menu to access the Senteo Manager window
- 2 Press the options arrow beside the **Status** button, and select the **On (Anonymous)** option



Once you select the On (Anonymous) mode, the receiver's power LED turns green, and the transmit LED flashes green. Watch for the message *Senteo is ready to use* on your screen.

Turning on the clickers

Once you receive the message that Senteo assessment software is ready to use, you can turn the clickers on. To turn on the clickers, do the following:

- 1 Press and hold the **Power** button on the clicker for about one second
- 2 A message appears. You can choose either to join the last class the clicker was connected to or to find a different class.
- 3 If you want to join the last class, simply press the **Enter** button
- 4 To find a different class, press the **Down** button, and then press **Enter**
- 5 Press the **Up** and **Down** buttons to scroll through the list of classes in range, and when you have found the correct one, press **Enter**

A welcome message appears. The clickers are now ready to respond to questions.

