

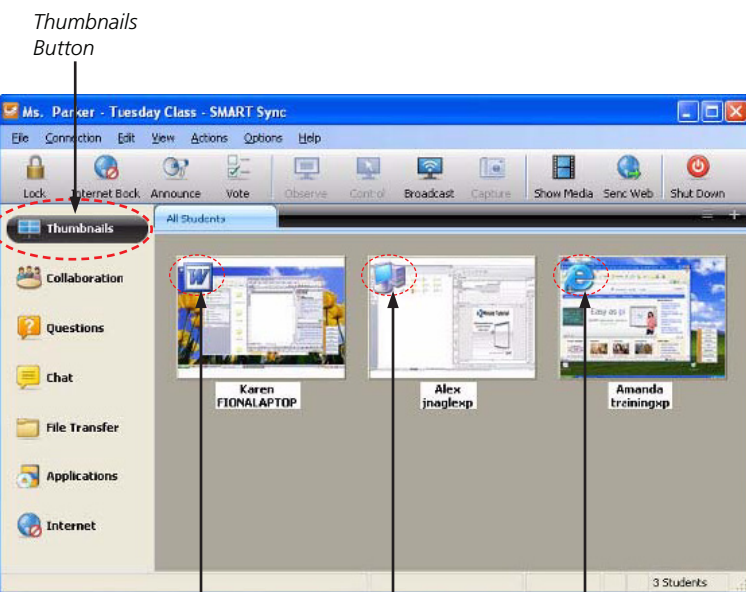
# Monitoring Student Computers with SMART Sync Software



Use SMART Sync software to monitor student computer screens. The intuitive interface helps you observe computer activity and give instruction to the whole class or an individual student.

## Monitoring the whole class

The Thumbnails view displays a small image of each student's screen, enabling you to monitor what each member of the class is doing. SMART Sync software automatically opens to the Thumbnails view, but if you leave the Thumbnails view for any reason, you can return to it by pressing the Thumbnails button on the left side of your screen.



Note: The icons in the top left corner of the student thumbnails indicate which program is active on the student desktop.

Select **View > Thumbnail Size** or **Thumbnail Arrangement** to change the size and arrangement of your thumbnails. This function enables you to customize how you see your students' screens.

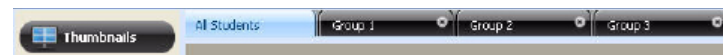
## Monitoring an individual student

Double-click a student thumbnail to view a larger image of the student's desktop in a resizable window (Window mode). Observing a student screen in Window mode enables you to focus on an individual student desktop and monitor the rest of the class at the same time.

If you're looking at a student's desktop in Window mode, and you want to view the student's screen in Full Screen mode, select **Menu > View in Full Screen Mode**.

## Creating groups

Tailor your instruction for students of different ages or ability levels by dividing the class into groups. A tab for each group you create appears at the top of each view. Select a tab to observe the group of your choice, and chat with or poll group members about their work, while leaving the rest of the class undisturbed.

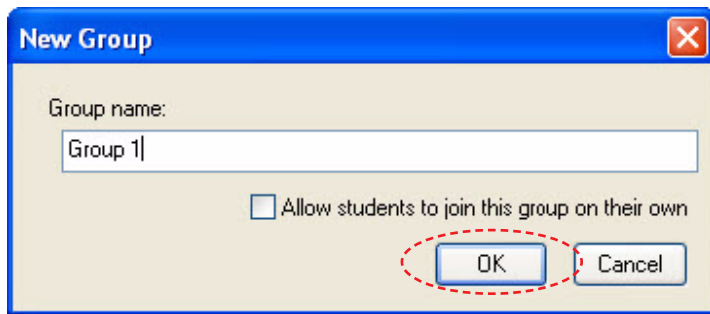


# Controlling Student Computers with SMART Sync Software

To set up a new group:

1. Select **Edit > Add Group**
2. Enter a name for your group in the *New Group* dialog box, and press **OK**

**TIP:** If you want students be able to add themselves to a group, select the check box labeled *Allow students to join this group on their own* when creating the group. This is useful if you want to allow students to determine their own ability level.



To add students to a group:

1. Select the tab for the group to which you want to add students
2. Select **Edit > Modify Group**
3. In the *Edit* dialog box, select the student you want to add
4. Click **Add**

**NOTE:** To remove a student from a group, select the student from the *Group members* pane, and then click **Remove**

