

Controlling Student Computers with SMART Sync Software

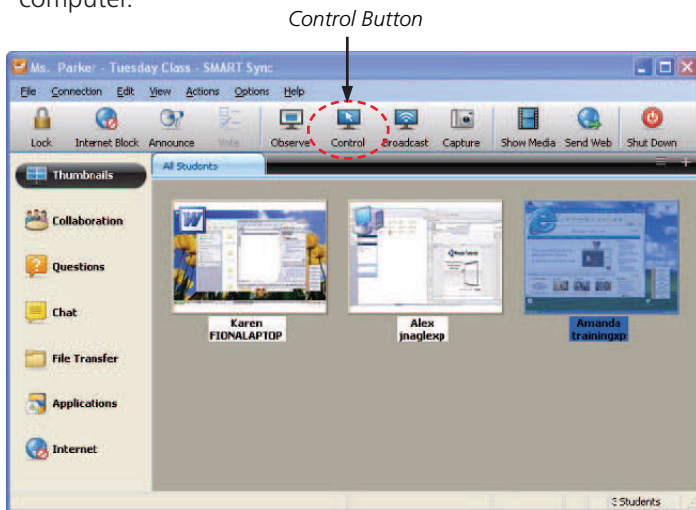


Some students require additional help when working with a computer, and others have difficulty staying on task. SMART Sync software allows you to guide student learning or focus their attention by controlling their computers.

Taking control of a student computer

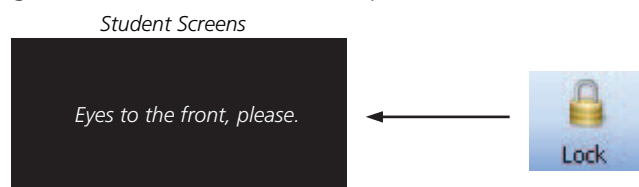
You can direct instruction by remotely controlling a student's computer. To take control, select a student thumbnail and click the **Control** button in the main toolbar.

A larger image of the selected student desktop appears, and you have mouse and keyboard control of the student's computer.



Getting student attention

You can get your students' attention by blacking out all their screens and disabling mouse and keyboard input. To do this, click the **Lock** button in the top-left corner of the SMART Sync software interface. An alert message over a black background appears on your students' screens until you release the lock. Click the **Lock** button again to unlock the student computers.



TIP: Select **Options > Preferences** for the option to edit the Lock Screen message.

Broadcasting a desktop

Explain complicated procedures, or give an in-depth presentation by broadcasting your desktop or a student desktop to the class. When you broadcast a desktop, you disable student computer control.

NOTE: In a classroom with both Mac® and Windows® computers, the broadcast feature is disabled.

To broadcast your own desktop image:

1. Click the tab for the group of students you want to broadcast to (click the **All Students** tab, to broadcast to the entire class)
2. Click **Broadcast**

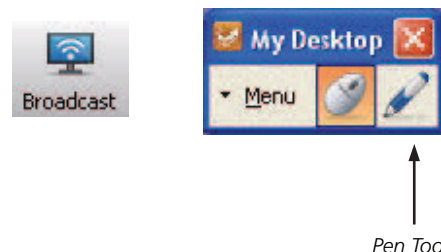
To broadcast a student desktop:

1. Click a student thumbnail
2. Click **Broadcast**

NOTE: When you broadcast a student desktop, you take remote control of the student's desktop.

When broadcasting, the SMART Sync software interface changes to a floating toolbar. The smaller toolbar enables you to focus on the content you are broadcasting and gives you access to a pen tool to write and draw over the broadcasted desktop. Select **Menu > Stop Broadcasting** to return to the Thumbnails view and allow your students to control their own computers.

TIP: You can allow students access to a pen tool to draw and write over a broadcasted desktop by "Passing the Chalk" to them. To pass the chalk, select the student thumbnail and select **File > Pass the Chalk**.



Controlling Student Computers with SMART Sync Software

Blocking student Internet access

To block access to the Internet, select a student or a group of students, and click the InternetBlock button in the main toolbar.



The Internet Block activates all of the Internet blocking rules listed under the Internet view. Internet blocking rules allow you to specify which websites you want students to have access to.

NOTE: In a classroom with both Mac and Windows computers, teachers can only allow or block access to the Internet. They cannot create rules to allow or block access to specific websites.

To create a new Internet blocking rule:

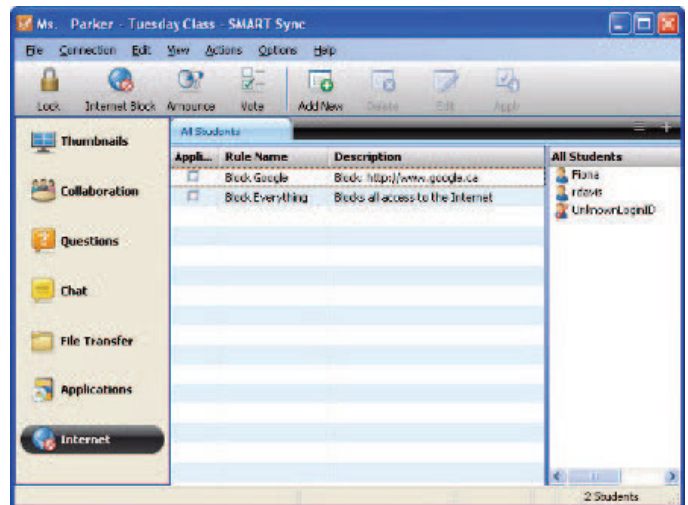
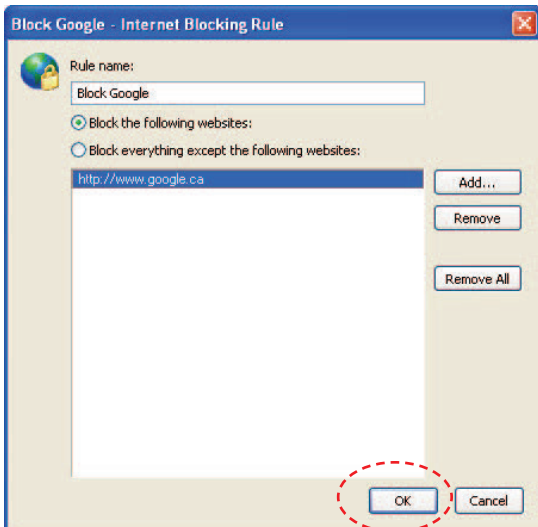


1. Click the **Internet** button on the Views menu
2. Click the **Add New** button in the top toolbar. The *New Internet Blocking Rule* dialog box opens.
3. Enter a name for the new rule in the text field at the top of the dialog box
4. Click the **Add** button, type the website address in the text field and click **OK**
5. Click **OK** to create the new rule. Your new rule appears in Internet view and will be available for selection every time you use SMART Sync software.

To apply an Internet blocking rule:

1. Select the check box beside the new rule to activate it
2. Click the **Internet Block** button

NOTE: The **Internet Block** button only blocks Web pages accessed using Internet Explorer® Internet browser. If your students use a browser other than Internet Explorer, you can block Internet access with the application blocking feature outlined on the next page.



Controlling Student Computers with SMART Sync Software

Blocking student applications

If students are using an application that is distracting them from what they should be working on, you can use the **Applications** view in SMART Sync software to block it.

Some rules are already established in SMART Sync software. To access and use these rules, click the Applications button on the Views menu.

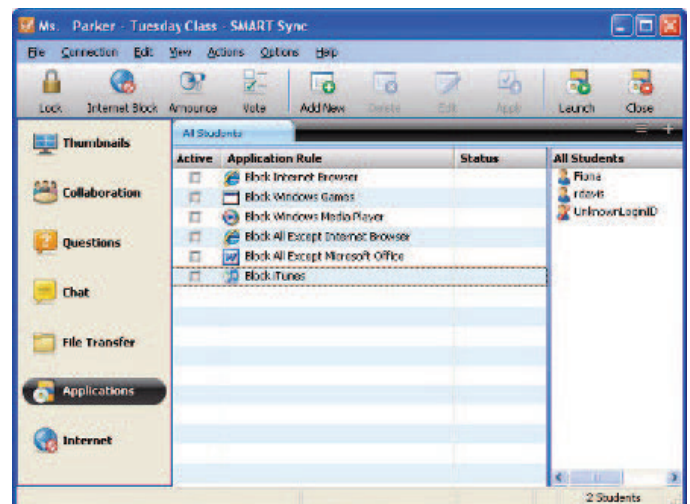
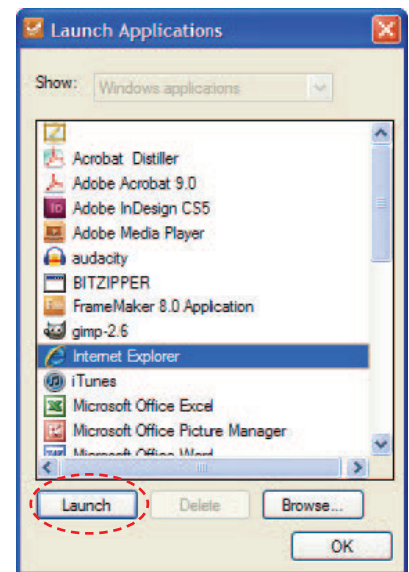
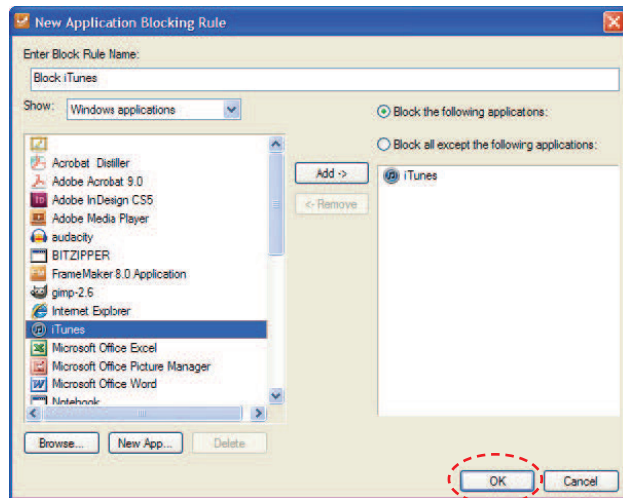
To create a new application blocking rule:



1. Click the **Applications** button on the Views menu
2. Click the **Add New** button in the main toolbar. The *New Application Blocking Rule* dialog box opens.
3. Enter a name for the new rule in the text field at the top of the dialog box
4. Select a program or use CTRL-CLICK to select a group of programs you want to block from the list on the left side of the dialog box
4. Click the **Add** button, then click **OK** to create the new rule. Your new rule appears in the Applications view and will be available for selection every time you use SMART Sync software.

To apply an Application blocking rule:

Select the check box beside the new rule to activate it



Launching applications on student computers

You can launch an application on all your students' computers to ensure everyone has access to the program at the same time.

To launch an application on student computers:

1. Click the **Applications** button on the Views menu
2. Click the **Launch** button in the main toolbar. The Launch Applications dialog box appears.
3. Select the program you want to launch, and click the **Launch** button
4. Click **OK**

when you are finished When you return to the Thumbnails view, the application you launched is active on the students' desktops.