

## Connecting and Customizing Multiple AirLiner Slates

The AirLiner™ wireless slate supports multiple connectivity. More than one user can write at the same time on separate slates. You can also customize the various function buttons and tool strips for a different feel or to limit options for certain users.

### Connecting multiple AirLiner wireless slates

You can connect more than one AirLiner wireless slate through a single Bluetooth® adapter. This can be useful during a brainstorming session or when you want to get input from more than one person. Both users can write and erase simultaneously, but only one user at a time can perform mouse clicks or other functions. To add a second AirLiner wireless slate complete the following steps:

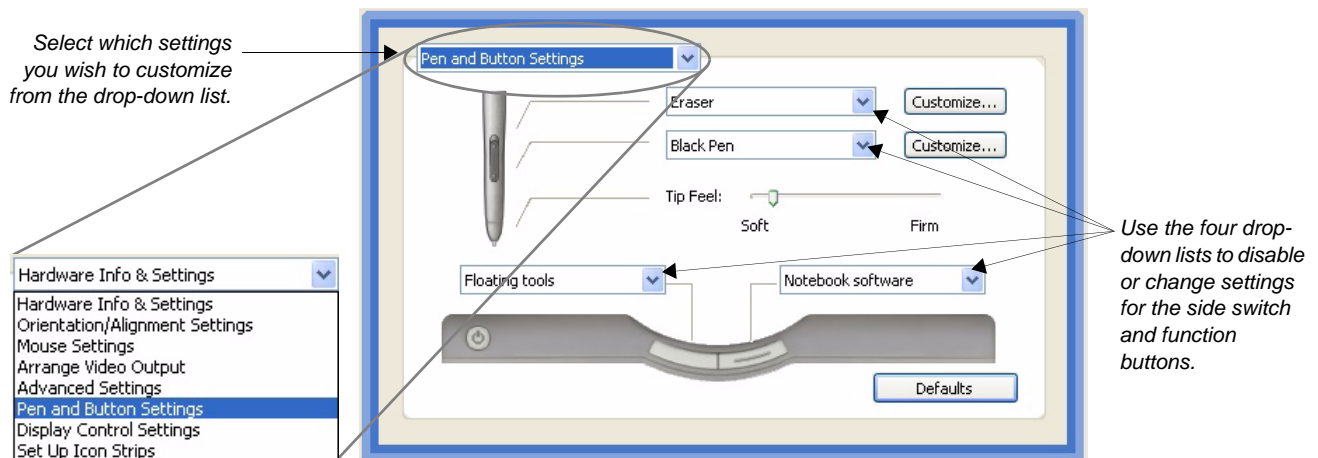
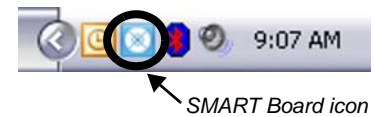
- 1 Press the **Power** button, and then the **Connect** button on the underside of the second AirLiner slate
- 2 Double-click the **Bluetooth** icon in the Windows notification area
- 3 Select the **Devices** tab in the *Bluetooth Devices* dialog box, and click the **Add** button
- 4 The Add Bluetooth Device Wizard appears. Check the box indicating that your device is set up and ready to be found, and then click **Next**.
- 5 The second wireless slate will appear in the list. Double-click its icon, and follow the on-screen instructions.

**TIP:** If you have problems connecting through a single Bluetooth adapter, turn the AirLiner slate off, then press the **Power** and **Connect** button again.

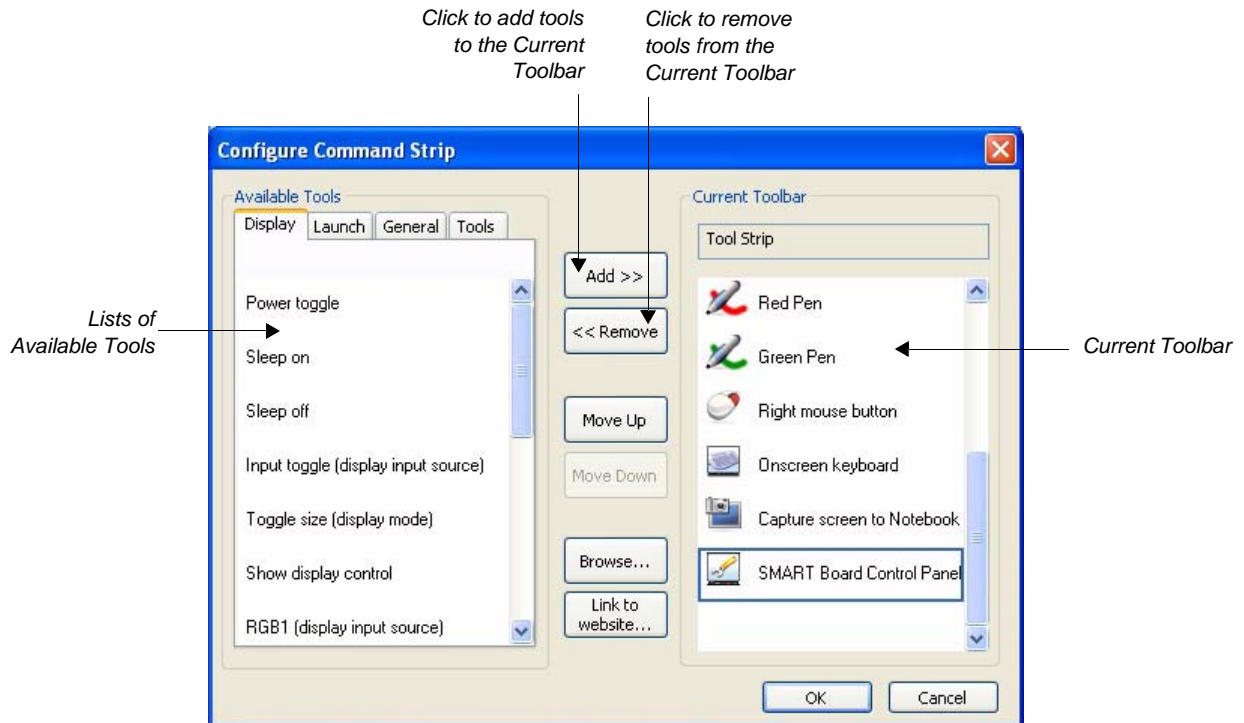
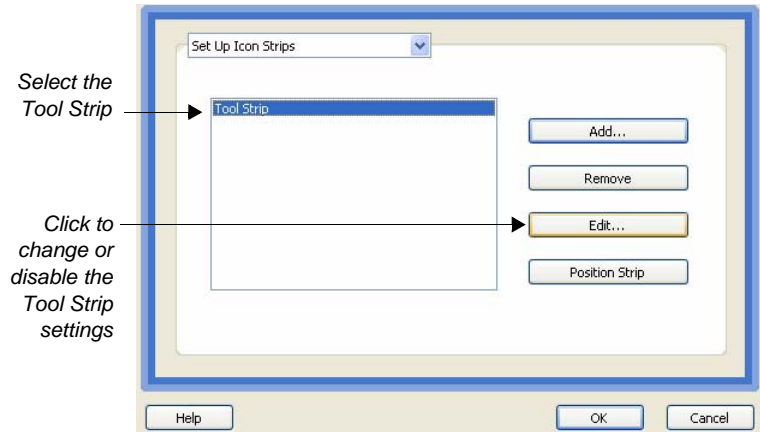
### Customizing the AirLiner slate

Once you have connected more than one wireless slate, you can customize its buttons and toolbars. For example, in a classroom setting or meeting, you may want to limit access on the slates to the pen and eraser tools only. To disable all but the pen and eraser tools do the following.

- 1 Right-click on the **SMART Board™** icon in the Windows notification area, and select **Control Panel**
- 2 Select **SMART Board Settings**. In the settings screen, you may see a number of devices listed.
- 3 Click on the icon of the AirLiner slate you wish to customize.
- 4 From the drop-down menu in the upper left corner, select the option for **Pen and Button Settings**.



- 5 Use the drop-down lists to disable the pen side switch, and to disable the two function buttons. This prevents a user from opening Notebook™ software or the Floating Tools toolbar, and render the side switch inactive.
- 6 Click **OK**, and then return to the drop-down menu in the upper left corner. Select the option to **Set Up Icon Strips**.
- 7 Select the **Tool Strip** and click **Edit**
- 8 Select the icon for the **SMART Board Control Panel**, and click **Remove**. This removes the ability for a user to access the Control Panel directly from the AirLiner wireless slate.
- 9 If you wish, repeat the process to remove the Capture, On-Screen Keyboard and the right-mouse buttons



- 10 You cannot leave toolbar spaces empty, so choose a tool from the **Available Tools** list to the left, and click **Add**. You can add the same tool (for example, Black Pen) four times to fill the spaces.
- 11 Click **OK** when you are finished

**TIP:** If you plan to remove the left-click function, be sure that you have another input device to control your applications (i.e., the wireless mouse, a SMART Board interactive whiteboard, or another AirLiner wireless slate).