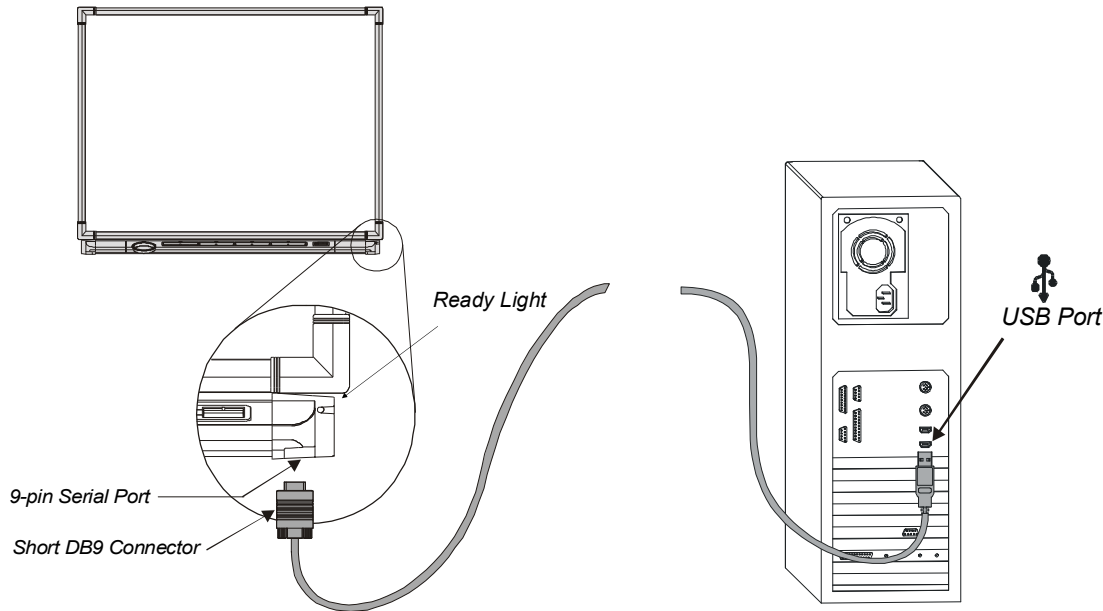


SMART Board™ Interactive Whiteboard Setup with USB Cable

The instructions below are for the SMART Board interactive whiteboard 500 series and apply to both desktop and laptop computers.



Connecting the SMART Board Interactive Whiteboard to Your Computer

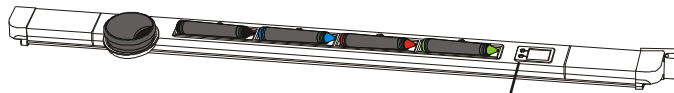
- 1 To install SMART Board software, insert the CD-ROM that came with your SMART Board interactive whiteboard and follow the on-screen instructions. If you don't have a CD-ROM, or if you're not sure whether your CD-ROM is for the latest version of SMART Board software, download the most up-to-date version of the software from <http://www.smarttech.com/support/software/>.
- 2 Shut down your computer.
- 3 Insert the USB cable's short DB9 connector into the 9-pin serial port under the lower right side of the SMART Board interactive whiteboard and tighten the screws.
- 4 Insert the USB connector (at the other end of the USB cable) into the USB port on your computer.
- 5 Turn on the computer. Verify the Ready Light on the right side of the SMART Pen Tray turns red to indicate that the interactive whiteboard is on. If this light fails to turn red, verify that all connections are made as indicated above.
- 6 The Ready Light on the pen tray will turn from red to green, indicating that the interactive whiteboard and the computer have established communication.

Orienting the SMART Board™ Interactive Whiteboard

You must orient the interactive whiteboard upon initial installation, or if your whiteboard or projector has been moved or jostled. Ensure the projector, computer and SMART Board software are running.

There are two ways to begin the orientation process:

- 1 Simultaneously press and hold the two SMART Pen Tray buttons.



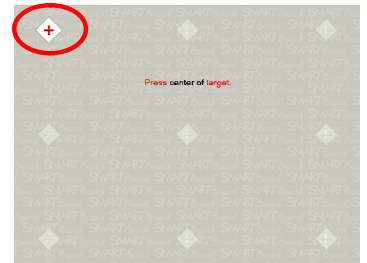
Pen Tray Buttons

or

Press the SMART Board Tools icon in the Microsoft® Windows® Notification Area, and select **Orient**.



Notification Area



Orientation Screen

- 2 Begin the orientation at the upper-left corner. Press your finger or pen squarely on the yellow center of each red cross in the order indicated by the white, diamond-shaped background.
- 3 If you're dissatisfied with the precision of a particular orientation point, simply press the left arrow key on the attached keyboard to redo a poorly aligned orientation point.

Changing Orientation Settings

You can increase the accuracy of your finger press for applications requiring greater precision.

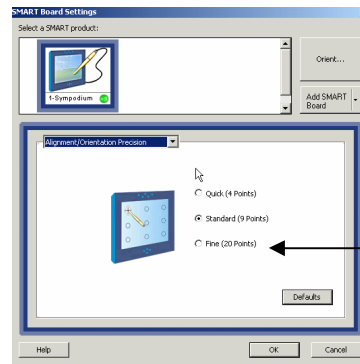
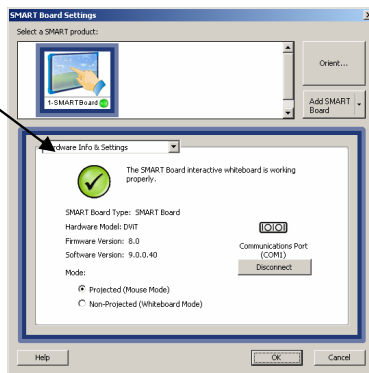
- 1 Press the SMART Board Tools icon in the Notification Area, and select **Control Panel**. Press the **SMART Board Settings** button.



SMART Board Settings Button

- 2 From the drop-down menu select **Alignment/Orientation Precision**.
- 3 Select **Fine (20 Points)** and press **OK**.

Drop-down menu



Select Fine (20 Points)

- 4 From the control panel, press the **Align/Orient the SMART Board** button to begin the orientation process. Press your finger or pen squarely on the yellow center of each red cross in the order indicated by the white, diamond-shaped background.