

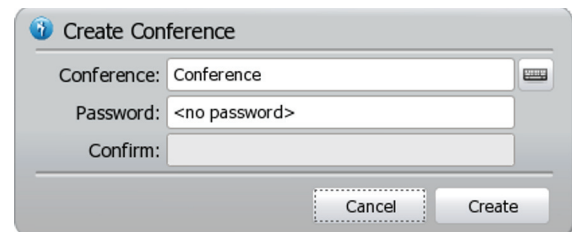
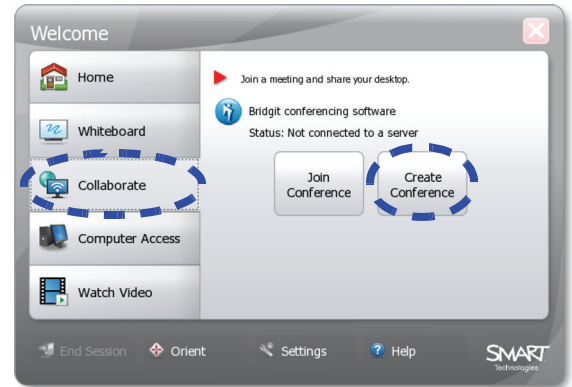
Collaborating with the SMART Hub SE 240

This *Quick Reference* provides an overview of the information you need to begin collaborating using the SMART Hub SE 240.

Starting your collaboration experience with the SMART Hub SE 240

- 1 Press **Collaborate** on the SMART Hub SE 240 Welcome Center
- 2 Press **Create Conference**. The *Create Conference* dialog box appears.
- 3 In the **Conference** box, type a name for the conference
- 4 In the **Password** and **Confirm** boxes, type a password for the conference

NOTE: Passwords are optional.
- 5 Press **Create**. The SMART collaboration client dialog box appears.
- 6 Press **Share This Display** to begin sharing your desktop



Joining a meeting using the SMART Hub SE 240

- 1 Press **Collaborate** on the SMART Hub SE 240 Welcome Center
- 2 Press **Join Conference**. The *Conference Connection* dialog box appears.
- 3 Select the SMART collaboration client software conference you want to join, and then press **Join**

NOTE: If the conference owner has assigned a password for the conference, a *Join Conference* dialog box appears. In the **Password** box, type the password and press **OK**.

