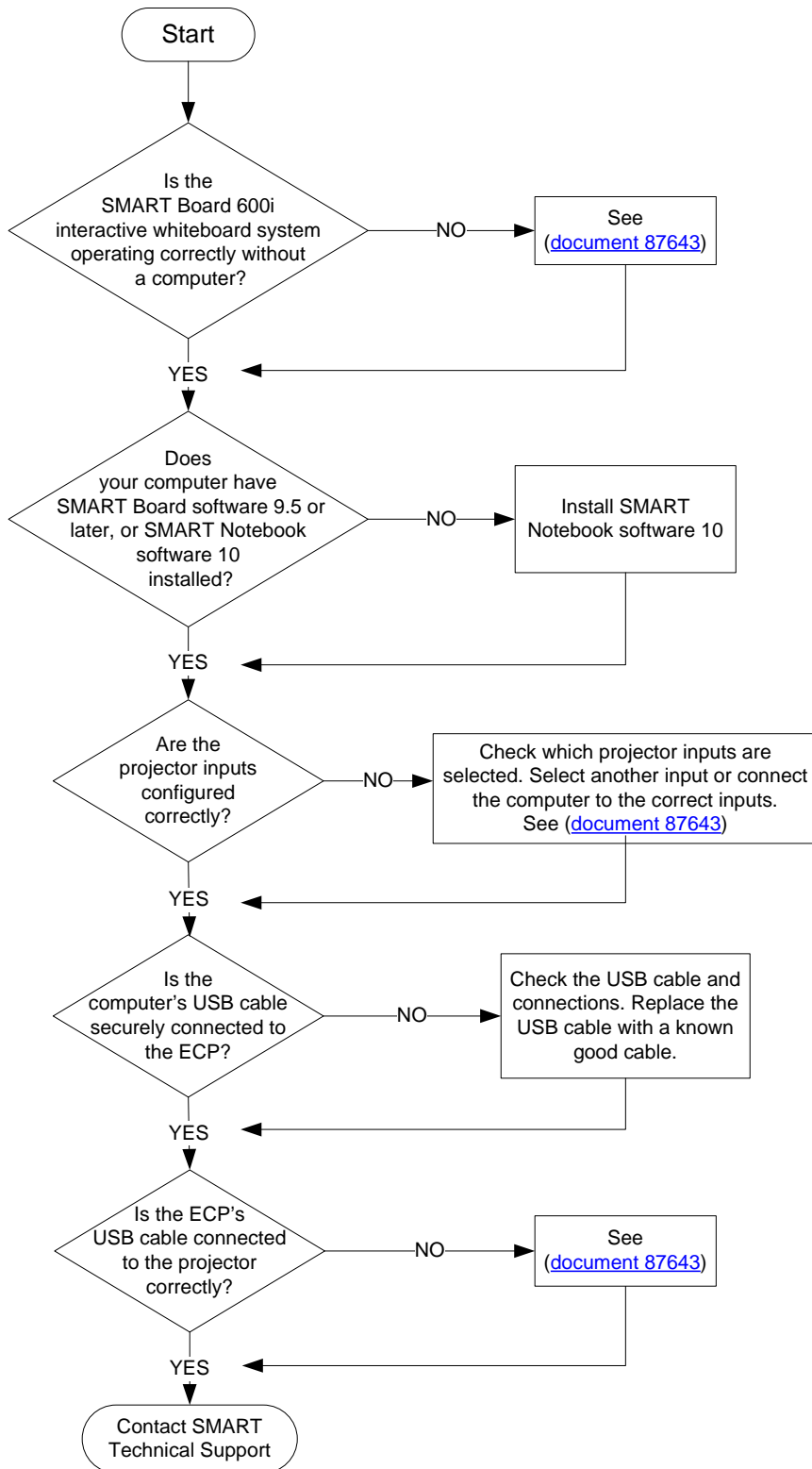


# Can you connect your computer to your SMART Board™ 600i interactive whiteboard system?



You can use your SMART Board 600i Series Interactive whiteboard system without a computer.

Refer to the installation and troubleshooting sections of the *SMART Board™ 600i Series Interactive Whiteboard System Installation and Configuration Guide* to verify its operation when a computer isn't connected.

Install and start SMART Notebook 10 software on your computer. You can download the software from SMART's website.

After installation, verify that the SMART Board software service is running. Check the status messages in the SMART Board software control panel. Refer to SMART Notebook software Help for details.

Refer to the *Configuring the 600i System Input Options* section of the *SMART Board™ 600i Series Interactive Whiteboard System Installation and Configuration Guide* to view or configure the input configuration.

**IMPORTANT** Do not use a USB cable longer than 6' (1.8 m) to connect your computer to the ECP. If you use a longer cable, its length, when combined with that of the extended connection panel cable, exceeds USB specifications, resulting in communication failure.

Refer to the *Installing 600i Series Interactive Whiteboard Systems* section of the *SMART Board™ 600i Series Interactive Whiteboard System Installation and Configuration Guide* to connect the ECP to the projector connection panel.