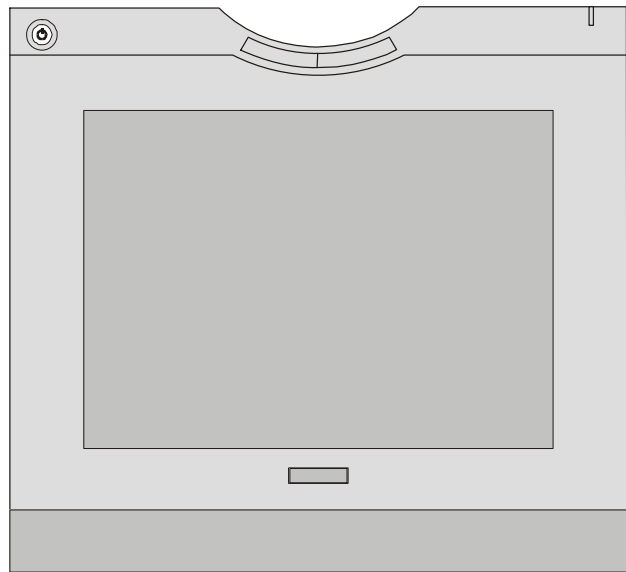


AirLiner™



Service Parts Diagrams

For Model:
WS100

Service Parts Diagrams Revision History

Revision 1 - June, 2005

- New document

Revision 2 - December, 2005

- Changed descriptions to match Service Parts Price List descriptions

Revision 3 - August, 2006

- Added new RoHS part numbers. For details, refer to Parts Diagram Change Request PD-00031

Revision 4 - November, 2006

- Added 45-00008-20

Revision 5 - January, 2007

- Change part number 43-01490-00 to 43-01490-20

Revision 6 - June, 2007

- Change description of battery

Revision 7 - February, 2009

- Add graphic for 30-00984
- Add graphic for 45-00008-20

Revision 8 - September, 2012

- Change 45-00008-20 to 52-00641-20

Standard Warranty Terms

Base product: Two-year limited equipment warranty

First Customer Ship: May, 2005

SMART Technologies

3636 Research Road NW
Calgary, AB T2L 1Y1
CANADA

Support +1.403.228.5940 or Toll Free 1.866.518.6791 (Canada/U.S.)

Support Fax +1.403.806.1256

www.smarttech.com/contactserviceparts www.smarttech.com



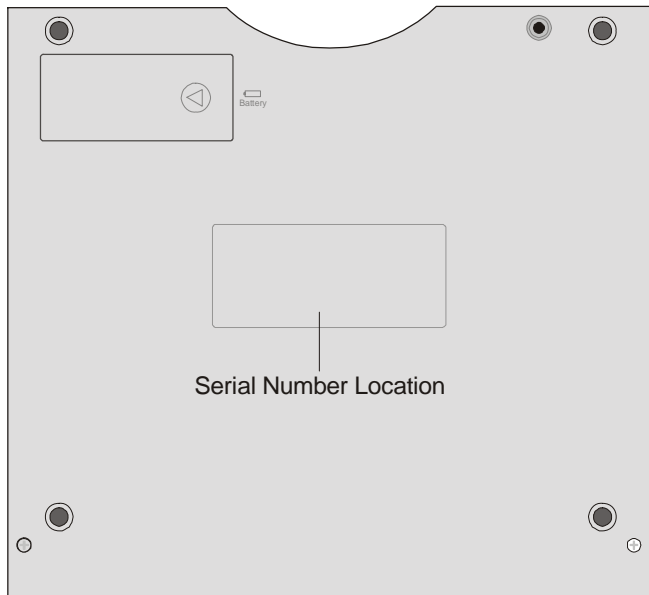
© 2012 SMART Technologies ULC. All rights reserved. SMART Board, smarttech and the SMART logo are trademarks or registered trademarks of SMART Technologies ULC in the U.S. and/or other countries. All other third-party product and company names are for identification purposes only and may be trademarks of their respective owners. Contents are subject to change without notice. 09/2012.

Service Parts Diagrams for the AirLiner Wireless Slate

Identifying Your Product Using the Serial Number 1
Ordering Parts 1
WS100 Parts 2

Identifying Your Product Using the Serial Number

To make sure that you have the correct service parts diagrams, you must verify the serial number of your AirLiner wireless slate. For model WS100, the serial number is located on the back of the slate, near the center. An example of the serial number format is shown below.



6FZ000001

Serial Number Example

Ordering Parts

Customers

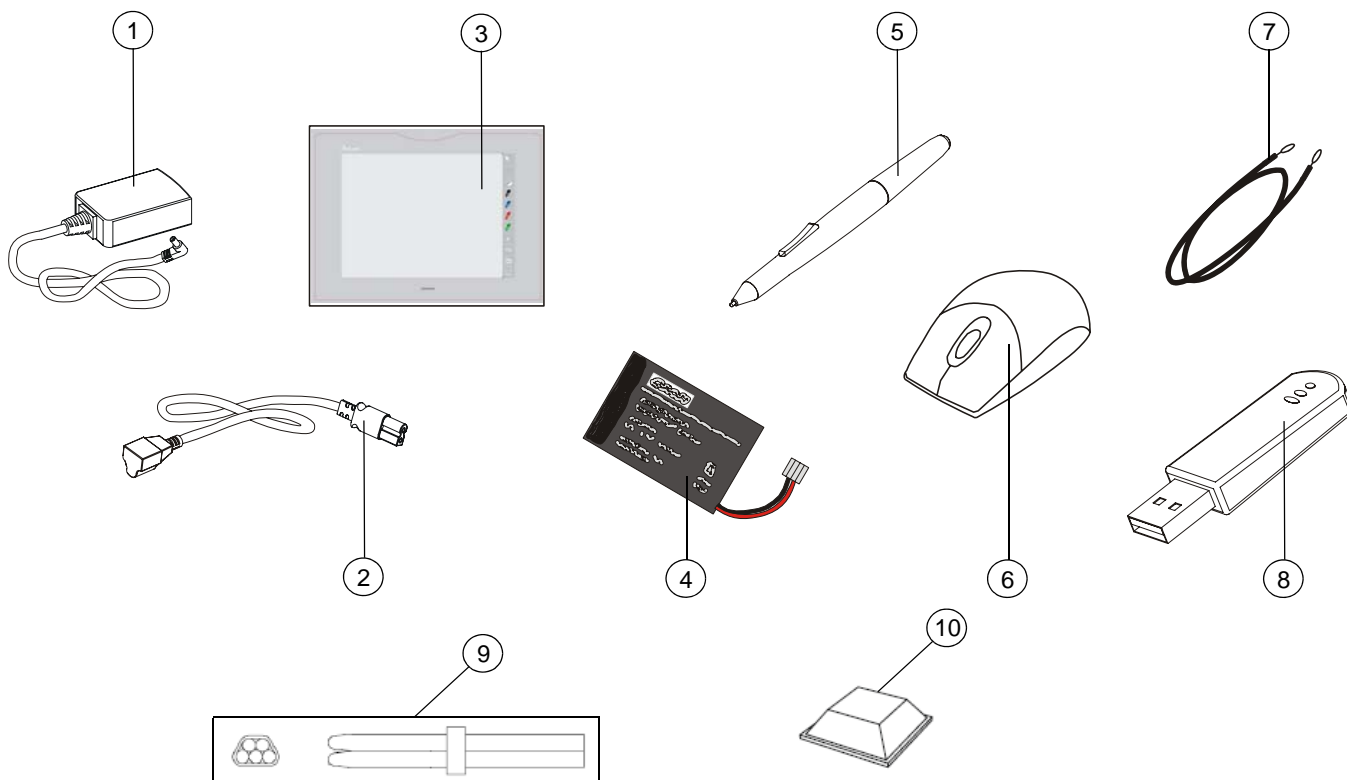
To order any of the parts in these service parts diagrams, contact your local reseller.
To find a reseller near you, visit www.smarttech.com/where.

Dealers and Distributors

For specific technical and pricing enquiries in regards to these diagrams please contact our service parts department.
Pricing is also available on-line via the SOURCE website (source.smarttech.com).

Web Form: www.smarttech.com/contactserviceparts
Phone: 1.888.42.SMART
International: +1.403.245.0333

WS100 Parts



Item	Part No.	Qty	Description
1	60-00030-20	1	Power supply, 6V DC, 1.0A, universal switching
2	93-00592-20	1	Cable, AC, North American, 6'7" (2 m)
2	93-00542-20	1	Cable, AC, Europe, 6'7" (2 m)
2	93-00543-20	1	Cable, AC, United Kingdom, 6'7" (2 m)
2	93-00576-20	1	Cable, AC, Australia, 6'7" (2 m)
3	43-01490-20	1	Underlay, with mouse and pen icons
4	01-00173	1	Battery, Lithium Ion, 3.7V, 1800 mA
5	45-00017-00	1	Pen, WS100
6	03-00078	1	Mouse, with scroll wheel
7	01-00149	1	Tether, pen, SSID250, SSID350, SSID370 and WS100
8	03-00077-20	1	Bluetooth wireless adapter
9	52-00641-20	1	Tip, pen, SSID250, SSID350, SSID370, WS100 and WS200, set of five
10	30-00984	1	Feet, adhesive, rubber, set of four
Not shown	52-00332-00	1	Overlay, clear plastic