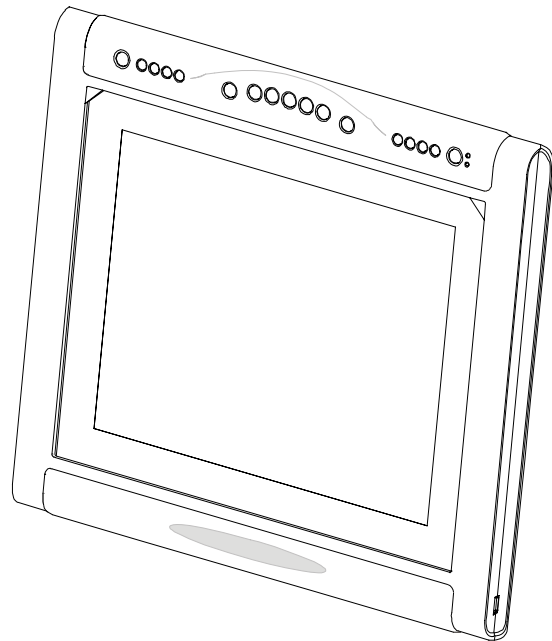


SMART™



Service Parts Diagrams

**For Model:
SSDT770**

Service Parts Diagrams Revision History

Revision 1 - September, 2005

- New document

Revision 2 - September, 2006

- Added new RoHS part numbers. For details refer to Parts Diagram Change Request PD-0030

Revision 3 - November, 2006

- Change part numbers for stand and video cable

Revision 4 - July, 2007

- Add reference to R2 serial number

Revision 5 - February, 2009

- Change 93-053 to 93-00654-20

Revision 6 - August, 2009

- Change Sympodium to SMART Podium

Revision 7 - April, 2012

- Change 93-00507-00 to 93-00828-20

Standard Warranty Terms

Base product: Two-year limited equipment warranty

First Customer Ship: September, 2005

SMART Technologies

3636 Research Road NW

Calgary, AB T2L 1Y1

CANADA

Support +1.403.228.5940 or Toll Free 1.866.518.6791 (Canada/U.S.)

Support Fax +1.403.806.1256

www.smarttech.com/contactserviceparts www.smarttech.com



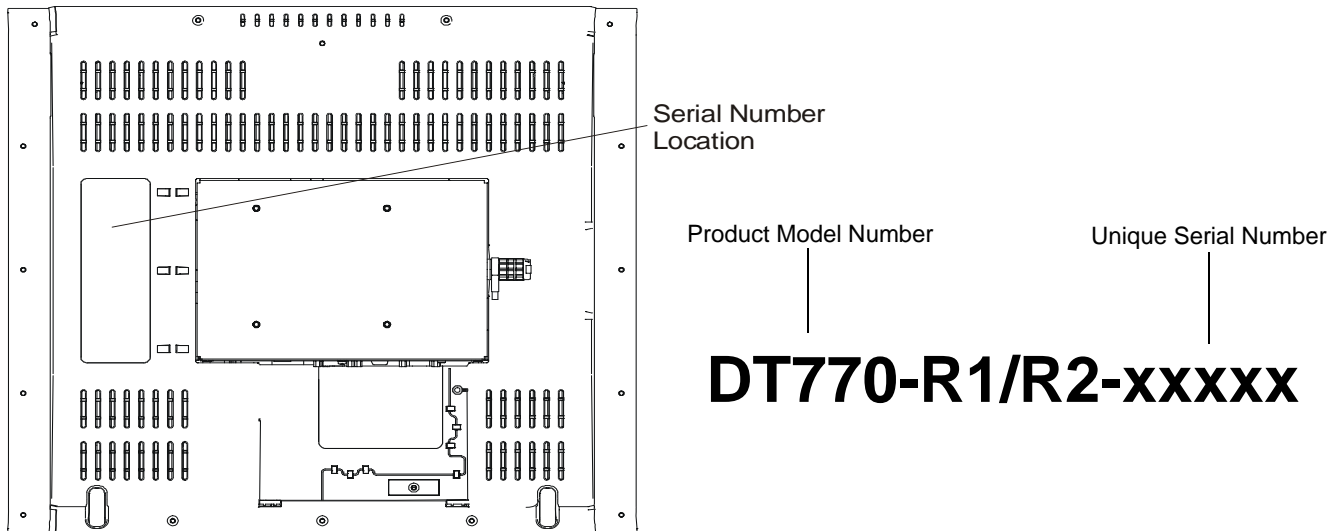
© 2012 SMART Technologies ULC. All rights reserved. SMART Board, smarttech and the SMART logo are trademarks or registered trademarks of SMART Technologies ULC in the U.S. and/or other countries. All other third-party product and company names are for identification purposes only and may be trademarks of their respective owners. Contents are subject to change without notice. 04/2012.

Service Parts Diagrams for the SMART Podium SSDT770 Interactive Pen Display

Identifying Your Product Using the Serial Number 1
Ordering Parts 1
SSDT770 Parts 2

Identifying Your Product Using the Serial Number

To make sure that you have the correct service parts diagrams, you must verify the serial number of your SMART Podium interactive pen display. The serial number for mode SSDT770 is located on the information label on the back of the interactive pen display. An example of the serial number format is shown below.



Ordering Parts

Customers

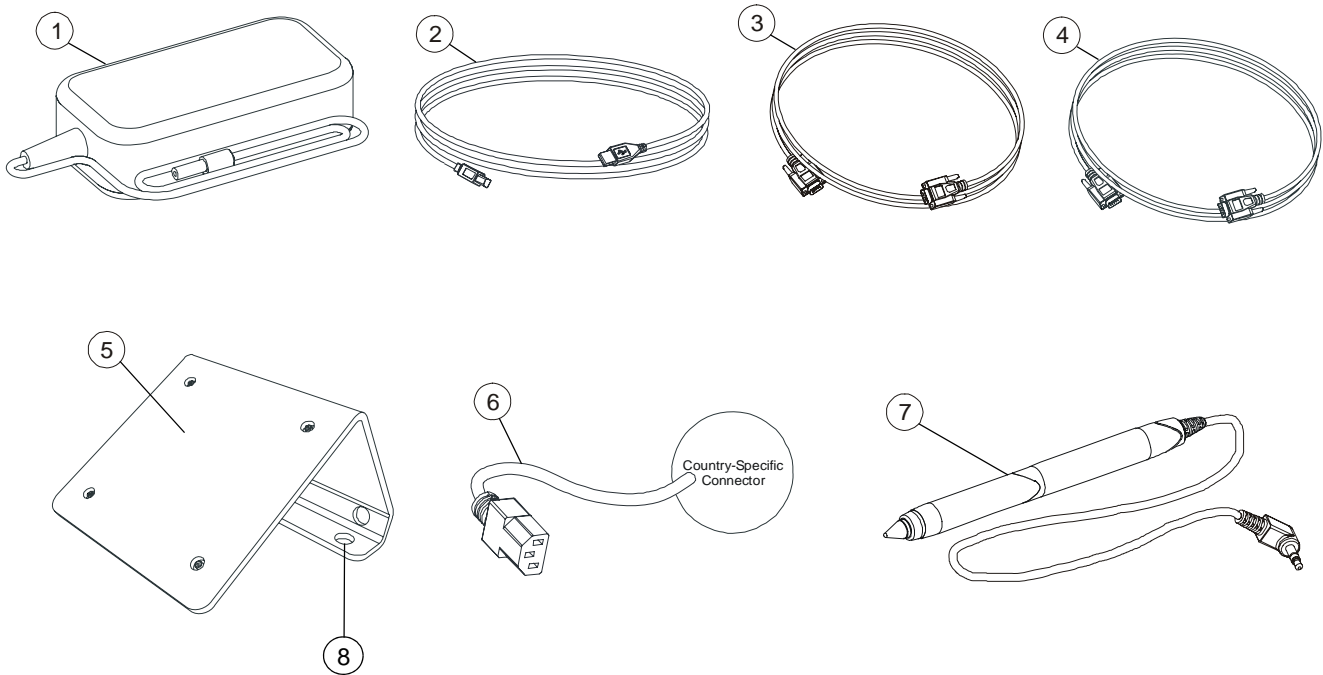
To order any of the parts in these service parts diagrams, contact your local reseller. To find a reseller near you, visit www.smarttech.com/where.

Dealers and Distributors

For specific technical and pricing enquiries in regards to these diagrams please contact our service parts department. Pricing is also available on-line via the SOURCE website (source.smarttech.com).

Web Form: www.smarttech.com/contactserviceparts
Phone: 1.888.42.SMART
International: +1.403.245.0333

SSDT770 Parts



Item	Part No.	Qty	Description
1	60-00027-20	1	Power supply, 12V DC, 5.0A, universal switching
2	93-00828-20	1	Cable, USB, A-B, 16' (5.0 m)
3	93-00027-20	1	Cable, serial, DB9 male to DB9 female, 6' (1.8 m)
4	93-00315-20	1	Cable, video, HD15 male to HD15 male, 6' (1.8 m)
5	51-00516-00	1	Stand, SSDT770 NOTE: To be ordered with part number 30-00977.
6	93-051	1	Cable, power, North America, 8' (2.4 m)
6	93-000654-20	1	Cable, power, Japan, 8' (2.4 m)
6	93-054	1	Cable, power, Europe, 8' (2.4 m)
6	93-055	1	Cable, power, United Kingdom, 8' (2.4 m)
6	93-056	1	Cable, power, Australia, 8' (2.4 m)
6	93-063	1	Cable, power, South Africa, 8' (2.4 m)
7	20-00571-20	1	Pen, SSDT770
8	30-00977	4	Bumper, rubber NOTE: To be ordered with part number 51-00516-00.