

Getting started

SMART kapp iQ Pro

SMART kapp iQ Pro™ combines SMART kapp iQ's simple yet powerful whiteboard experience with the advanced collaboration capabilities of SMART Meeting Pro® software to provide a solution that adapts seamlessly to suit any meeting. This guide provides information for installing the SMART kapp iQ Pro hardware and getting started with the SMART kapp iQ board and SMART Meeting Pro software.

Installing

A number of resources are available to help you install the SMART kapp iQ Pro 55, 65 or 75 and SMART Meeting Pro software.

Installation guides

smarttech.com/kb/170836 (SMART kapp iQ Pro 55 and 65)

smarttech.com/kb/170996 (SMART kapp iQ Pro 75)

The textless installation guides provide step-by-step instructions for installing the SMART kapp iQ Pro interactive flat panel. You can also watch the SMART kapp iQ Pro installation video for instructions (youtu.be/Oy22vE0dm80).

Administrator's guide

smarttech.com/kb/171000

The administrator's guide provides the following information:

- Mounting the interactive flat panel
- Connecting power and devices
- Setting up the interactive flat panel and room computer for the first time
- Maintaining and troubleshooting the interactive flat panel

SMART Meeting Pro administrator's guide

smarttech.com/kb/170518

The SMART Meeting Pro administrator's guide provides the following information about the SMART Meeting Pro software:

- Customizing
- Deploying
- Configuring
- Updating
- Uninstalling

Using SMART kapp iQ Pro

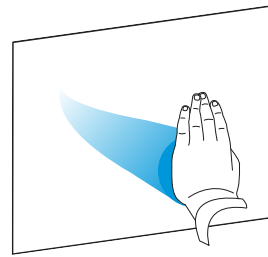
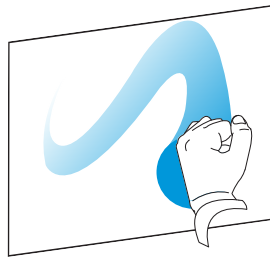
SMART kapp iQ Pro has two main display modes: SMART kapp iQ and SMART Meeting Pro. SMART kapp iQ is the default display mode, and you can use the input button on the front of the interactive flat panel to quickly switch to SMART Meeting Pro. The following section includes information for getting started and resources for more details about using each display mode's features.

Using SMART kapp iQ

Getting started with SMART kapp iQ is simple: Just pick up one of the provided pens and start writing on the interactive flat panel. Beyond its simple walk-up-and-use capability, SMART kapp iQ also provides some powerful collaboration features.

Write and erase

You can write and erase notes on the SMART kapp iQ Pro interactive flat panel just like you do on a traditional dry erase board. Pick up the provided red or black pen and use it to write on the interactive flat panel. To erase, use the eraser on the back of the pen or one of the following gestures:




Connect and start a session

Connect your mobile device to the interactive flat panel to start a session. After you've started a session you can:

- Save snapshots of your work
- Share your saved snapshots as PDFs or JPEG files
- Invite others to join your shared session and contribute to your work



To connect to your SMART kapp iQ Pro interactive flat panel and take full advantage of these SMART kapp features, download the SMART kapp app. To download the app, visit the Apple App Store or Google Play on your mobile device and search for **SMART kapp**.


Save

As you write notes on the SMART kapp iQ Pro interactive flat panel, you might want to save snapshots of your notes from time to time during your session. To save snapshots of your notes, connect to the interactive flat panel and then press **Capture**  on the screen or in the app.

Share

Use the app to share snapshots that you saved in your current or previous sessions. If you want to share snapshots of your notes, you can use the app to export and share the snapshots as PDFs or JPEG files. To share a snapshot, follow these steps:

1. View the snapshot you want to export.
2. On an Apple mobile device, tap **Export** , and then select **Save to Camera Roll** or **Share as PDF**.
OR
On an Android mobile device, tap **Menu** , and then select **Share as Image** or **Share as PDF**.
3. If you selected **Share as Image** or **Share as PDF**, select the method you want to use to share the snapshot.


Invite	<p>During a session, you can use the SMART kapp app to invite up to 250 people to view your notes on their mobile or desktop devices.</p> <p>To invite others to join your session, follow these steps:</p> <ol style="list-style-type: none">1. Connect your mobile device to the board.2. Tap Invite , and then select Send Link.3. Select the app you want to use to send the invitation.4. Use the selected app to send the invitation.
Multi-way inking	<p>When others connect to your shared session, they can use their own devices to add content to the session. If they have their own SMART kapp iQ or SMART kapp iQ Pro, they can also connect to the session and view and interact with the session. Any notes or drawings that remote participants make will automatically appear on your SMART kapp iQ Pro.</p> <p>See the <i>SMART kapp iQ user's guide</i> (smarttech.com/kb/170812) for more information about multi-way inking and working as a remote participant.</p>
Continue where you left off	<p>Use the app to continue from where you left off in a previous SMART kapp session. It doesn't matter if your previous session was on a SMART kapp 42 or 84 board or another SMART kapp iQ board.</p>
More information	<p>See the <i>SMART kapp iQ user's guide</i> (smarttech.com/kb/170812) for more information on how to use SMART kapp iQ.</p>

Using SMART Meeting Pro


SMART Meeting Pro software is an easy-to-use whiteboard application that enhances your meeting productivity and collaboration. Use SMART Meeting Pro to enrich brainstorming sessions, meetings and presentations. The following section shows you how to work with SMART Meeting Pro.

Switch display modes

Switch display modes to access SMART Meeting Pro's collaboration features. Follow these steps:

1. On the front of the SMART kapp iQ Pro interactive flat panel, press  and select **HDMI1**.
The log on screen appears.

NOTE

To return to SMART kapp iQ, press  and select **OPS/HDMI**.

2. Enter your log on credentials.

Your Windows desktop appears with the SMART Meeting Pro toolbar.

Use the pen tools

Similar to SMART kapp iQ, you can pick up one of the provided pens and draw on the interactive flat panel. However, in SMART Meeting Pro, you have access to the SMART Ink™ dynamic toolbar. This toolbar lets you change the properties of the pen while you're in SMART Meeting Pro mode. You can change:

- Pen type
 - Color
 - Line style
 - Line start
 - Line end
 - Thickness
 - Transparency
-

NOTE

The available properties depend on the pen type that you select.

To open the dynamic toolbar for one of the pens, just pick up one of the pens and the dynamic toolbar will appear. When you first open the dynamic toolbar, it appears minimized. To view the toolbar in full mode, press it.



Minimized dynamic toolbar

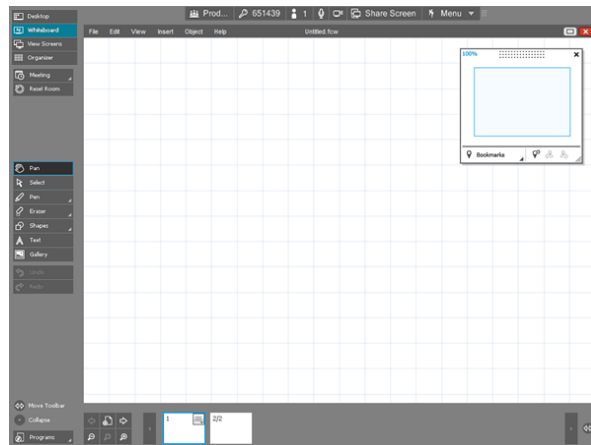


Expanded dynamic toolbar

For more information, see the *SMART Meeting Pro software user's guide* (smarttech.com/kb/170897) or SMART Meeting Pro Help (bit.ly/meetprohelp4_1).

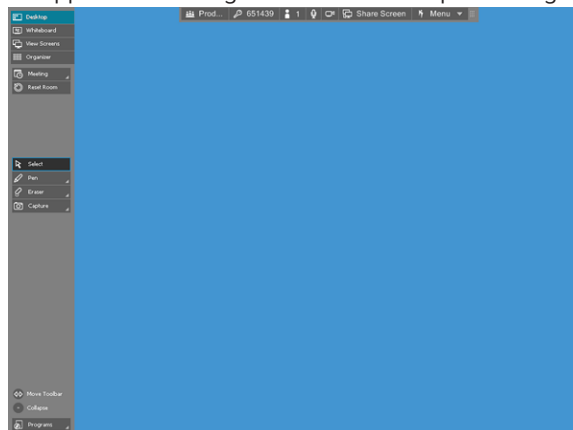
Use the whiteboard

Use Whiteboard mode to create presentations and compile information for meetings. You can write notes and draw objects, manipulate text and images and work with information you captured from other applications. When you're done, you can present your file or email your file to meeting participants.



Use the desktop

Use Desktop mode to interact with the room computer's applications. You can write or draw digital ink over computer applications using SMART Ink™ while presenting content to others.



More information

See the *SMART Meeting Pro software user's guide* (smarttech.com/kb/170897) or visit SMART Meeting Pro Help (bit.ly/meetprohelp4_1) for more detailed information about using SMART Meeting Pro software.

Other resources

Support page	<ul style="list-style-type: none">• support.smarttech.com/hardware/kapp
User's guides and online help	<ul style="list-style-type: none">• SMART kapp iQ user's guide (smarttech.com/kb/170812)• SMART Meeting Pro software user's guide (smarttech.com/kb/170897)• SMART Meeting Pro software Help (bit.ly/meetprohelp4_1)
FAQs and quick reference guides	<ul style="list-style-type: none">• SMART kapp iQ FAQs (smarttech.com/kb/170954)• SMART kapp iQ security information (smarttech.com/kb/170956)• SMART Meeting Pro quick reference (smarttech.com/kb/170976)
Training	<ul style="list-style-type: none">• Technical training (onlinehelp.smarttech.com/english/training/technical/kappiqpro)• Training for SMART visual collaboration solutions (bit.ly/training4businessSMART)
Installation and administration guides	<ul style="list-style-type: none">• SMART kapp iQ Pro 55 and 65 installation instructions (smarttech.com/kb/170836)• SMART kapp iQ Pro 75 installation instructions (smarttech.com/kb/170996)• SMART Meeting Pro software system administrator's guide (smarttech.com/kb/170518)
Troubleshooting	<ul style="list-style-type: none">• Knowledge base and communities (community.smarttech.com)• SMART kapp iQ troubleshooting guide (bit.ly/kappiQtrouble)
Specifications	<ul style="list-style-type: none">• SMART kapp iQ Pro 55 specifications (smarttech.com/kb/170994)• SMART kapp iQ Pro 65 specifications (smarttech.com/kb/170995)• SMART kapp iQ Pro 75 specifications (smarttech.com/kb/170997)• SMART Meeting Pro 4 release notes (smarttech.com/kb/170982)