

## Specifications

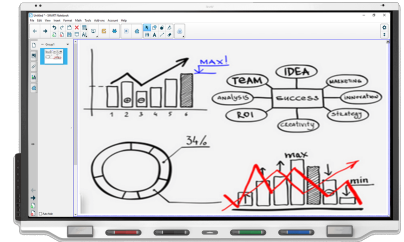
# SMART Board® 7075R interactive display

Model SBID-7075R

## Overview

The SMART Board® 7075R interactive display with SMART Learning Suite helps you engage students and achieve better outcomes.

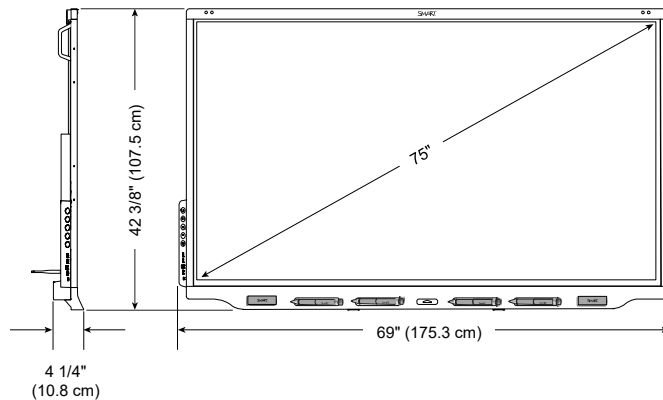
The 4K ultra-high-definition LED display provides optimal image clarity and wide viewing angles. The display's HyPr Touch™ with EMR technology provides industry-leading touch and digital ink performance. You can interact with applications through touch, write or draw over any application with the four pens, and erase with your palm or the two erasers—all without switching tools or modes. With the new True Palm Rejection feature, you can even rest your palm on the screen while writing or drawing. The Pen ID™ feature allows you to assign different appearances to the pens, and multiple users can write or draw at the same time.



See [smarttech.com](https://smarttech.com) for more information.

## Dimensions and weights<sup>1</sup>

### Dimensions



### Weight

128 lb. (58 kg)

### Shipping dimensions (including pallet)<sup>2</sup>

76" × 47 3/4" × 11"  
(193 cm × 121.2 cm × 28 cm)

### Shipping weight

170 lb. (77 kg)



As an ENERGY STAR® certified signage display, the SMART Board 7075R interactive display meets strict energy efficiency guidelines set by the U.S. Environmental Protection Agency and Department of Energy.

<sup>1</sup>All dimensions ± 1/8" (0.3 cm). All weights ± 2 lb. (0.9 kg).

<sup>2</sup>Product ships upright.

## Highlights

<b>HyPr Touch with EMR</b>	Electromagnetic resonance (EMR) technology provides industry-leading performance with absolutely zero contact detect height and support for over 1,000 levels of pressure by the pens, resulting in an intuitive, pen-on-paper feel
<b>True Palm Rejection</b>	Palms, wrists, hands, and other objects are ignored while users write or draw so that they can focus on collaboration instead of how they hold the pens
<b>USB Type-C input</b>	Support for modern devices, with a single connection for touch, video, and audio
<b>Ambient light sensor</b>	Screen automatically dims or brightens, ensuring comfort when viewing content in any lighting condition

## Hardware

### Interaction

Touch technology	HyPr Touch with EMR
Multitouch capabilities	Up to 20 finger touch points, four pen touch points and two eraser touch points <sup>3</sup>
Object Awareness™	Behavior adjusts automatically to the tool or object you're using, whether it's a pen, finger, eraser, or palm
Simultaneous Tool Differentiation	Multiple users can touch the display and use pens and erasers at the same time for a natural, fully collaborative experience
Pen ID	Four people can write independently and simultaneously, using different colored ink
Silktouch™	Ultra-smooth finish that allows you to use the display for hours without finger burn
True Palm Rejection	Palms, wrists, hands, and other objects are ignored while users write or draw
Pressure sensitivity	Detection of over 1,000 levels of pressure by the pens

### Display

Type	LCD with LED back light
Aspect ratio	16:9
Optimal resolution (HDMI inputs)	4K UHD (3840 × 2160) at 60 Hz
Horizontal frequency (typical)	135 kHz
Vertical frequency (typical)	60 Hz
Brightness (maximum)	350 cd/m <sup>2</sup>
Pixel dimensions	0.4935 mm × 0.4935 mm

<sup>3</sup>Only up to 10 touch points and no pen or eraser support on Chrome OS™ operating system.

Viewing angle	178°
Response time (typical)	8 ms
<b>1000BASE-T Ethernet</b>	Two external ports for a Gigabit Ethernet switched network connecting the interactive display and the OPS module to an external network and an external device, such as a computer
<b>Wireless</b>	Wi-Fi and Bluetooth® disabled on initial setup and cannot be reenabled
<b>Sensors</b>	2 Proximity 1 Ambient light 1 IR (for remote control)
<b>Audio</b>	Two 15 W integrated speakers
<b>Noise level</b>	<38 dBA
<b>Included cables and accessories</b>	1 Country-specific power cable 1 USB 2.0 cable 4 Pens 2 Erasers 1 Remote control 1 WM-SBID-200 wall mount
<b>Mounting holes</b>	For a standard VESA 800 mm × 400 mm mounting plate Lower mounting holes 17 7/8" (45.2 cm) from the bottom of the interactive display
<b>Mounting bracket depth</b>	Minimum depth of 2" (5.1 cm) for all components on the back of the interactive display for airflow
<b>Software</b>	
<b>Included software</b>	One-year subscription to SMART Learning Suite (including SMART Notebook software) SMART Notebook basic version Subscription to SMART Remote Management for length of SMART Assure warranty term SMART Ink and SMART Product Drivers
<b>Connectors</b>	
<b>Convenience panel</b>	2 USB 3.0 Type-A (for media) 1 USB 3.0 Type-B (for touch) 1 USB Type-C 1 HDMI® 2.0 in with HDCP 1.4 and HDCP 2.2 support



**SMART BOARD 7075R INTERACTIVE DISPLAY – MODEL SBID-7075R**

<b>Connector panel</b>	1	Accessory slot (for OPS devices, such as the optional SMART PCM8 OPS PC)
	3	USB 3.0 Type-A (for media)
	1	USB 2.0 Type-A (for service use only)
	2	USB 3.0 Type-B (for touch)
	3	HDMI 2.0 in with HDCP 1.4 and HDCP 2.2 support
	1	HDMI 2.0 out
	1	VGA in
	1	Stereo 3.5 mm in
	1	Stereo 3.5 mm out
	1	S/PDIF out
	2	RJ45
	1	RS-232 in
	1	RS-232 out
	<hr/>	
<b>Back of display</b>	1	AC power in
	1	AC power out

## Installation requirements

<b>Interactive display</b>	See the <i>SMART Board 7000R and 7000R Pro series interactive displays installation and maintenance guide</i> ( <a href="http://smarttech.com/kb/171538">smarttech.com/kb/171538</a> )
----------------------------	--

---

### Room computers and guest laptops

General requirements	See <a href="#">SMART Notebook software release notes</a>
4K UHD	Video card that can support 3840 × 2160 resolution at 60 Hz See <a href="#">Minimum requirements for Ultra High Definition or 4K on your interactive flat panel</a>

---

### Mini-computers

General requirements	See <a href="#">SMART Notebook software release notes</a>
Dimensions	Smaller than 10" × 10" × 2" (25.4 cm × 25.4 cm × 5.1 cm)
Weight	Less than 10 lb. (4.5 kg)
Mounting	VESA 75 mm × 75 mm or 100 mm × 100 mm mounting pattern

## Cable requirements

<b>HDMI</b>	Maximum length: 23' (7 m)
-------------	---------------------------

---

### NOTES

- Use only certified HDMI cables that have been tested to support the performance standard you require.
  - The performance of cables longer than 23' (7 m) is highly dependent on the cable's quality.
-

**USB 2.0** USB 2.0 certified  
Hi-Speed (480 Mbps) support  
Maximum length: 16' (5 m)

**USB 3.0** USB 3.0 certified  
SuperSpeed (5 Gbps) support  
Maximum length: 9' (3 m)

**NOTES**

- SMART supports only installations that use directly connected video and USB cables, AC-powered extenders, or USB extenders purchased from SMART.
- You might be able to use higher-grade cables that are longer than specified. If you have problems with such a cable or an extender of any type, test the connection with a shorter cable before contacting SMART Support.

**USB Type-C** USB 3.1 certified  
SuperSpeed (5 Gbps) support  
Maximum length: 6' (2 m)

**NOTES**

- To use a USB Type-C cable for video, you need:
  - A cable that supports USB 3.1 (Gen 1 or Gen 2)
  - A computer that supports Display Port Alternate Mode
- Passive USB Type-C cables are sufficient for 60 W charging.
- You might be able to use higher-grade cables that are longer than specified. If you have problems with such a cable or an extender of any type, test the connection with a shorter cable before contacting SMART Support.

**Important** Using cables that exceed these maximum lengths can produce unexpected results, such as degraded picture quality or USB connectivity. Refer to *Installation best practices for SMART products* ([smarttech.com/kb/171035](http://smarttech.com/kb/171035)) for comprehensive information about cables and extensions for SMART hardware products.

## Storage and operating requirements

**Power requirements** 100V to 240V AC, 50 Hz to 60 Hz

**Power consumption at 77°F (25°C)**

Standby mode <0.5 W

Normal operating 135 W

**Operating temperature** 41–95°F (5–35°C)

**Storage temperature** -4–140°F (-20–60°C)

**Humidity** 5–80% relative humidity, non-condensing

## Regulatory certifications (Model ID: IDR775-1)

<b>U.S. / Canada</b>	UL, FCC, IC, CONEG Packaging, Proposition 65, Conflict Minerals, ENERGY STAR
<b>EU / EEA / EFTA</b>	CE, RoHS, REACH, Battery, Packaging, POPs, WEEE
<b>Australia / New Zealand</b>	RCM

## Purchasing information

### Order number

SBID-7075R SMART Board 7075R interactive display with SMART Learning Suite

**Optional accessories** See [smarttech.com/accessories](http://smarttech.com/accessories)

## Warranty information

**SMART Assure warranty** Includes advanced hardware replacement and access to onsite support. Terms and conditions vary by region. Contact your local reseller or distributor for information and visit [smarttech.com/warranty](http://smarttech.com/warranty).

---

[smarttech.com/support](http://smarttech.com/support)  
[smarttech.com/contactsupport](http://smarttech.com/contactsupport)

© 2019 SMART Technologies ULC. All rights reserved. SMART Board, SMART Notebook, Pen ID, HyPr Touch, Object Awareness, Silktouch, smarttech, the SMART logo and all SMART taglines are trademarks or registered trademarks of SMART Technologies ULC in the U.S. and/or other countries. The Bluetooth word mark is owned by the Bluetooth SIG, Inc. and any use of such marks by SMART Technologies ULC is under license. The Adopted Trademarks HDMI, HDMI High-Definition Multimedia Interface, and the HDMI Logo are trademarks or registered trademarks of HDMI Licensing Administrator, Inc. in the United States and other countries. All other third-party product and company names may be trademarks of their respective owners. This product and/or use thereof is covered by one or more of the following U.S. patents: [www.smarttech.com/patents](http://www.smarttech.com/patents). Contents are subject to change without notice. November 26, 2019.