

SMART Board® E70

Interactive flat panel

User's guide

SMART®

Product registration

If you register your SMART product, we'll notify you of new features and software upgrades.

Register online at smarttech.com/registration.

Keep the following information available in case you need to contact SMART Support.

Serial number:

Date of purchase:

FCC warning

This equipment has been tested and found to comply with the limits for a Class A digital device, pursuant to Part 15 of the FCC Rules. These limits are designed to provide reasonable protection against harmful interference when the equipment is operated in a commercial environment. This equipment generates, uses and can radiate radio frequency energy and, if not installed and used in accordance with the manufacturer's instructions, may cause harmful interference to radio communications. Operation of this equipment in a residential area is likely to cause harmful interference in which case the user will be required to correct the interference at his own expense.

Trademark notice

SMART Board, SMART Notebook, smarttech, the SMART logo and all SMART taglines are trademarks or registered trademarks of SMART Technologies ULC in the U.S. and/or other countries. Windows is either a registered trademark or a trademark of Microsoft Corporation in the U.S. and/or other countries. All other third-party product and company names may be trademarks of their respective owners.

Copyright notice

© 2013 SMART Technologies ULC. All rights reserved. No part of this publication may be reproduced, transmitted, transcribed, stored in a retrieval system or translated into any language in any form by any means without the prior written consent of SMART Technologies ULC. Information in this manual is subject to change without notice and does not represent a commitment on the part of SMART.

This product and/or use thereof covered by one or more of the following U.S. patents.

www.smarttech.com/patents

08/2013

Important information

WARNING

- Failure to follow the installation instructions shipped with your SMART product could result in personal injury and product damage which may not be covered by your warranty.
- Do not open or disassemble the SMART product. You risk electrical shock from the high voltage inside the casing. Opening the casing also voids your warranty.
- Do not stand (or allow children to stand) on a chair to touch the surface of your SMART product. Rather, mount the product at the appropriate height.
- To reduce the risk of fire or electric shock, do not expose your SMART product to rain or moisture.
- If your SMART product requires replacement parts, make sure the service technician uses replacement parts specified by SMART Technologies or parts with the same characteristics as the original.
- Ensure that any cables extending across the floor to your SMART product are properly bundled and marked to avoid a trip hazard.
- Use only extension cords and outlets into which this product's polarized plug can be fully inserted.
- Use the power cable provided with this product. If a power cable is not supplied with this product, please contact your supplier. Use only power cables that match the AC voltage of the power outlet and that comply with your country's safety standards.
- If the glass is broken, do not touch the liquid crystal. To prevent injury, handle glass fragments with care when disposing of them.
- Use only VESA®-approved mounting hardware.
- Do not insert objects inside the cabinet ventilation holes, because they could touch dangerous voltage points and cause electric shock, fire or product damage which may not be covered by your warranty.
- Do not place any heavy objects on the power cable. Damage to the cable could cause shock, fire or product damage which may not be covered by your warranty.

IMPORTANT INFORMATION

- Disconnect all power cables for your interactive flat panel from the wall outlet and seek assistance from qualified service personnel when any of the following occurs:
 - The power cable or plug is damaged
 - Liquid is spilled into the interactive flat panel
 - Objects fall into the interactive flat panel
 - The interactive flat panel is dropped
 - Structural damage such as cracking occurs
 - The interactive flat panel behaves unexpectedly when you follow operating instructions

Contents

Important information	i
Chapter 1: About your interactive flat panel	1
Feature highlights	1
Included accessories	2
Chapter 2: Installing your interactive flat panel	3
Choosing a mounting location	4
Choosing a mounting height	4
Cable management	4
Connecting your interactive flat panel	5
Configuring your computer's screen resolution	6
Chapter 3: Using your interactive flat panel	9
Using the remote control	9
Menu control panel	12
On-screen display menu	13
Multi Media mode	14
Chapter 4: Troubleshooting your interactive flat panel	17
Locating the serial number	17
Resolving common touch control and resolution issues with Windows and Mac operating systems	18
Resolving image issues	21
Configuring and calibrating your SMART Board E70 interactive flat panel with Windows ..	22
Configuring your touch and display settings for the SMART Board E70	22
Calibrating your SMART Board E70 interactive flat panel with Mac OS X	28
Calibrating your SMART Board E70	28
SMART E70 multiple displays setup Mac	29
Appendix A: Hardware environmental compliance	31
Waste Electrical and Electronic Equipment and Battery regulations (WEEE and Battery Directives)	31
Batteries	31
More information	31
Index	33

Chapter 1

About your interactive flat panel

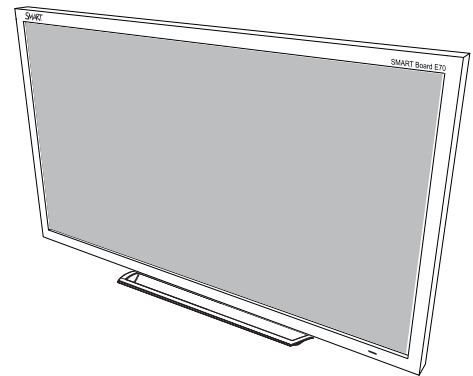
Feature highlights	1
Included accessories	2
Pen and pen tray	2
Remote control	2
Included cables	2

This chapter describes the features of your SMART Board® E70 interactive flat panel and provides information about product parts and accessories.

Feature highlights

Designed specifically for classrooms, the SMART Board E70 interactive flat panel combines a premium touch experience with the power of SMART Notebook™ collaborative learning software on a 70" display.

The high-definition, shadow-free 70" (177.8 cm) LED display features low friction coated glass that enables fingers to glide smoothly over the surface, facilitating a natural touch experience. The interactive flat panel also virtually eliminates glare and provides an optimal view from any angle in the classroom, delivering an unparalleled viewing and writing experience to offer the best value for classrooms. The multitouch interactive flat panel features freestyle multi-user interaction anywhere on the display with Windows® 7 or Windows 8 operating systems, enabling students to collaborate without limitations.



CHAPTER 1

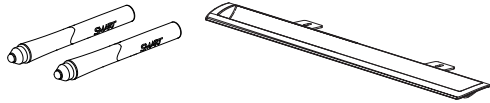
About your interactive flat panel

Included accessories

The following accessories are included with your interactive flat panel.

Pen and pen tray

Two pens are included with your interactive flat panel.



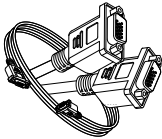
Remote control

The remote control enables you to access the on-screen menus and to change the display and input settings.



Included cables

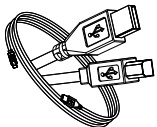
VGA - RGB video input



Power cable - NA, UK and EU



USB cable - touch interface



Chapter 2

Installing your interactive flat panel

Choosing a mounting location	4
Choosing a mounting height	4
Cable management	4
Connecting your interactive flat panel	5
Configuring your computer's screen resolution	6
Recommended computer screen resolution	6
Windows 7 and Windows 8 operating systems	7
Mac OS operating system software	7

WARNING

The weight of the interactive flat panel is 169.8 lb. (77 kg), refer to your local building code to ensure the wall and the mount being used can support this installation. Use appropriating hardware in accordance to building code and always use 3 or more people to lift and install E70 interactive flat panel.

This chapter provides additional considerations and details for installing your interactive flat panel.

CHAPTER 2

Installing your interactive flat panel

Choosing a mounting location

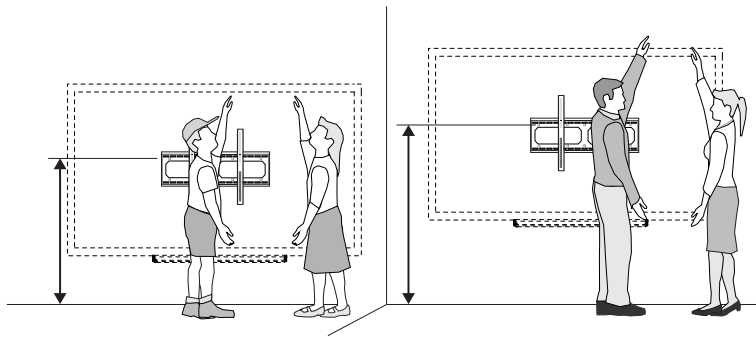
Consider the following when you select a location for the interactive flat panel:

- The wall must be strong enough to support the interactive flat panel and the mounting equipment. The interactive flat panel weighs 169.8 lb. (77 kg).
- Select a wall with a flat, regular surface and sufficient clearance to accommodate your interactive flat panel. For best presentation alignment, mount your interactive flat panel in a location that's central to your audience's viewing direction.
- Choose a location for your interactive flat panel that's far from bright light sources, such as windows and strong overhead lighting. Bright light sources can cause distracting shadows on your interactive flat panel and can cause glare.

For mobile or adjustable installation options, contact your authorized SMART reseller (smarttech.com/where).

Choosing a mounting height

Mount the interactive flat panel according to audience and/or user(s) height. The flat panel height is based on the midpoint between the reach of the students and the teacher.



Cable management

When connecting cables from the interactive flat panel to a computer and other peripheral devices, ensure the cables aren't a trip hazard. The use of channels and raceways safely hides cables. For accessories and options, contact your authorized SMART reseller.

CHAPTER 2

Installing your interactive flat panel

IMPORTANT

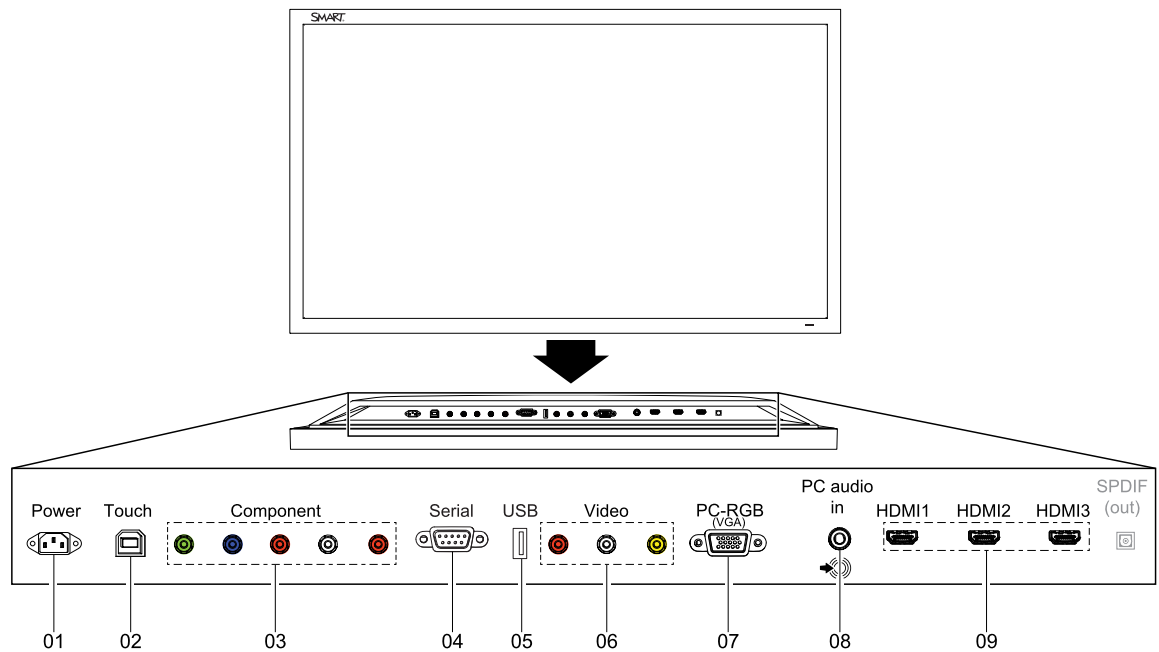
Do not connect the power cable to a power outlet until you have connected all the other cables to the interactive flat panel.

Connecting your interactive flat panel

The connector panel is at the bottom of your interactive flat panel.

NOTE

The power, PC-RGB (VGA) and USB cable are included with your interactive flat panel.



No.	Connector	Details
1	AC power	AC power pass-through
2	USB B receptacle	Computer to interactive flat panel touch interface
3	Video in	Component video receptacle

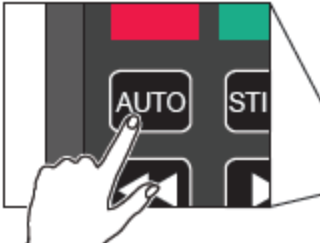
CHAPTER 2

Installing your interactive flat panel

No.	Connector	Details
4	Service port	RS-232 connector WARNING This is a servicing port for the product and must only be used by a qualified trained technician, this port is NOT for customer usage.
5	USB A	Media port; contents accessible using the control panel menu or the remote control (see Multi media mode)
6	Video in	Composite video receptacle
7	Video in	PC-RGB (VGA)
8	Audio in	Stereo 3.5 mm connector (from computer)
9	Video in	HDMI™

IMPORTANT

If you see flicking or the display is not sized correctly pressing the **Auto** button will help with the adjustment process. Ensure that you check and change E70 display to recommended resolution for best performance.



Configuring your computer's screen resolution

When you connect a computer to the interactive flat panel, you may have to adjust the computer's screen resolution to achieve the best image quality and touch performance.

Recommended computer screen resolution

SMART recommends the following computer screen resolutions:

NOTE

1920 × 1080 and 1280 × 720 are the recommended screen resolutions for best performance and most accurate touch.

1920x1080 *

1280x768

1600x1200

1280x720 *

CHAPTER 2

Installing your interactive flat panel

1280x1024	1024x768
1360x768	800x600
1280x960	640x480

Windows 7 and Windows 8 operating systems

To configure your computer's screen resolution

NOTE

This procedure varies depending on your version of Windows operating system and your system preferences.

1. Right click on an empty space on the desktop screen and select **Screen Resolution** from the menu.
2. Click *Display* and select the **SMART E70**.
3. Beside *Resolution*, use the drop-down menu to select a screen resolution. Refer to *Configuring your computer's screen resolution* on the previous page.
4. Click **OK**.

The computer applies the new screen resolution. See [Configuring and calibrating your SMART Board E70 interactive flat panel with Windows](#) for setup and extended display settings.

Mac OS operating system software

To configure your Mac computer's screen resolution

1. Click the **Apple** (🍏) menu.
2. Click **System Preferences > Displays**.

The *Display* window appears.

3. Select a screen resolution from the list. Refer to *Configuring your computer's screen resolution* on the previous page.

The computer applies the new screen resolution. See [Calibrating your SMART Board E70 interactive flat panel with Mac OS X](#) for setup and extended display settings.

Chapter 3

Using your interactive flat panel

Using the remote control	9
Menu control panel	12
On-screen display menu	13
Picture settings	13
Audio settings	13
Setup settings	13
Time settings	14
Multi Media mode	14
Compatible file formats	14
Video	14
Audio	15
Images	15

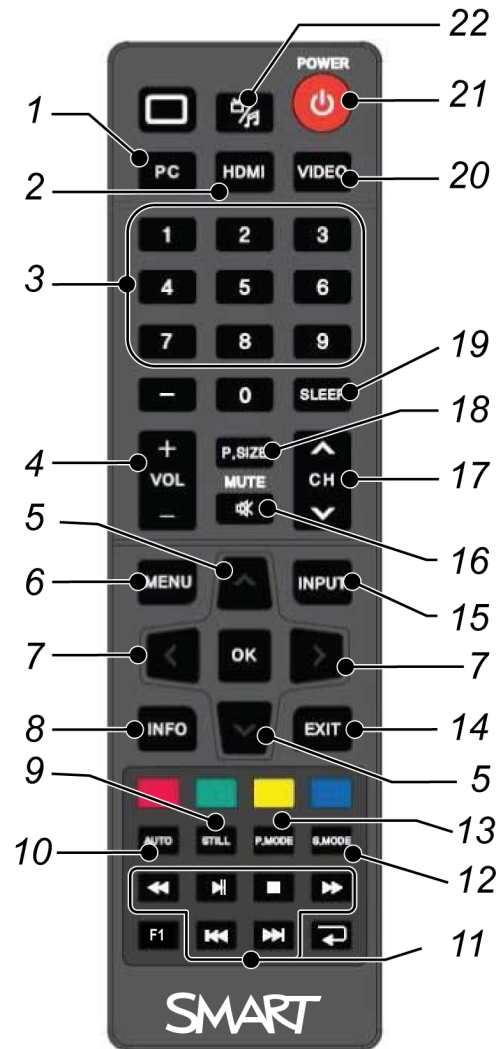
This chapter describes the basic operation and setup of your interactive flat panel.

Using the remote control

The infrared remote control enables you to turn on and turn off your interactive flat panel, to change the input source, to change the volume and more. You can also use the remote control to open the on-screen display menu and then change the interactive flat panel's settings.

CHAPTER 3


Using your interactive flat panel



No.	Button	Details
1	PC	Selects the VGA input
2	HDMI	Select the HDMI input
3	[Number buttons]	Press buttons on the number pad to change channels
4	VOL +/-	Increase or decrease the audio output level
5	[Up and down buttons]	Select a menu option in the on-screen display menu
6	MENU	Display the on-screen display menu

CHAPTER 3

Using your interactive flat panel

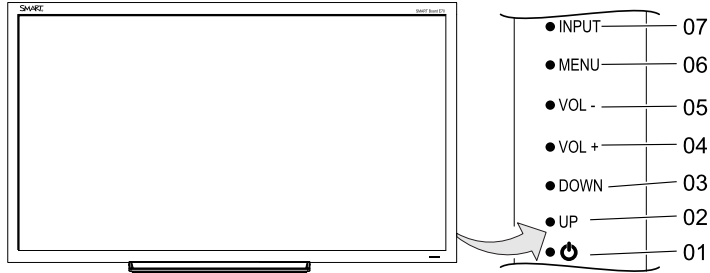
No.	Button	Details
7	[Left and right buttons]	<ul style="list-style-type: none">• Select an option in the on-screen display menu• Use the right button to increase a value• Use the left button to decrease a value
8	INFO	Display the current video source
9	STILL	Turn on or off the still picture mode
10	AUTO	Automatically adjusts the VGA video input  IMPORTANT This will automatically adjust the image to the settings display adapter is sending, in most cases this will help or solve touch issues, manually adjust E70 display settings if needed.
11	[Media buttons]	Use these while in Multi Media mode
12	S.MODE	Switch between stereo and mono sound
13	P.MODE	Switch between color modes
14	EXIT	Close the on-screen display menu
15	INPUT	Switch video inputs
16	MUTE	Mute audio inputs for your interactive flat panel
17	CH +/-	Change channels
18	P.SIZE	Select the video aspect ratio
19	SLEEP	Set the sleep timer
20	VIDEO	Select the RCA input
21	Power	Turn on or turns off the interactive flat panel
22	Multi Media button	Display the Multi Media mode

CHAPTER 3

Using your interactive flat panel

Menu control panel

The menu control panel enables you to access the on-screen display menu to adjust settings.



No.	Button	Details
1	Power	Turn on or turn off the interactive flat panel
2	UP	Move the highlighted area up to select items in the on-screen display menu
3	DOWN	Move the highlighted area down to select items in the on-screen display menu
4	VOL +	Move the highlighted area left to select items in the on-screen display menu, increase the audio output level and increase settings
5	VOL -	Move the highlighted area right to select items in the on-screen display menu, decrease the audio output level and decrease settings
6	MENU	Display the on-screen display menu
7	INPUT	Toggle between video inputs for your interactive flat panel

On-screen display menu

You can access the on-screen display (OSD) menu by pressing **MENU** on the menu control panel on the right side of the interactive flat panel or on the remote control. To exit the OSD menu, press **MENU** on the menu control panel on the right side of the interactive flat panel or **EXIT** on the remote control.


Picture settings

Menu item	Function
Picture Mode	Sets the picture mode to Custom, Standard, Mild or Vivid
Brightness	Adjusts the overall brightness of the image and background
Contrast	Adjusts the brightness of the image in relation to the background
Tint	Adjusts the tint of the screen
Color	Adjusts the color depth of the screen
Color Temp	Sets the color temperature to Normal, Warm or Cold

Audio settings

Menu item	Function
Surround	Turns on or off the surround sound
Sound Mode	Sets the audio mode to Music, Standard, User, News or Movie
Auto Volume	Turns on or off the automatic volume adjustment

Setup settings

Menu item	Function
Menu Language	Selects the language used by the OSD menu
Menu Trans.	Adjusts the transparency of the OSD menu
Screen Mode	Sets the image size to 16:9, 4:3, Zoom1 or Zoom2
Reset	Resets all Setup options
Software Update	<div style="background-color: #f0f0f0; padding: 5px;">  NOTE Software update should be performed only by a system administrator. Please contact your authorized SMART reseller if you require further assistance. </div>

CHAPTER 3

Using your interactive flat panel

Time settings

Menu item	Function
Time mode	Sets the time mode to automatic or manual
Time	Sets the time manually
Sleep Time	Sets the sleep timer
On Timer	Turns on the On Time function
On Time	Sets when the interactive flat panel turns on
Volume	Sets the volume when the interactive flat panel turns on
Off Timer	Turns on the Off Time function
Off Time	Sets when the interactive flat panel turns off

Multi Media mode

You can play video files, view images and listen to music stored on the USB drive. Use the remote control to pause, fast-forward and rewind videos.

Compatible file formats

The interactive flat panel can play the following file types.

Video

Category	Code
MPEG1	MPEG1
MPEG2	MPEG2

CHAPTER 3

Using your interactive flat panel

Category	Code
MPEG4	AVC
	MPEG-4 Visual
	DivX5
	DivX4
	DivX3
	XviD
	MS-MEG4 V3
	WMV3
MJPEG	M-JPEG


Audio

- AC-3
- AAC
- MP3
- PCM

Images

- JPEG
- BMP
- PNG
- GIF
- TIFF

To access content on the USB drive

1. Turn on the interactive flat panel
2. On the remote control press, the **Multi Media**  button.
3. Connect a USB drive to the USB A receptacle on the bottom connector panel. See *Connecting your interactive flat panel* on page 5.
4. Use the remote control to select a file.
5. Press the **Play** button on the remote control to view the file.

Chapter 4

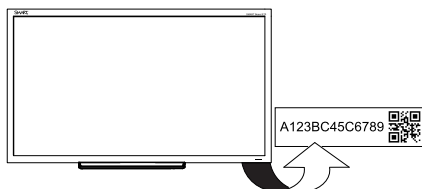
Troubleshooting your interactive flat panel

Locating the serial number	17
Resolving common touch control and resolution issues with Windows and Mac operating systems	18
Resolving image issues	21


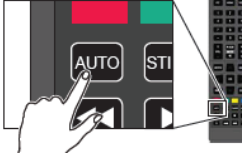
This chapter provides you with the information necessary to solve simple issues that occur with your interactive flat panel. If issues persist, or aren't covered in this chapter, contact SMART Support (smarttech.com/support) or your authorized SMART reseller (smarttech.com/where).

Locating the serial number

When you contact SMART Support, you might be asked to provide the E70 interactive flat panel's serial number. The serial number is located under the front right bezel.




Resolving common touch control and resolution issues with Windows and Mac operating systems

Problem	Cause	Solution
<p>Resolution and/or touch inaccuracies</p> <div style="background-color: #f0f0f0; padding: 10px; border: 1px solid #ccc;"> <p> NOTE</p> <p>The recommended resolutions for the SMART E70 interactive flat panel are:</p> <ul style="list-style-type: none"> • 1920 × 1080 and • 1280 × 720 <p>see Recommended computer screen resolution in this guide for more information and settings.</p> </div>	<p>When the resolution is not set to recommend setting the touch detection system may not function as expected. The image should fill the screen fully, no black bars on top, bottom or on the sides.</p>	<p>The easiest and the best practice is to always use the auto button on the remote.</p>  <p>This will automatically adjust the image to the settings display adapter is sending, in most cases this will help or solve touch issues, manually adjust E70 display settings if needed. See Configuring your computer's screen resolution.</p>

CHAPTER 4

Troubleshooting your interactive flat panel

Problem	Cause	Solution
Touch isn't working as expected.	The USB cable between the computer and the interactive flat panel could be loose.	Check all cable connections
	Bright lights are interfering with the interactive flat panel.	Close blinds or shades or dim all halogen lights and LEDs.
	Your interactive flat panel isn't calibrated properly.	<p>Your SMART E70 interactive flat panel may need to be re-calibrated.</p> <p>For Windows 7 or 8 operating systems see Configuring and calibrating your SMART E70 interactive flat panel with Windows in this user guide.</p> <p>For Mac OS X 10.7 or 10.8 see Calibrating SMART E70 interactive flat panel with Mac.</p>

 **IMPORTANT**

The E70 interactive flat panels are pre-calibrated and oriented at the factory. Calibration should be done only by an administrator.

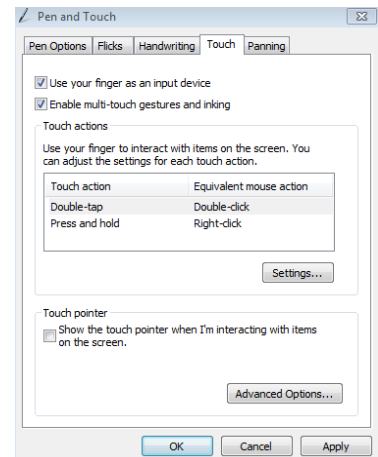
CHAPTER 4

Troubleshooting your interactive flat panel

Problem	Cause	Solution
---------	-------	----------

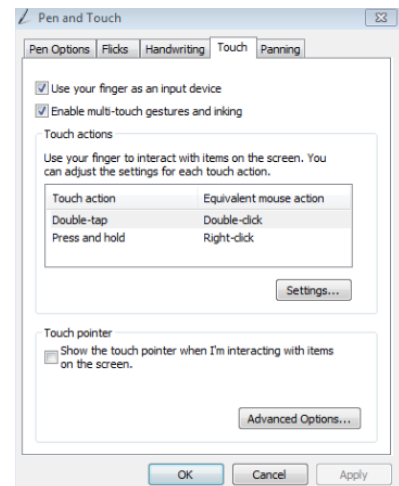
Pen and touch setting may not be selected.

1. Open Control Panel. Pen and Touch.
2. Select **Touch** tab.



3. Ensure that the following are selected:

Use your finger as an input device
Enable multi-touch gestures and inking



Click **Apply** and/or **OK**

Resolving image issues

Problem	Causes	Solution
The interactive flat panel doesn't turn on.	The interactive flat panel isn't connected to a power source.	Connect your interactive flat panel to a power outlet.
	The interactive flat panel is in Sleep mode.	Press the Power button on the menu control panel or on the remote control.
When the video source is HDMI, the image and audio are low quality.	The cable between the HDMI source and the interactive flat panel could be loose.	Check all cable connections.
	The HDMI cable could be too long.	Ensure the HDMI cable doesn't exceed 9' (3 m).
The image is poor quality and/or doesn't fit on the screen.	The computer's screen resolution is incorrect.	See <i>Configuring your computer's screen resolution</i> on page 6 to select the correct screen resolution.

Configuring and calibrating your SMART Board E70 interactive flat panel with Windows

If your SMART Board E70 interactive flat panel has an inaccurate touch or the touch is not working, you may need to configure or calibrate it. Follow the instructions below to configure and calibrate your SMART Board E70 interactive flat panel.

IMPORTANT

The SMART Board E70 interactive flat panel is factory calibrated. We recommend that you resolve touch inaccuracy through configuration prior to calibration.

Configuring your touch and display settings for the SMART Board E70

If touch is inaccurate:

- Ensure that your resolution is set to one of the supported resolutions (below). The following list contains the supported resolutions for your SMART Board E70 interactive flat panel:

1920x1080 *	1280x768
1600x1200	1280x720 *
1280x1024	1024x768
1360x768	800x600
1280x960	640x480

The resolutions marked with an asterisk (*) are recommended.

NOTE

There should be no black bar bars on the top bottom or on either side of the image, the image should completely fill the screen.

- If you have multiple displays for example and laptop connected to your E70, ensure that they are set up correctly ([See Setting up multiple displays](#))

CHAPTER 4

Troubleshooting your interactive flat panel

- Check your graphics card configuration (See [Graphics card configuration](#))
- Check your panel settings (See [Panel settings](#))
- Calibrate, or clear previously set calibration data (See [Calibrating of the SMART Board E70 with Windows 7 or 8](#))

If there is no touch:

- Ensure that the USB cable is properly connected.
- Try power cycling the SMART Board E70.
- Ensure that Windows automatically installed the required device drivers the SMART E70 and AFO TCM10X-700 HID should be listed under Windows **Devices and Printers**.
- If you have multiple displays, ensure the pen and touch are settings are correct (see [Setting up multiple displays](#)).

Graphics card configuration

If you are using an unsupported graphics card configuration is used you may experience a display problem or issues with touch accuracy. For example, you may experience issues if your graphics card scaling option is set to something other than full-screen.



IMPORTANT

When using an ATI video card they must go into the ATI Catalyst Control panel, go to the Flat Panel menu, select Pixel Format and change it to RGB 4:4:4 timing.

Panel settings

Ensure that you set the SMART Board E70's Screen Mode to either 16:9 or Full and that you select the correct input source.

To select input:

On the remote or on the side panel select **Input**, use the arrows to select input.

To change screen mode:

1. Select **Menu** on the remote or on the side panel.
2. Use the arrow keys and select **Setup** from the drop down list.
3. Use the arrow keys to move over and down to **Screen Mode** select **16:9** if not already selected.

CHAPTER 4

Troubleshooting your interactive flat panel

Setting up multiple displays

When you use your SMART Board E70 in a multiple display environment (that is, your computer has an additional monitor or a built-in display), you must ensure that your display settings are configured properly for your operating system.

Windows XP operating system

Ensure that:

- Your computer's display is mirrored or
- You set up the E70 to be your primary monitor

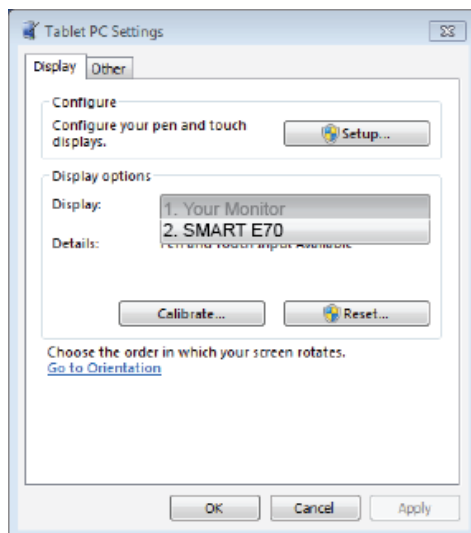
Calibrating Windows 7 or 8 operating system

To set up the SMART Board E70 as your touch screen:

NOTES

- Ensure the resolution has been set to recommend settings prior to calibration.
- Steps to calibration, first **Setup** then **Calibrate** (only calibrate if required).
 - a. Setup - This tells the system what device is a touch device and enables touch, test touch device after **Setup** if touch is accurate the calibration step may not be required.
 - b. Calibration - This step fine tunes touch points.

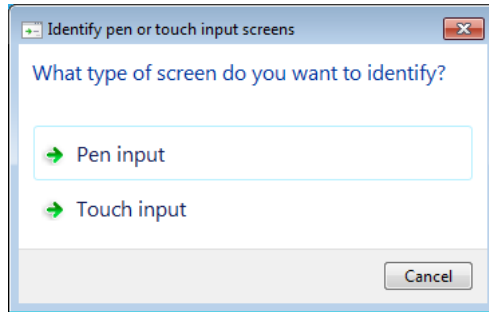
1. Launch Control Panel -> Tablet PC Settings. Ensure that the Display tab is visible. Ensure that the **Display** tab is visible. *Select E70* from the display drop down menu.



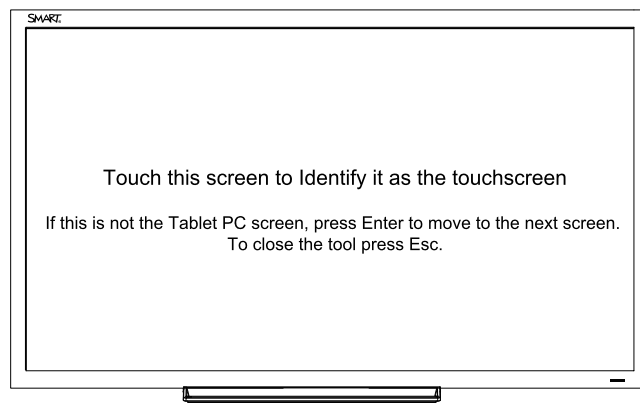
CHAPTER 4

Troubleshooting your interactive flat panel

2. Click **Setup** Windows displays the following page; select **Touch input**.



3. Windows displays the following page on your first display:



4. If necessary, press Enter until the page is displayed on your touch screen.
5. Tap your touchscreen two or three times until the text changes.
6. Press enter to skip through any remaining screens until the window closes.

NOTE

Do not touch any further touch screens as the correct association between the selected monitor and touch screen will be lost.

7. Click **OK**.

IMPORTANT

If you have difficulty with the above procedure, set up your E70 as the primary monitor (or main display) and try again. You can switch your main display back to its original setting after you have successfully identified the E70 as your touch screen.

CHAPTER 4

Troubleshooting your interactive flat panel

Calibrating your SMART BOARD E70 with Windows 7 or 8

Calibration ensures that your E70 recognizes the position of your pen. In Windows 7, when you calibrate for the first time, the screen uses 16 different reference points. This initial calibration applies to all users of the E70. If you calibrate again, only 4 points are used, and apply only to your user account. <http://windows.microsoft.com/en-ca/windows7/getting-more-out-of-your-tablet-pc>

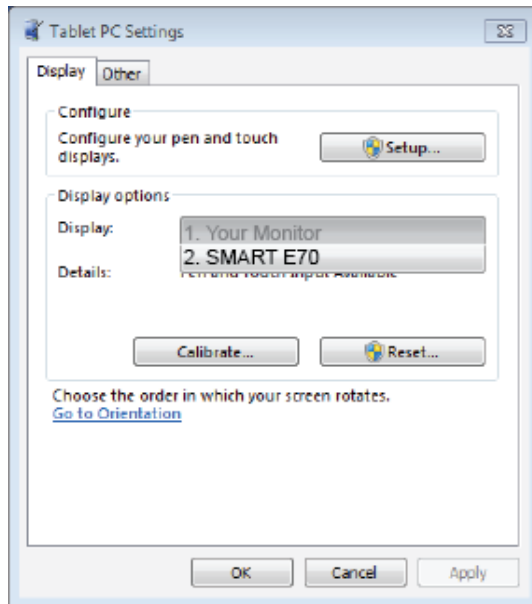
Under normal conditions, the SMART Board E70 should not require calibration. However, calibration may be required if touch is inaccurate.

NOTE

Calibration should be done only by an administrator.

To calibrate your SMART Board E70:

1. Launch Control Panel -> Tablet and PC Settings. Ensure that the **Display** tab is visible. Select **E70** from the display drop down menu.



NOTE

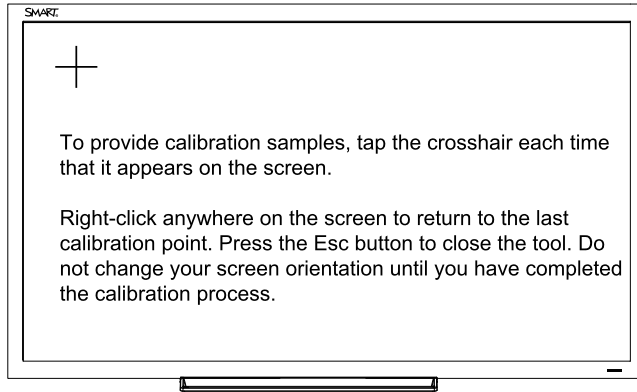
If you have multiple monitors ensure that you have identified the SMART E70 interactive flat panel as your touch screen with Windows 7 and Windows 8 operation systems, see previous step "Setting up multiple displays"

2. Click **Calibrate**.

CHAPTER 4

Troubleshooting your interactive flat panel

3. Then tap each cross as they appear.



NOTE

Each cross hair may take several attempts, so please be patient with this process.

4. Follow the instructions on screen.
5. When finished, click OK on the Tablet and PC settings page to commit your changes.

NOTE

If you make a mistake like tapping somewhere else other than the cross hair you will have to repeat the procedure.

The process is complete.

TIP

To clear your calibration data; for example, if you accidentally performed the procedure, click "Reset".

Calibrating your SMART Board E70 interactive flat panel with Mac OS X

You need to calibrate the SMART Board E70 interactive flat panel after you install the software or if you change the display resolution.

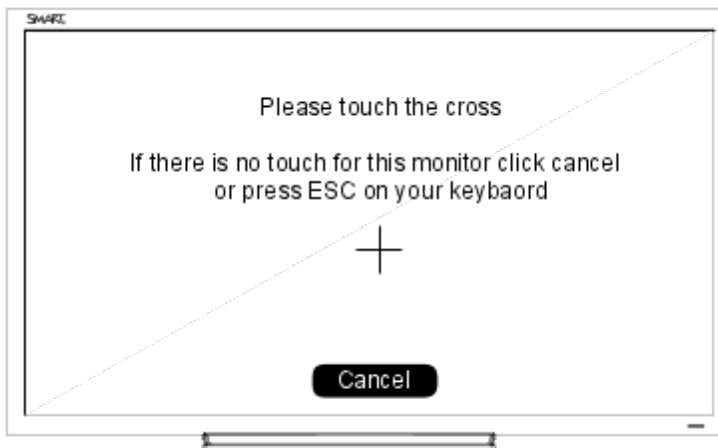
Calibrating your SMART Board E70

Before you calibrate your SMART E70 interactive flat panel, ensure that you have installed the required drivers. See smarttech.com/E70Software for product drivers and software.

To calibrate your SMART Board E70

1. Select the Orientation from system tray or SMART settings

The following screen is displayed on your first monitor.

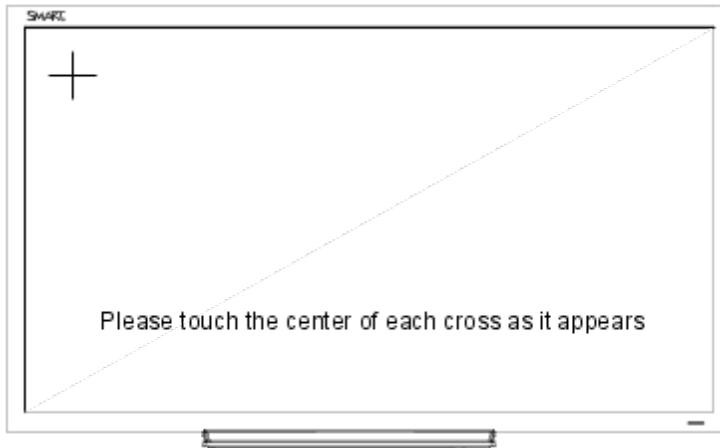


2. If you have multiple monitors, press Esc on your keyboard until the page is visible on your E70 touch interface.

CHAPTER 4

Troubleshooting your interactive flat panel

3. Tap the cross. After a few seconds the following screen appears. In some cases, you may have to tap twice.



4. Tap each cross as they appear once.



IMPORTANT

If there are multiple monitors, the orient screen will automatically move to the next monitor. If this other monitor is NOT an E70 touch screen press ESC or click Cancel with the mouse. If you accidentally touch the board while the screen is on this monitor, then you will have to repeat the above procedure.

SMART E70 multiple displays setup Mac

■ Extending desktop

1. Make sure each additional display is properly connected and powered on.
2. From the **Apple** (🍏) menu, choose **System Preferences**.
3. From the View menu, choose **Displays**.
4. Click the Arrangement tab.
5. Disable (uncheck) "**Mirror Displays**" in the bottom-left corner.

■ Mirroring desktop

1. Make sure your additional display is properly connected and powered on.
2. From the **Apple** (🍏) menu, choose **System Preferences**.

CHAPTER 4

Troubleshooting your interactive flat panel

3. From the View menu, choose (🍏).
4. Click the Arrangement tab.
5. Enable (check) "**Mirror Displays**" in the bottom-left corner.

Appendix A

Hardware environmental compliance

SMART Technologies supports global efforts to ensure that electronic equipment is manufactured, sold and disposed of in a safe and environmentally friendly manner.

Waste Electrical and Electronic Equipment and Battery regulations (WEEE and Battery Directives)

Electrical and electronic equipment and batteries contain substances that can be harmful to the environment and to human health. The crossed-out wheeled bin symbol indicates that products should be disposed of in the appropriate recycling stream and not as regular waste.



Batteries

Remote contains 2 AAA batteries. Recycle or dispose of batteries properly.

More information

See smarttech.com/compliance for more information.

Index

A

accessories
 included 2
Audio settings 13

B

batteries 31

F

file formats
 compatible 14

I

Included cables 2
installation
 choosing a location 4

L

light sources 4
location 4

M

Menu control panel 12
Multi Media mode 14

O

on-screen display menu 13

P

pen 2
Picture settings 13
projector
 installing 3

R

Recommended computer screen resolution 6
remote control 2

S

serial number
 locating 17
Setup settings 13

T

Time settings 14
tray 2

W

WEEE and Battery Directives 31

SMART Technologies

smarttech.com/support

smarttech.com/contactsupport

smarttech.com/kb/170534