

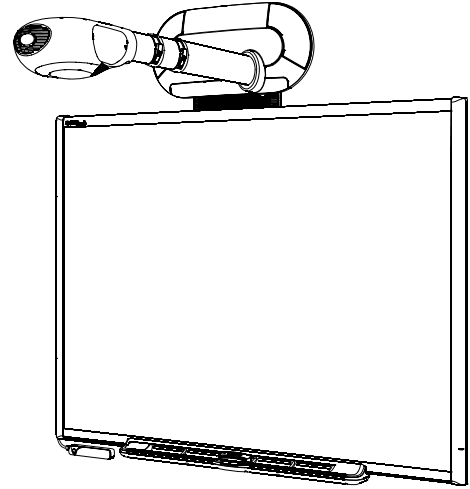
SMART Board™ Interactive Whiteboard System

Specifications – Model 660i

Physical Specifications

Unifi™ 35 Projector

Size	25 7/8" W × 14 3/8" H × 41 1/2" D (Max.) (65.7 cm × 36.5 cm × 105.4 cm)
Extended Connection Panel	7 5/8" W × 1 1/4" H × 1 3/8" D (19.4 cm × 3.2 cm × 3.5 cm)
Weight	33 lb. (15 kg)
Shipping Weight	52 lb. (23.6 kg)
Shipping Size	30" W × 19" H × 45" D (76.2 cm × 48.3 cm × 114.3 cm)



SMART Board™ 660 Interactive Whiteboard

Size	54 3/4" W × 41 5/8" H × 5 1/8" D (139.2 cm × 105.8 cm × 13 cm)
Active Screen Area (maximum interactive, projected image)	51 1/4" W × 38 1/4" H (130.2 cm × 97.2 cm) 64" diagonal (162.6 cm)
Weight	21 lb. 14 oz. (9.9 kg)
Shipping Weight	35 lb. (15.9 kg)
Shipping Size	46" W × 64 1/2" H × 5 1/2" D (116.8 cm × 163.8 cm × 14 cm)

All dimensions +/- 1/8" (3.2 mm). All weights +/- 2 lb. (0.9 kg).

Standard Features

Software	SMART Notebook software included. See the SMART Notebook software specifications for a complete list of system requirements. Software upgrades are available at www2.smarttech.com/st/en-US/Support/SBS/ .
Certifications and Compliance	UL (U.S./Canada), CE, FCC, PSE, VCCI, NOM, RoHS (China), RoHS (Europe), WEEE
Warranty	Two-year limited equipment warranty on the projector, control module and extended connection panel. The projector lamp has a 500 hour/90 day warranty. The interactive whiteboard has a five-year limited equipment warranty upon registration. See warranty documents for details.
Mounting Template	This template ensures a simple installation and accurate alignment between the Unifi 35 projector and your SMART Board 660 interactive whiteboard. Use this document in place of the installation instructions provided with your interactive whiteboard.
Cables	6' (1.8 m) HD-DB15 male-to-male video, 9' 10" (3 m) DVI-I to HD-DB15 male video, 6' (1.8 m) 3.5 mm stereo audio, and 6' (1.8 m) and 16' (5 m) USB cables provided

Interactive Whiteboard Features

Pen Tray	Optical sensors in the pen tray detect when you lift a pen or the eraser from the tray. LEDs show the active tool.
Pens and Eraser	Black, blue, red and green pens and a rectangular eraser
Resolution	Touch resolution is approximately 4000 × 4000.
Screen Surface	The hard-coated polyester surface is tear proof, optimized for projection, compatible with dry-erase markers and easily cleaned with whiteboard cleaner.
Digitizing Technology	Resistive
Frame Finish	Two-tone gray (approximates Pantone® Charcoal Gray 18-0601 TPX) and Ultrasonic Chrome (approximates metallic Pantone 877 C)
Wall-Mount Bracket	32" (81.3 cm) wide with five screws and drywall anchors to support the interactive whiteboard.
Installation Instructions	Do not use when installing the 660i system. The installation instructions are for interactive whiteboard installations that don't include the Unifi projector.

Unifi 35 Projector Features

On-Screen Interface	Includes interactive tools for controlling the projector, making notes over projected images and saving ScratchPad pages to a USB storage device.
Projector Head	Includes a focus ring and a side-mounted access door for changing the lamp.
Display Type	True XGA (1024 × 768) projector
Display Technology	Projection engine does not require cleaning or filter replacement. The projection engine uses DLP® technology by Texas Instruments® and features Vikuiti™ Super Close Projection technology from 3M.
Brightness	1500 ANSI lumens, typical
Lamp Life	2000 hours (Standard mode), 3000 hours (Economy mode)
Aspect Ratio	4:3 native, with support for 16:9
Contrast Ratio	1000:1 (FO/FO) (minimum)
Video Compatibility	NTSC, PAL, SECAM, Composite, S-video, Component (YPbPr/YCbCR), SDTV (480i, 576i), EDTV (480P, 576P), HDTV (720P, 1080i), VGA, SVGA, SGA, SXGA, MAC (UXGA)
Synchronization	Auto image synchronization (auto tracking, frequency, position adjustment, source detect and phase detect)
Scanning Rate	H-sync 15 kHz to 82 kHz, V-sync 50 Hz to 85 Hz
Color	True color (16.7 million 24-bit colors)
Audio System	Integrated stereo amplifier and speakers (20 watts per channel)
Mounting Hardware	Hardware supplied for mounting the Unifi projector and the extended connection panel to framed and concrete walls

Specifications – Model 660i

Input/Output Connections	DVI-I jack HD-DB15 jack Two 3.5 mm stereo jacks 3.5 mm stereo jack Mini DIN 4-pin connector RCA jack Two RCA jacks Three RCA jacks Two USB A receptacles USB B receptacle DB9F Power reset connector AC power receptacle	-analog or digital projector video input - RGB video from computer, linked to extended connection panel - audio inputs, one linked to extended connection panel - audio output - S-video input, linked to extended connection panel - composite video input, linked to extended connection panel - stereo audio input, linked to extended connection panel - component video input - one for USB storage device, linked to extended connection panel - one for USB link to interactive whiteboard - computer data connection, linked to extended connection panel - serial (RS-232) computer or external control system connection - linked to extended connection panel Reset button - accepts standard IEC power cable or adapter
Projector Noise	34 dBA (Standard mode) / 32 dBA (Economy mode)	
Power Requirements	100V to 240V AC 50/60 Hz, 450 W	
Power Switch	Master power control switch	
Power Cable	Three 14' 9" (4.5 m) power cables provided (U.S., UK and Europe)	
External Control	RS-232 input configured to accept control codes from computer or room control system	
Power Consumption	450 W maximum	
Remote Control	Provides an alternate method of controlling the 660i system's major features	

Extended Connection Panel Features

Input/Output Connections	HD-DB15 jack 3.5 mm stereo jack USB A receptacle RCA jack Two RCA jacks Mini DIN 4-pin connector USB B receptacle	- RGB computer video input - computer audio input - connection for USB storage device - composite video input - stereo audio inputs - S-video input - computer data input
Power Button	Turns the Unifi projector and interactive whiteboard on or off	

Control Module Features

Power Button	Large power button, with an illuminated status ring, turns the system on or off
Menu Button	Shows and hides the Unifi projector's on-screen interface
Volume Control	Adjusts the integrated audio system's volume

Storage and Operating Specifications

Storage	-22°F to 122°F (-30°C to 50°C) with 90% humidity, non-condensing
Operation	From 0' to 2500' (0 m to 762 m) 50°F to 95°F (10°C to 35°C) with 20 to 80% humidity, non-condensing From 2500' to 5000' (762 m to 1524 m) 50°F to 86°F (10°C to 30°C) with 20 to 80% humidity, non-condensing From 5000' to 10000' (1524 m to 3048 m) 50°F to 77°F (10°C to 25°C) with 20 to 80% humidity, non-condensing

SMART Order Number

660i SMART Board 660i interactive whiteboard system includes a SMART Board 660 interactive whiteboard integrated with a Unifi 35 projector.

Optional Accessories

USB-XT 16' (5 m) USB active extension cable

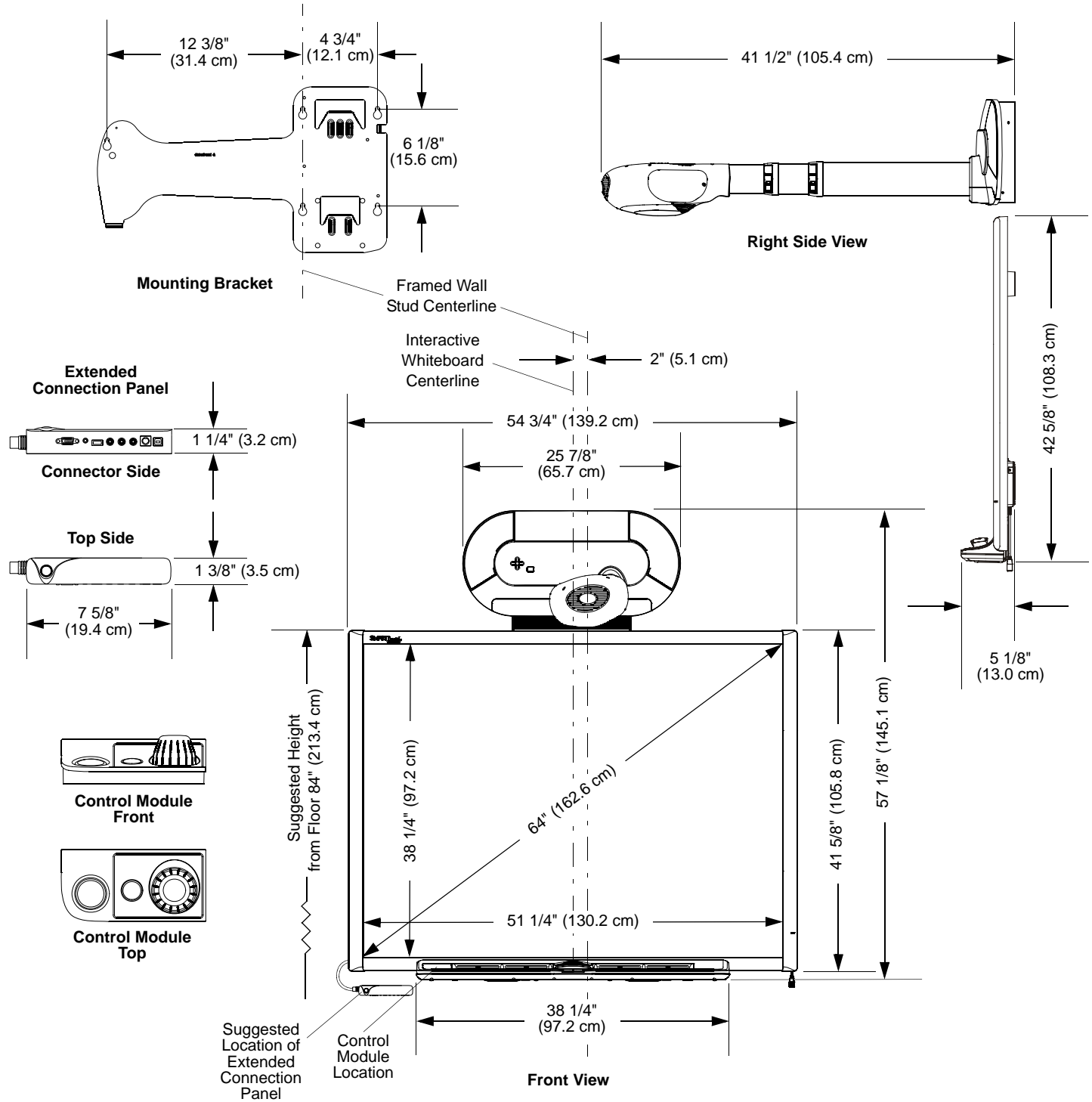
CAT5-XT USB to Cat 5 cable extender set, includes two 6' (1.8 m) USB cables

RPEN-ER Replacement set of four pen tray pens (black, red, blue and green) and a rectangular eraser

RPEN Replacement set of four pen tray pens (black, red, blue and green)

USB-GW GoWire™ SMART Board software auto-launch USB cable

Physical Dimensions



www.smarttech.com/support www.smarttech.com/contactsupport
 Support +1.403.228-5940 or Toll Free 1.866.518.6791 (U.S./Canada)

© 2006–2008 SMART Technologies ULC. All rights reserved. Unifi, SMART Board, GoWire, smarttech and the SMART logo are trademarks or registered trademarks of SMART Technologies ULC in the U.S. and/or other countries. All other third-party product and company names may be trademarks of their respective owners. Patent No. US5448263; US6141000; US6320597; US6326954; US6337681; US6540366; US6741267; US6747636; US7151533; US7289113; and CA2058219. Other patents pending. Specifications are subject to change without notice. 08/2008.

