

Specifications

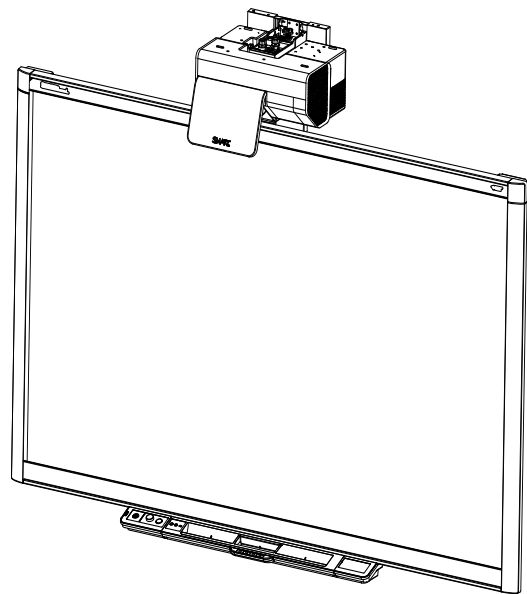
SMART Board® interactive whiteboard system

Model X885ix/885ix-SMP

Physical specifications

SMART Board® 885 interactive whiteboard

Size	78 1/2" W × 53 3/8" H × 6 1/2" D (199.4 cm × 135.6 cm × 16.5 cm)
Active screen area (maximum interactive projected image)	74" W × 46 1/4" H (188 cm × 117.5 cm) 87" (221 cm) diagonal 16:10 aspect ratio
Weight	60 lb. (27.2 kg)
Shipping size	4 3/8" W × 56 3/4" H × 88" D (11.1 cm × 144.1 cm × 223.5 cm)
Shipping weight	
SBX885ix	1 unit: 90 lb. (40.8 kg)
SB885ix-SMP	1 unit: 95 lb. (43.1 kg)



All dimensions +/- 1/8" (0.3 cm). All weights +/- 2 lb. (0.9 kg).

SMART UX60 projector

Size	17 3/8" W × 10 1/2" H × 16 1/2" D (44.1 cm × 26.7 cm × 41.9 cm)
Remote control	1 5/8" W × 3 3/8" H × 1/4" D (4.1 cm × 8.6 cm × 0.6 cm)
Weight	22 lb. (10 kg)

Extraordinary made simple®

SMART®

SPECIFICATIONS

SMART Board interactive whiteboard system – Model X885ix/885ix-SMP

Shipping weight	38 lb. 6 oz. (17.4 kg)
Shipping size	18 3/4" W × 18 1/8" H × 22 5/8" D (47.6 cm × 46 cm × 57.5 cm)

Extended control panel (ECP)–SBX885i5 only

Size	6 5/8" W × 2 1/8" H × 4 5/8" D (16.8 cm × 5.5 cm × 11.9 cm)
Shipping size	16 1/2" W × 14" H × 3" D (41.9 cm × 35.6 cm × 7.6 cm)
Shipping weight	5 lb. 11 oz. (2.6 kg)

i NOTE

The SB885ix-SMP ships with the ECP and SBX800 CAT5-XT USB extender already attached to the pen tray of the SMART Board 885 interactive whiteboard.

Standard features

Software	The following software options are available, either: SBX885ix SMART Notebook™ collaborative learning software including SMART Product Drivers OR SB885ix-SMP SMART Meeting Pro™ software including SMART Product Drivers
Environmental compliance	EU REACH, RoHS, WEEE, Battery and Packaging, US Packaging and China EIP
Regulatory certification	CB, CE, UL/CSA(US/Canada), NOM, GOST-R, PSE, VCCI, C-Tick, CCC, PSB, KC and FCC
Power consumption	301 W in Standard mode and less than 1 W in Standby mode, in accordance with EuP regulations
Cables	Includes the necessary cables to connect the projector to the ECP. However, you must supply the appropriate input cables for your devices. The following cables are included with each system option:

SPECIFICATIONS

SMART Board interactive whiteboard system – Model X885ix/885ix-SMP

System	Cables
SBX885ix	Includes a wire management bundle that enables you to connect secondary computers to the projector.
SB885ix-SMP	An SBX800 CAT5-XT USB extender is included and enables you to connect your interactive whiteboard pen tray to a guest computer up to 50' (15 m) away using a Cat 5, Cat 5e or Cat 6 cable (not included). For more information, see smarttech.com/kb/154489 .

Interactive whiteboard features

Touch and gestures

Perform mouse functions with your finger, and write and erase digital ink with a pen tray pen or the eraser. The Object Awareness feature enables you to pick up a pen, and then write, select or erase without replacing the pen. This interactive whiteboard also features gesture capability, providing a natural and flexible way to interact with content.

Multitouch capabilities

Users can interact with the interactive whiteboard using the included pens or other objects, or by using their fingers to write and perform gestures.

The following multitouch capabilities are available:

System	Multitouch capability
SBX885ix	Support for four simultaneous touches enables up to four users to interact with the interactive whiteboard.
SB885ix-SMP	Support for two simultaneous touches enables up to two users to interact with the interactive whiteboard.

Pen tray

Optical sensors in the pen tray detect when you lift a pen or eraser from the tray. Color buttons on the pen tray enable you to select pen color.

The following pen tray features are available:

System	Features
SBX885ix	Removable end caps for optional accessories
SB885ix-SMP	The ECP is installed to the pen tray. The pen tray also features the SBX800 CAT5-XT USB extender.

Pen and eraser

Two ergonomic pens with a comfort grip and a rectangular eraser

Resolution

Touch resolution is approximately 4000 × 4000.

Screen surface

The hard-coated steel surface is durable, optimized for projection, compatible with dry-erase markers and easily cleaned.

Digitizing technology

Four-camera DVIT® (Digital Vision Touch) technology

SPECIFICATIONS

SMART Board interactive whiteboard system – Model X885ix/885ix-SMP

Frame finish Two-tone gray (Dark gray approximates PANTONE® Charcoal Gray 18-0601 TPX. Light gray approximates PANTONE Cool Gray 6C.)

Wall-mount bracket Two 32" (81.3 cm) wide brackets with 10 screws and toggle bolt anchors to support a wall-mounted interactive whiteboard

Computer connection The following computer connection methods are available:

System	Connection method
SBX885ix	16' (5 m) USB 2.0 cable to room computer
SB885ix-SMP	<ul style="list-style-type: none">16' (5 m) USB 2.0 cable and 7' (2.1 m) SMART GoWire™ auto-launch cable to room computer50' (15.2 m) SBX800 CAT5-XT USB extender to guest computer

Power requirements The interactive whiteboard system obtains power from the projector through the ECP cable.

SMART UX60 projector features

System components Ultra-short-throw SMART UX60 projector, mounting bracket, remote control and cleaning cloth.

Image adjustment The adjustment module includes five mechanical adjustments for aligning the projector image with your interactive whiteboard. The projector also has a focus dial and a digital on-screen menu for brightness, contrast and other image attributes.

Display type WXGA 1280 × 800

Display technology The projection engine uses single chip DLP® technology by Texas Instruments™, providing BrilliantColor™ performance, High Contrast and Gamma 2.1 correction with Bright Room, Dark Room, sRGB, User and SMART Presentation modes, and a six-segment color wheel.

Brightness Estimated at 2000 lumens (typical) in Standard 230 W mode at a CCT of 6500 K by the IEC method. Estimated at 1500 lumens in Economy 190 W mode

Lamp life 2500 hours in Standard 230 W mode. 4000 hours in Economy 190 W mode

Aspect ratio Native 16:10 aspect ratio with support for 16:9, and 5:4 and 4:3 aspect ratios with source image scaling.

Contrast ratio 2000:1

Video system compatibility HDTV (720p and 1080i) video system compatibility and HD Ready (HDMI technology and 720p) available, NTSC, NTSC 4.43, PAL, PAL-N, PAL-M, SDTV (480i/p and 576i/p) and SECAM

Copy protection HDCP compliant using the HDMI input connection

SPECIFICATIONS

SMART Board interactive whiteboard system – Model X885ix/885ix-SMP

Video interface compatibility	VGA (RGB or Component), S-video, Composite video and HDMI																																
Synchronization	Auto image synchronization (auto tracking, frequency, position adjustment, source detect and phase detect)																																
Mounting hardware	Includes safety tether and hardware for mounting the SMART UX60 projector on framed, hollow and solid walls.																																
Projector mounting template	The template ensures simple installation and accurate alignment between the SMART UX60 projector and your SMART Board interactive whiteboard.																																
Input/output connections	<table border="1"><thead><tr><th>Connector</th><th>Connects to</th></tr></thead><tbody><tr><td>Power</td><td>Main power source</td></tr><tr><td>3-pin power mini-DIN 5V/1A output</td><td>[Not used]</td></tr><tr><td>4-pin power mini-DIN 5V/2A output</td><td>ECP cable harness</td></tr><tr><td>7-pin mini-DIN</td><td>ECP cable harness</td></tr><tr><td>DB9 RS-232F</td><td>ECP cable harness</td></tr><tr><td>DB15F RGB video input (VGA 1)</td><td>Primary computer (cable not included)</td></tr><tr><td>DB15F RGB video input (VGA 2)</td><td>Secondary computer (cable not included)</td></tr><tr><td>3.5 mm phone jack audio input (×2)</td><td>Pen tray (For primary and secondary computer audio output.)</td></tr><tr><td>DB15F RGB video output (VGA Out)</td><td>Secondary display (cable not included)</td></tr><tr><td>3.5 mm phone jack audio output (×1)</td><td>External audio system (cable not included)</td></tr><tr><td>RCA composite video input (and left and right RCA audio input)</td><td>Video and audio source (cable not included)</td></tr><tr><td>4-pin mini-DIN S-video input (and left and right RCA audio input)</td><td>Video and audio source (cable not included)</td></tr><tr><td>HDMI input</td><td>High-definition audio/video source (cable not included)</td></tr><tr><td>RJ45</td><td>Network (For web page management and SNMP access. Cable not included)</td></tr><tr><td>USB B</td><td>Computer (For service access only, Cable not included.)</td></tr></tbody></table>	Connector	Connects to	Power	Main power source	3-pin power mini-DIN 5V/1A output	[Not used]	4-pin power mini-DIN 5V/2A output	ECP cable harness	7-pin mini-DIN	ECP cable harness	DB9 RS-232F	ECP cable harness	DB15F RGB video input (VGA 1)	Primary computer (cable not included)	DB15F RGB video input (VGA 2)	Secondary computer (cable not included)	3.5 mm phone jack audio input (×2)	Pen tray (For primary and secondary computer audio output.)	DB15F RGB video output (VGA Out)	Secondary display (cable not included)	3.5 mm phone jack audio output (×1)	External audio system (cable not included)	RCA composite video input (and left and right RCA audio input)	Video and audio source (cable not included)	4-pin mini-DIN S-video input (and left and right RCA audio input)	Video and audio source (cable not included)	HDMI input	High-definition audio/video source (cable not included)	RJ45	Network (For web page management and SNMP access. Cable not included)	USB B	Computer (For service access only, Cable not included.)
Connector	Connects to																																
Power	Main power source																																
3-pin power mini-DIN 5V/1A output	[Not used]																																
4-pin power mini-DIN 5V/2A output	ECP cable harness																																
7-pin mini-DIN	ECP cable harness																																
DB9 RS-232F	ECP cable harness																																
DB15F RGB video input (VGA 1)	Primary computer (cable not included)																																
DB15F RGB video input (VGA 2)	Secondary computer (cable not included)																																
3.5 mm phone jack audio input (×2)	Pen tray (For primary and secondary computer audio output.)																																
DB15F RGB video output (VGA Out)	Secondary display (cable not included)																																
3.5 mm phone jack audio output (×1)	External audio system (cable not included)																																
RCA composite video input (and left and right RCA audio input)	Video and audio source (cable not included)																																
4-pin mini-DIN S-video input (and left and right RCA audio input)	Video and audio source (cable not included)																																
HDMI input	High-definition audio/video source (cable not included)																																
RJ45	Network (For web page management and SNMP access. Cable not included)																																
USB B	Computer (For service access only, Cable not included.)																																
Projector fan operating temperatures	<ul style="list-style-type: none">• Standard speed: 0' to 6000' (0 m to 1800 m): 41°F to 95°F (5°C to 35°C)• High speed: 6000' to 6800' (1800 m to 2100 m): 41°F to 86°F (5°C to 30°C)																																
Projector noise	36 dBA at high speed and 31 dBA at standard speed, measured using the JIS method																																

SPECIFICATIONS

SMART Board interactive whiteboard system – Model X885ix/885ix-SMP

Power requirements 100V–240V AC at 50 Hz–60 Hz

Power cable Includes a 14' 9" (4.5 m) power cable

External control Both serial (via RS-232) and SNMP (via Ethernet) control are supported. The RS-232 control connector is configured to accept codes from your computer or an optional room control system.

The following system connection options are available:

System	Connection options
SBX885ix	4-pin connector on ECP for RS-232 protocol room control systems. The cable is available separately (part number SBX8-CTRL) from your authorized SMART reseller (smarttech.com/wheretobuy).
SB885ix-SMP	4-pin connector on ECP for RS-232 protocol room control systems. The cable is included.

Remote control Provides the primary method of controlling projector settings

Theft protection The projector system features optional security screws on the projector plate to safeguard the adjustment knobs, and two optional padlock rings to secure the system to the mounting bracket.

There are no projector menu options on the [Control Panel]. Keep your remote control in a safe place because the [Control Panel] is not a substitute for the remote control.

A Kensington security slot is provided to secure the SMART Board to a wall as a visual and physical theft deterrent.

ECP features

Input/output connections

Connector	Connects to:
RJ11 6-wire	Pen tray
11-pin	ECP cable harness
4-pin	Optional room control system adapter (included with SB885ix-SMP only)
USB B	Pen tray
USB mini-B	Primary computer (not included) using the included cable
USB mini-B	Guest laptop (not included)
USB A	USB drive (not included)

i NOTE

This works with the primary computer only.

SPECIFICATIONS

SMART Board interactive whiteboard system – Model X885ix/885ix-SMP

RCA jacks The following RCA connection options are available:

System	Connection options
SBX885ix	RCA jacks for audio and composite video inputs are on the separate RCA connector pod included in the ECP box.
SB885ix-SMP	RCA jacks for audio and composite video inputs are on the projector.

Volume controls Controls sound range

Power button Turns the interactive whiteboard and projector on and off

Input selection button Select the projector video and audio inputs from the available sources:

- VGA 1 (default primary computer)
- VGA 2 (default secondary computer)
- Composite
- S-video
- HDMI

Warranty

Interactive whiteboard Your interactive whiteboard has a two-year limited equipment warranty or a five-year limited equipment warranty upon registration. See warranty documents for details.

Projector Your projector has a three-year limited equipment warranty and the projector lamp has a 1000-hour/one-year warranty.

ECP Your ECP has a three-year limited equipment warranty.

Accessories Your accessories have a one-year warranty.

Storage and operating specifications

- Storage**
- Maximum storage temperature: 104°F (40°C)
 - Minimum storage temperature: -4°F (-20°C)

- Operation**
- 41°F to 95°F (5°C to 35°C) from 0' to 6000' (0 m to 1800 m)
 - 41°F to 86°F (5°C to 30°C) from 6000' to 9800' (1800 m to 3000 m)

Computer requirements

You need to connect a computer to your interactive whiteboard. Choose one of the following options:

SPECIFICATIONS

SMART Board interactive whiteboard system – Model X885ix/885ix-SMP

- SBX885ix** A computer or laptop with either a Windows® operating system or Mac operating system software and SMART Notebook software installed. For a complete list of computer requirements, go to smarttech.com/downloads and browse to the latest SMART Notebook release notes applicable to your operating system.
- SB885ix-SMP** A computer or laptop with a Windows operating system and SMART Meeting Pro software installed. For a complete list of computer requirements, go to smarttech.com/downloads and browse to the latest SMART Meeting Pro release notes applicable to your operating system.

i NOTE

If the computer or laptop doesn't have SMART Meeting Pro software installed, it can be connected to the interactive display using the SMART GoWire™ auto-launch cable included with this product. For a complete list of computer requirements, go to smarttech.com/downloads and browse to the latest SMART GoWire cable release notes applicable to your operating system.

SMART order numbers

- SBX885ix** 87" (221 cm) diagonal SMART Board interactive whiteboard with a SMART UX60 projector system. Includes a SMART Notebook software installation DVD.
- SB885ix-SMP** 87" (221 cm) diagonal SMART Board interactive whiteboard with a SMART UX60 projector system. Includes a SMART GoWire cable containing SMART Meeting Pro and Bridgit® conferencing software. An SBX800 CAT5-XT USB extender is also included (see *Cables* on page 2).
- 20-01175-20** Replacement SMART UX60 projector lamp module

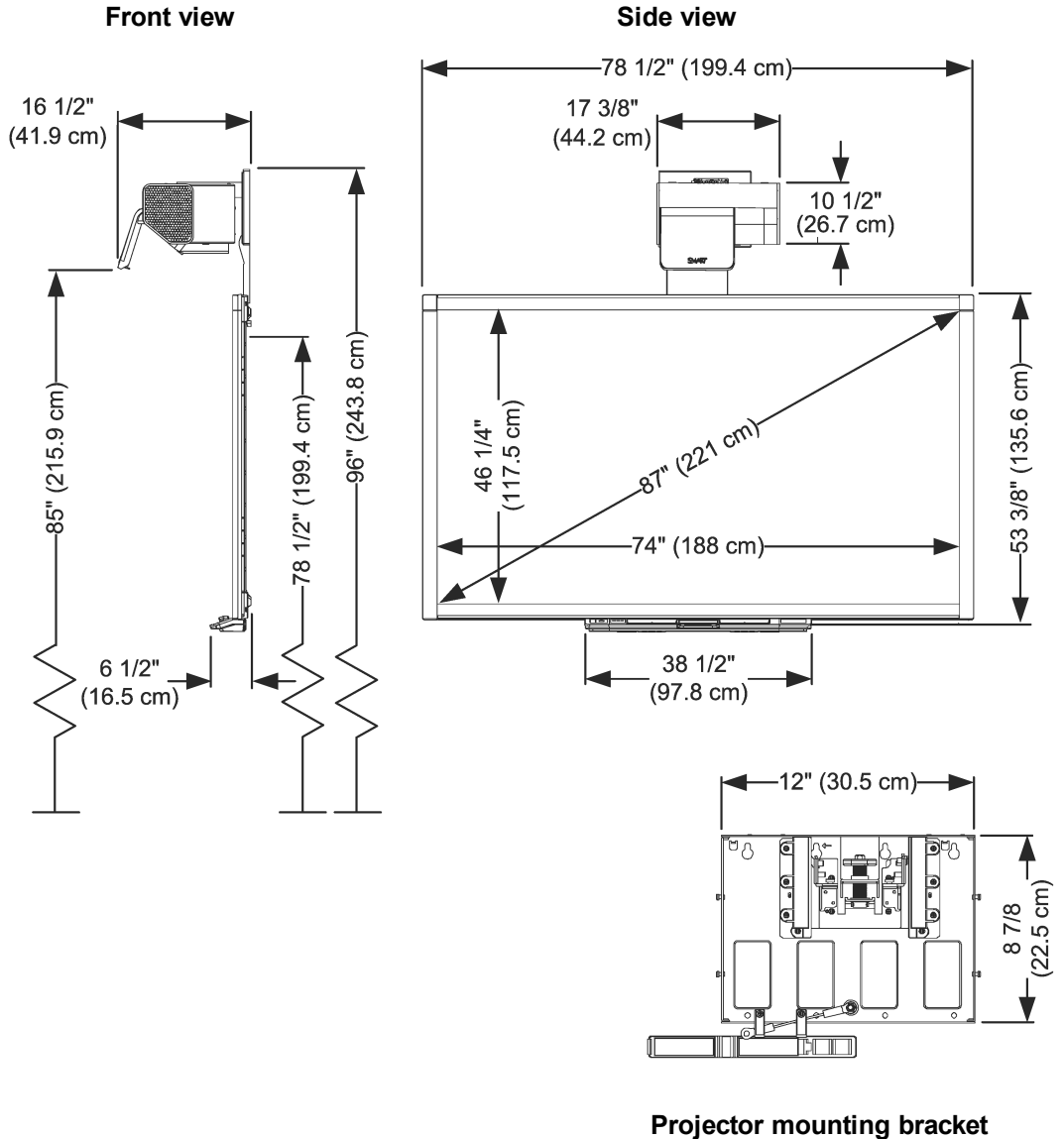
Optional accessories

For more information on additional accessories for your SMART Board 885ix interactive whiteboard, see smarttech.com/accessories.

SPECIFICATIONS

SMART Board interactive whiteboard system – Model X885ix/885ix-SMP

Physical dimensions



smarttech.com/support
smarttech.com/contactsupport

© 2011–2012 SMART Technologies ULC. All rights reserved. SMART Board, SMART Notebook, Bridgit, SMART Meeting Pro, SMART GoWire, DVIT, smarttech, the SMART logo and all SMART taglines are trademarks or registered trademarks of SMART Technologies ULC in the U.S. and/or other countries., BrilliantColor, DLP and Texas Instruments are trademarks of Texas Instruments. All other third-party product and company names may be trademarks of their respective owners. One or more of the following patents: US6320597; US6326954; US6540366; US6563491; US6741267; US6803906; US6829372; US6919880; US6954197; US7151533; US7184030; US7236162; US7411575; US7532206; US7619617; US7643006; US7692625; US7757001; US7880720; USD612396; USD616462; USD617332; USD633546; USD635189 and USD636183. Other patents pending. Contents are subject to change without notice. 07/2012.