

Connecting Your Laptop with the SMART GoWire™ Cable



Need to collaborate on a SMART Board® interactive whiteboard using your laptop? This guide shows you how to connect a laptop with a Microsoft® Windows® operating system to an interactive whiteboard.

The SMART GoWire auto-launch cable contains SMART Meeting Pro™ software and SMART Product Drivers so you don't have to install them on your laptop. The cable connects to a USB receptacle on your laptop and launches SMART Product Drivers.




Use this cable when you want to:

- Collaborate using a laptop that doesn't have SMART software installed
- Work with software that isn't installed on the meeting room computer

To display your desktop on the interactive whiteboard

1. Connect your laptop to the interactive whiteboard using the projector video cable (VGA or HDMI)



2. Press the **Input** button on the interactive whiteboard control panel  or projector remote . If you have an appliance-based interactive whiteboard system, press the laptop icon  on the appliance control panel.

The interactive whiteboard now displays your desktop.

Ensure your desktop is cloned rather than extended. When your desktop is cloned the interactive whiteboard duplicates

your desktop on the interactive whiteboard. This setting makes the SMART Business Toolbar available on the interactive whiteboard. When your desktop is extended rather than cloned, you can't see your desktop icons on the interactive whiteboard and you have to drag open application windows onto the interactive whiteboard screen.

To clone your desktop

The procedure may vary depending on your video card software.

1. Right-click your desktop and select your video card software from the drop-down menu
2. Find display settings and select **clone desktop**

Contact your IT administrator if you need help.

To connect the SMART GoWire cable

1. Connect the USB A plug on the SMART GoWire cable to a USB A receptacle on your laptop



2. Connect the USB A receptacle on the SMART GoWire cable to the USB A plug on the CAT 5 USB extender that runs from the right end of the interactive whiteboard pen tray



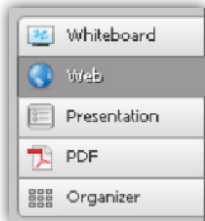
Connecting Your Laptop with the SMART GoWire™ Cable

Once you've connected the SMART GoWire cable, SMART software launches automatically and the *AutoPlay* dialog box appears.

If SMART Meeting Pro software doesn't launch automatically, check with your IT administrator to ask if the Autorun/AutoPlay feature can be enabled on your laptop. Alternatively, you can launch the software using the following procedure.

To launch SMART Meeting Pro software

1. Browse to **My Computer** on your laptop and double-click the **SMART GoWire Meeting Pro** drive
2. Double-click  **MPLauncher**. An *About SMART Meeting Pro* dialog box appears, displaying a license agreement.
3. Click **Accept**. SMART Meeting Pro software launches and the SMART Business Toolbar appears on your desktop.




SMART Meeting Pro modes

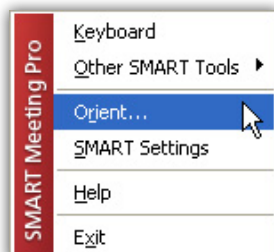
You can switch between Whiteboard, Web, Presentation, PDF, and Organizer modes using the SMART Business Toolbar.

Redirecting touch input

When you write notes on the interactive whiteboard you may notice that they appear on your laptop screen instead of the interactive whiteboard. To redirect touch input to the interactive whiteboard, you need to orient the interactive whiteboard.

To orient the interactive whiteboard

1. Right-click the **SMART Meeting Pro** icon  in the notification area of your laptop, and select **Orient**

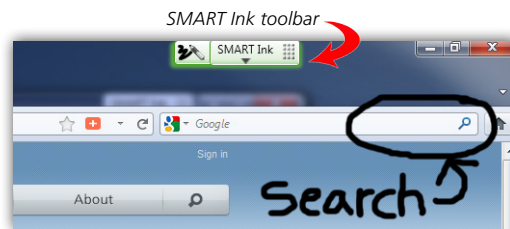


2. Follow the on-screen instructions. Press SPACEBAR on your keyboard to send the orientation screen to the interactive whiteboard.
3. Complete the orientation process at the interactive whiteboard by pressing each orientation target as it appears on the interactive surface

Now your notes appear on the interactive whiteboard.

SMART Ink™

SMART Meeting Pro software includes SMART Ink. SMART Ink enables you to write notes outside of SMART Meeting Pro software. You can write over applications, websites and videos.



Group presentation tips

The connected laptop and the interactive whiteboard both act as input devices for the interactive whiteboard system. The best practice when delivering a group presentation is to control the presentation from one location. Work together at the interactive whiteboard, and if you need to use the computer, ensure that other presenters wait to touch the interactive whiteboard.



Additional resources

To learn more about SMART Meeting Pro software and SMART Ink, access the **My Meeting** tutorial at smarttech.com/SMARTMeetingProTutorial.

© 2012 SMART Technologies. All rights reserved. SMART GoWire, SMART Board, SMART Meeting Pro, SMART Ink, smarttech, the SMART logo and all SMART taglines are trademarks or registered trademarks of SMART Technologies in the U.S. and/or other countries. All other third-party product and company names may be trademarks of their respective owners. Printed in Canada 03/2012.