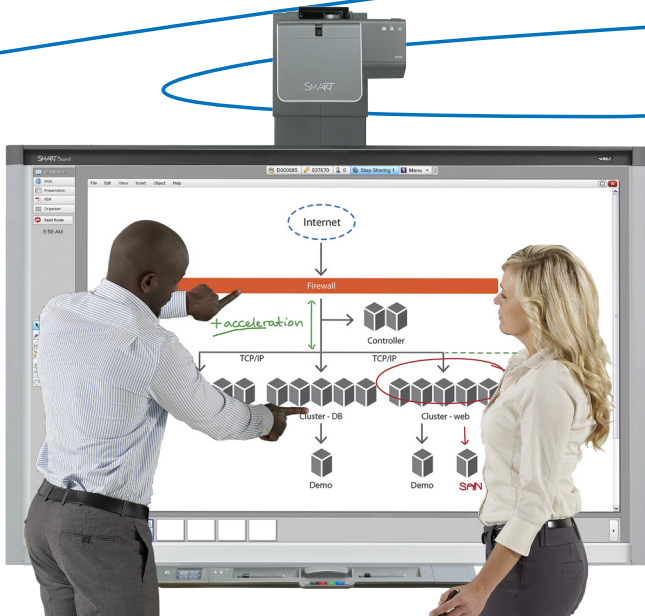


# Interactive Solution Basics: SMART Board® 885i5e System

SMART®



The SMART Board 885i5e interactive whiteboard system comes with SMART Meeting Pro™ software and includes an interactive whiteboard, an integrated projector and an appliance that performs many of the functions of a computer. The appliance computing device eliminates the need for a dedicated meeting room computer and creates a secure, stand-alone system.

By touching the interactive surface with your finger or a pen from the pen tray you can:

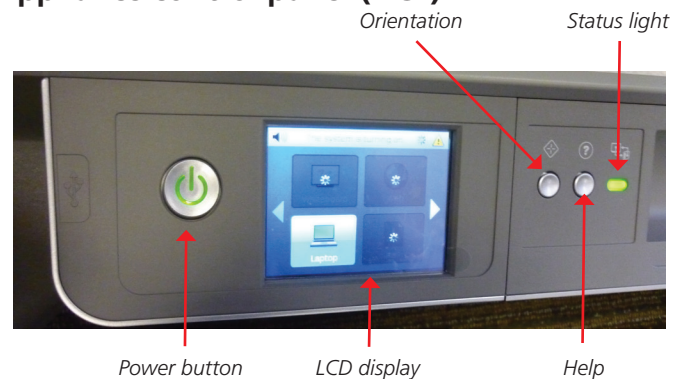
- Open and close applications
- Conference with others
- Create new documents or edit existing ones
- Visit websites
- Manipulate objects
- Control video players

Two users can draw on the interactive surface at the same time, and you can use an array of touch and multitouch gestures to control software applications. You can easily save your work for future reference and distribution.

## Waking up your interactive whiteboard

Ensure that the computer is on and that the projector's status light is green. Press the **Power** button on the appliance control panel (ACP) to wake your interactive whiteboard from Standby mode.

## Appliance control panel (ACP)



## Pen tray buttons



# Interactive Solution Basics: SMART Board 885i5e System

## Writing and erasing notes

Pick up a pen from the pen tray and press one of the four color buttons to select the digital ink color.

To write over your desktop or an open application, begin writing with the pen on the interactive whiteboard. To erase, pick up the eraser from the pen tray and move it in a smooth motion over your notes.

If the interactive whiteboard isn't registering your touch accurately, follow the orientation instructions at the end of this guide.

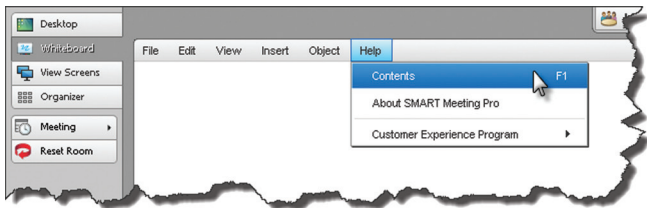
## Getting started with SMART Meeting Pro software



SMART Meeting Pro is collaboration and meeting productivity software that helps transform meetings into collaborative work sessions where teams actively learn and share knowledge to enable faster, more effective decision-making. Take the *My Meeting* tutorial to learn how to use this software with the SMART solutions in your meeting room.

To take the tutorial on your interactive whiteboard:

1. Press **Whiteboard** on the SMART Business Toolbar
2. Select **Help > Contents**



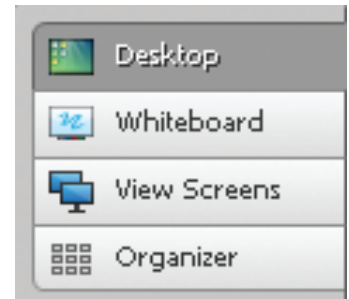
3. Press **Tutorials**, and then select the **SMART Meeting Pro software** link. The *My Meeting* tutorial opens in a new window.

To take the tutorial online, browse to [smarttech.com/SMARTMeetingProTutorial](http://smarttech.com/SMARTMeetingProTutorial).

## Displaying content

You can switch between Whiteboard, Web, Presentation, PDF and Organizer modes using the SMART Meeting Pro business toolbar.


Use Whiteboard mode for brainstorming and Web mode for browsing the Internet. Use Presentation mode to view and deliver Microsoft® PowerPoint® presentations. Use PDF mode to view and write on PDF files. Organizer mode is your meeting dashboard. Use it to view meeting details and manage all connected displays.



## Orientation

Orient your interactive whiteboard whenever the mouse pointer isn't properly aligned with your finger or a pen tray pen when you touch the interactive surface.

To orient your interactive whiteboard:

1. Press the **Orientation** button  on the pen tray. The orientation screen appears.
2. Pick up a pen from the pen tray
3. Begin at the top-left corner of the screen, and touch the center of the target firmly with the tip of the pen. When you remove the pen, the target moves to the next orientation point.
4. Repeat step 3 for each orientation target. When you complete the process, the orientation screen closes.

## Resources

For more information on:

- Your interactive whiteboard system, download the user's guide at [smarttech.com/support](http://smarttech.com/support)
- Connecting a guest laptop, visit [smarttech.com/connectGoWire](http://smarttech.com/connectGoWire)
- How Interactive visual collaboration solutions can transform the way you work, visit [smarttech.com/trainingforbusiness](http://smarttech.com/trainingforbusiness)