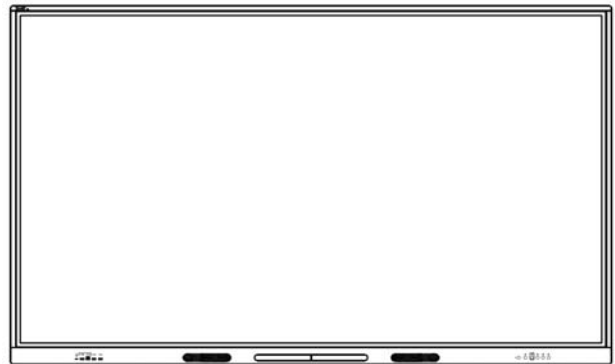




SMART[®]



Service Parts Diagrams

For Model:

GX065-V3

GX075-V3

GX086-V3

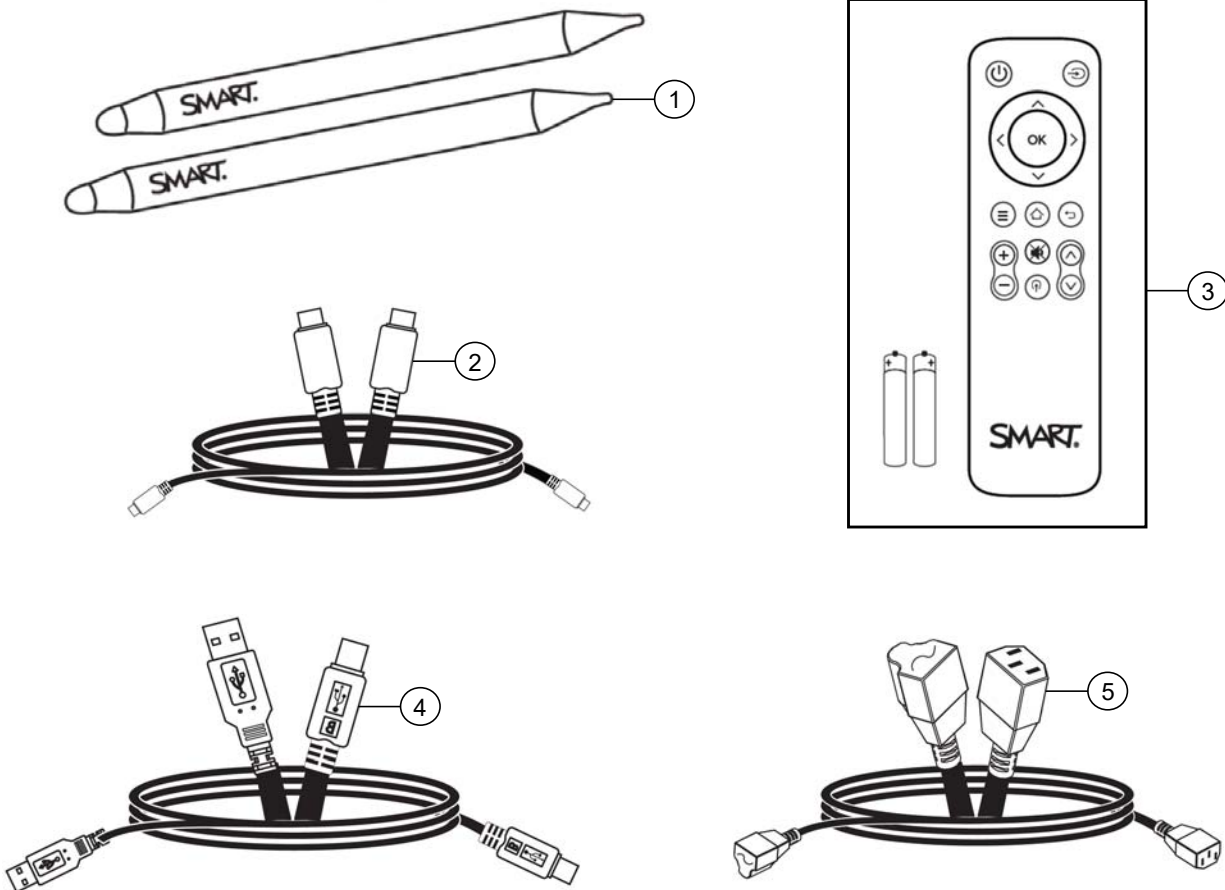
Service Parts Diagrams Revision History

Revision 1 - August, 2024

- New document

First Customer Ship: June, 2024

Service Parts



Item	Part No.	Qty	Description
1	1035246	2	Stylus, GX series
2	USB-C-1832	1	Cable, USB, C-C USB3.2, 100W, 6' (1.8 m)
3	1035792	1	Assembly, remote control
4	1028289	1	Cable, USB, A-B, 16' (5.0 m)
5	1022063	1	Cable, power, North America, 8' (2.4 m)
5	93-055	1	Cable, power, United Kingdom, 8' (2.4 m)
5	93-056	1	Cable, power, Australia, 8' (2.4 m)
5	93-054	1	Cable, power, Europe, 8' (2.4 m)
5	93-00708-20	1	Cable, power, China, 8' (2.4 m)
5	93-00654-20	1	Cable, power, Japan, 8' (2.4 m)
5	93-063	1	Cable, power, South Africa, 8' (2.4 m)
5	1018969	1	Cable, power, Singapore, 14' 9" (4.5 m)
5	1018970	1	Cable, power, India, 14' 9" (4.5 m)
5	1018971	1	Cable, power, Saudi Arabia, 14' 9" (4.5 m)
5	1018972	1	Cable, power, Brazil, 14' 9" (4.5 m)

5	1025597	1	Cable, power, Argentina, 14' 9" (4.5 m)
5	1025603	1	Cable, power, Chile and Italy, 14' 9" (4.5 m)
5	1030859	1	Cable, power, Korea, 8' (2.4 m)
Not shown	1040446	1	Kit, packaging, 65"
Not shown	1040447	1	Kit, packaging, 75"
Not shown	1040448	1	Kit, packaging, 86"