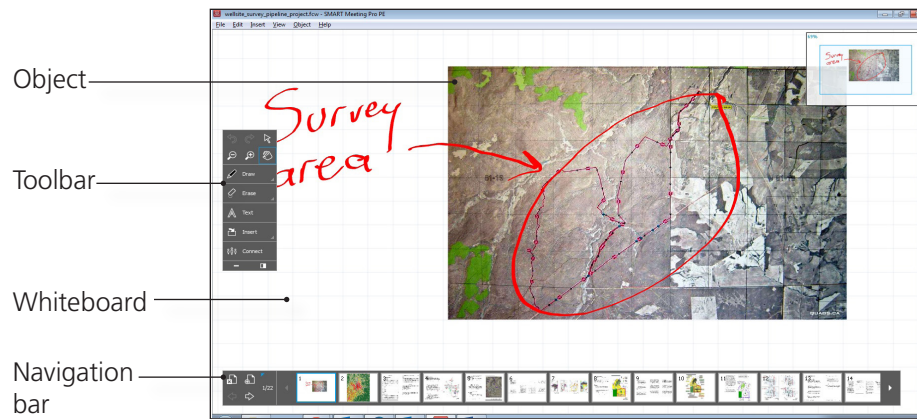


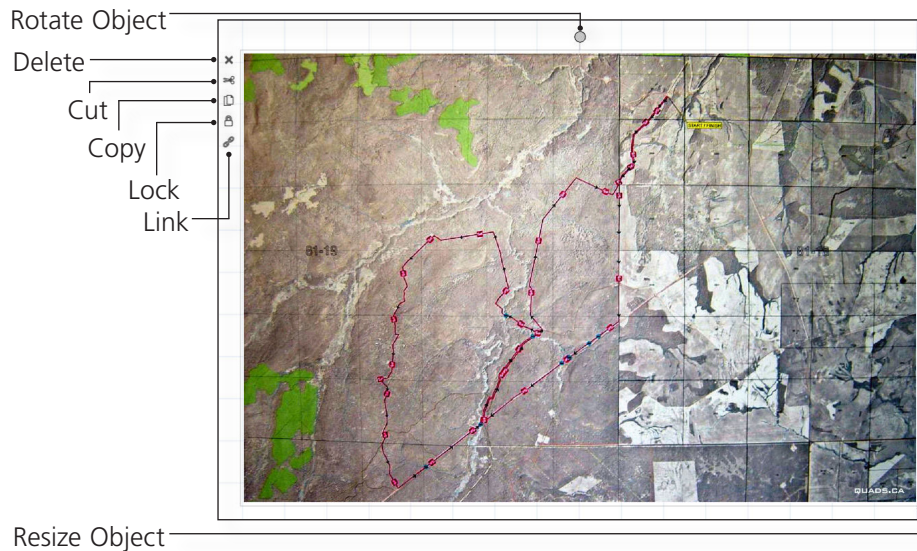


SMART Meeting Pro™ PE (Personal Edition)

User Interface



Object Tools



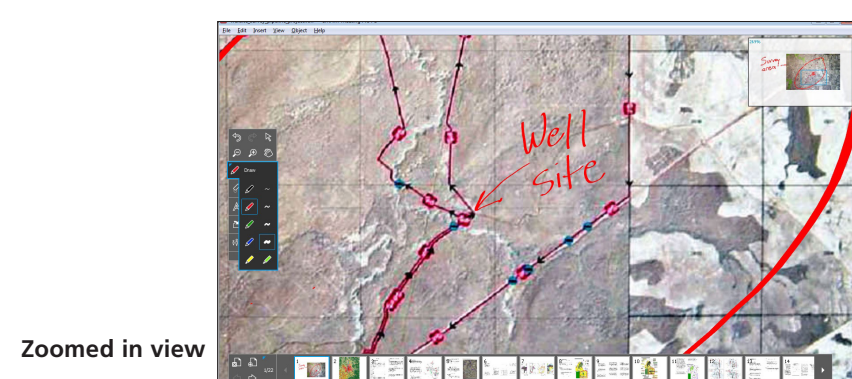
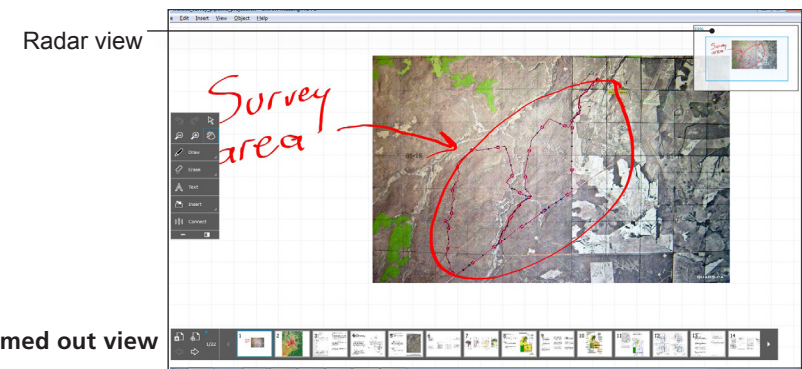
The Unbound Workspace

The unbound workspace of Meeting Pro Personal Edition enables you to collaborate on enormous sets of data. This is useful when working with large maps, design reviews, or engineering schematics.

To navigate the unbound workspace, click **Pan** on the toolbar. You can also zoom in and out as far as you want by clicking the Zoom tool, or using the scroll wheel on your mouse.

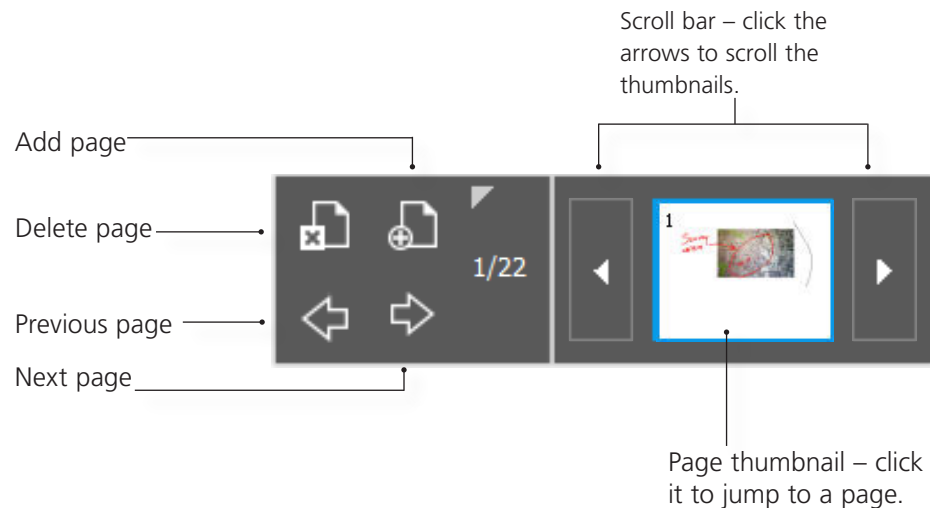
Radar View

The radar view is in the top right corner of the whiteboard. You can use the radar view to help you navigate the unbound workspace.

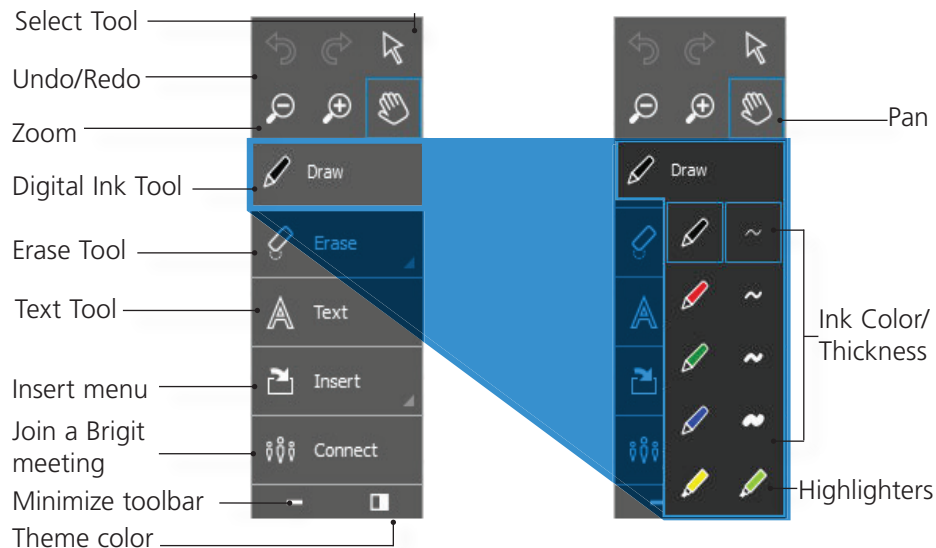


SMART Meeting Pro™ PE (Personal Edition)

Navigation Toolbar

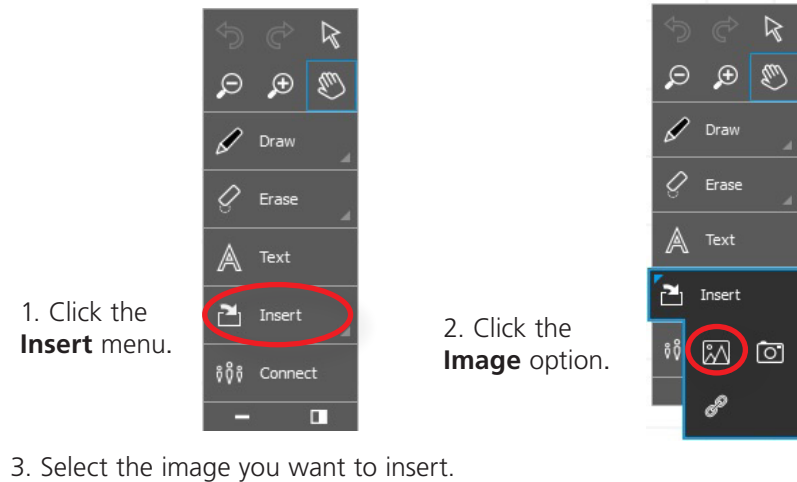


Toolbar



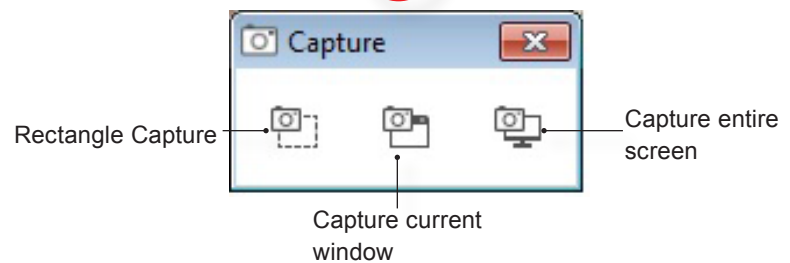
Images and Screen Captures

Insert an Image



Screen Capture

1. Click the **Insert** menu.
2. Click the **Capture** option. The Capture window appears.

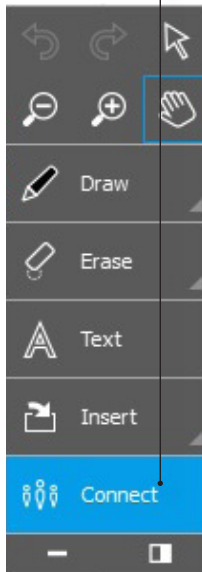


3. Open the window containing the image you want to capture.
4. Select the capture option you prefer.
5. Capture your image. The image automatically appears on the current whiteboard page in SMART Meeting Pro Personal Edition.

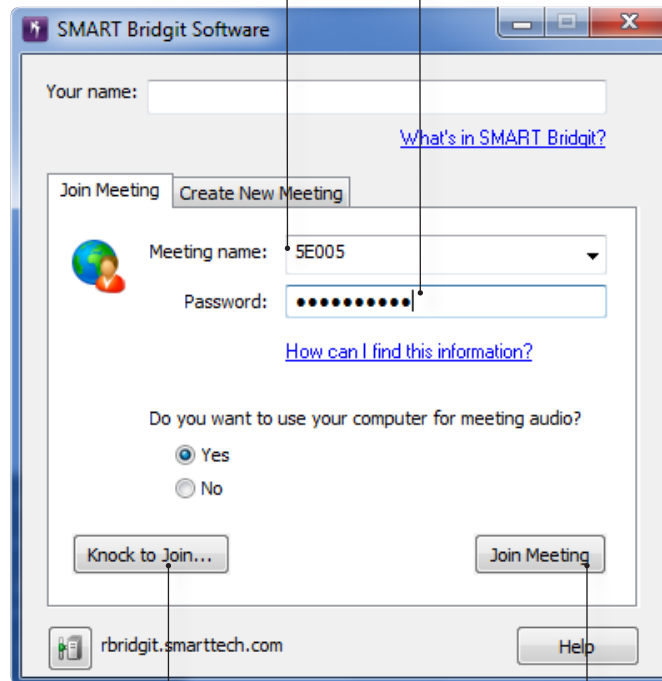
SMART Meeting Pro™ PE (Personal Edition)

Joining a Brigit meeting

1. Click **Connect**.



2. Enter the meeting name. 3. Enter the meeting password.



Note: Click here to ask the meeting host for permission to join the meeting without the password.

4. Click **Join the Meeting**.

Brigit toolbar

6. To share your screen, click here.



Resources

For more information about SMART Brigit conferencing software, click [here](#).

For more information on SMART Meeting Pro PE (Personal Edition), visit our support site by clicking [here](#).