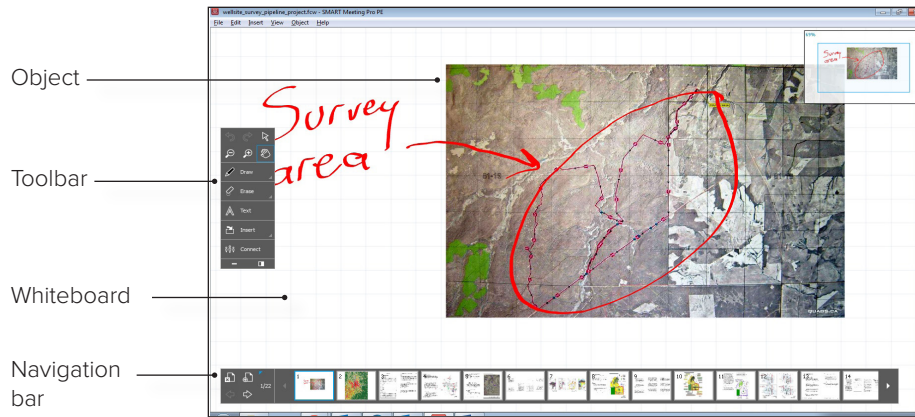


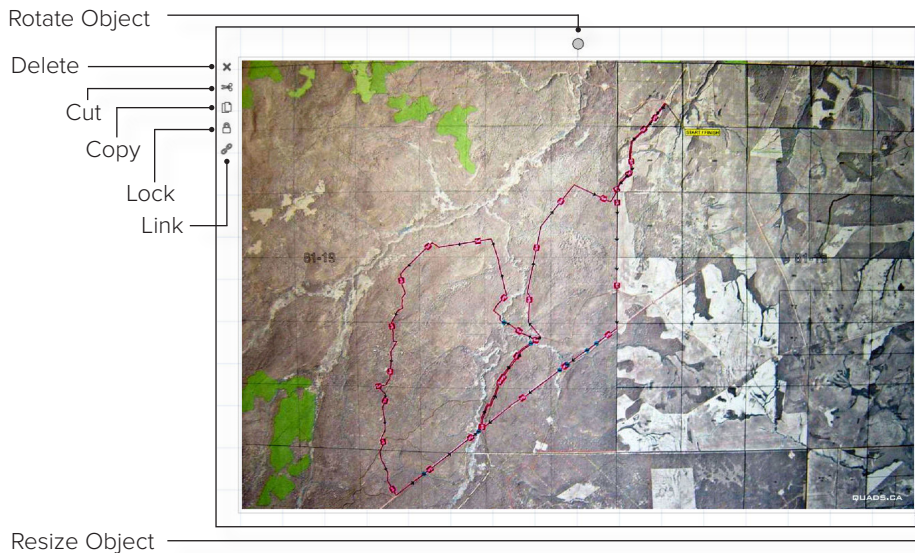


# SMART Meeting Pro™ PE (Personal Edition)

## User Interface



## Object Tools



## The Unbound Workspace

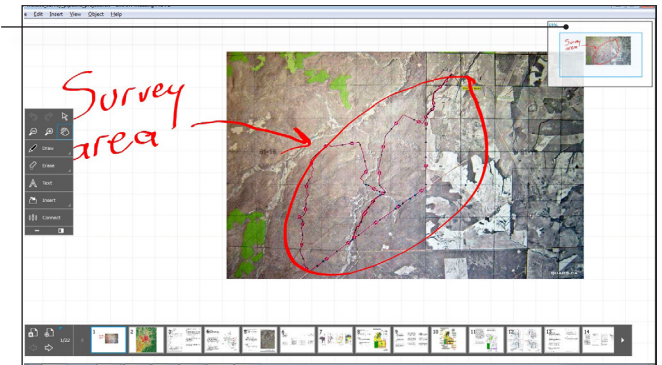
The unbound workspace of Meeting Pro Personal Edition enables you to collaborate with content and interact with high resolution images. This is useful when working with large maps, design reviews, or engineering schematics.

To navigate the unbound workspace, click Pan on the toolbar. You can also zoom in and out as far as you want by clicking the Zoom tool, or using the scroll wheel on your mouse.

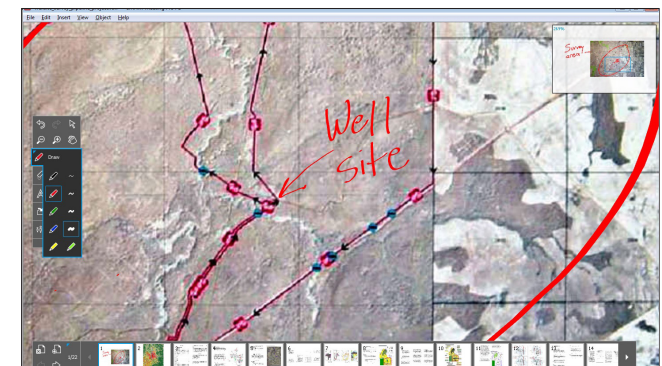
## Radar View

The radar view is in the top right corner of the whiteboard. You can use the radar view to help you navigate the unbound workspace.

Radar view



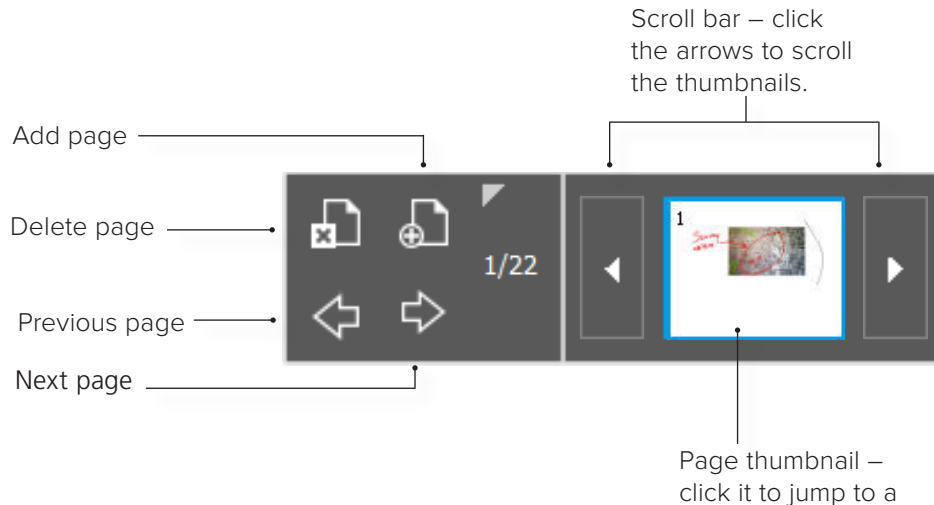
Zoomed out view



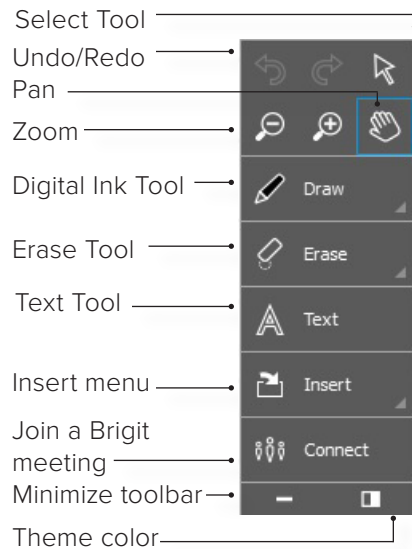
Zoomed in view

# SMART Meeting Pro™ PE (Personal Edition)

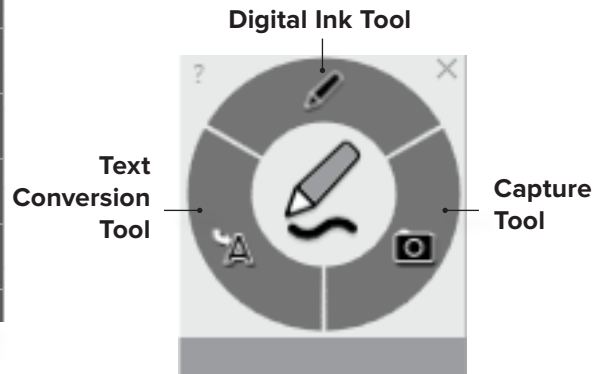
## Navigation Toolbar



## Toolbars



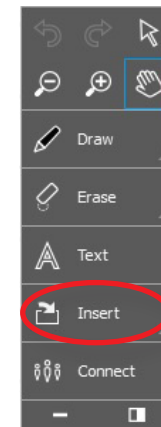
The newest version of SMART Meeting Pro Personal Edition includes the dynamic toolbar. The toolbar will appear when running SMART Meeting Pro Personal Edition on a SMART Interactive Flat Panel.



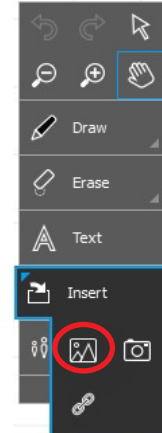
## Images and Screen Captures

### Insert an Image

1. Click the **Insert** menu.



2. Click the **Image** option.

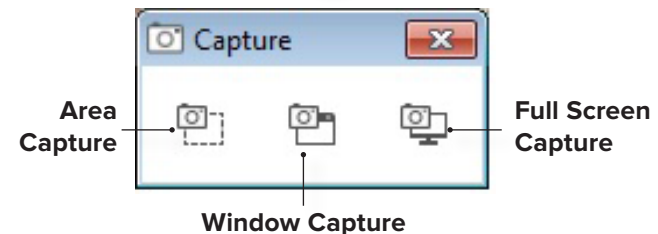


3. Select the image you want to insert.

### Screen Capture

1. Click the **Insert** menu.

2. Click the **Capture** option.  The Capture window appears.



3. Open the window containing the image you want to capture.

4. Select the capture option you prefer.

5. Capture your image. The image automatically appears on the current whiteboard page in SMART Meeting Pro Personal Edition.

For more information on SMART Meeting Pro PE (Personal Edition), visit our support site by clicking [here](#).