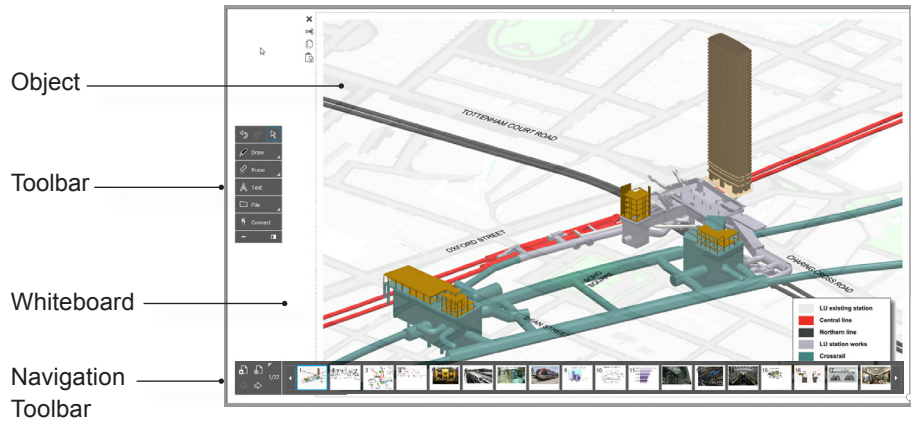




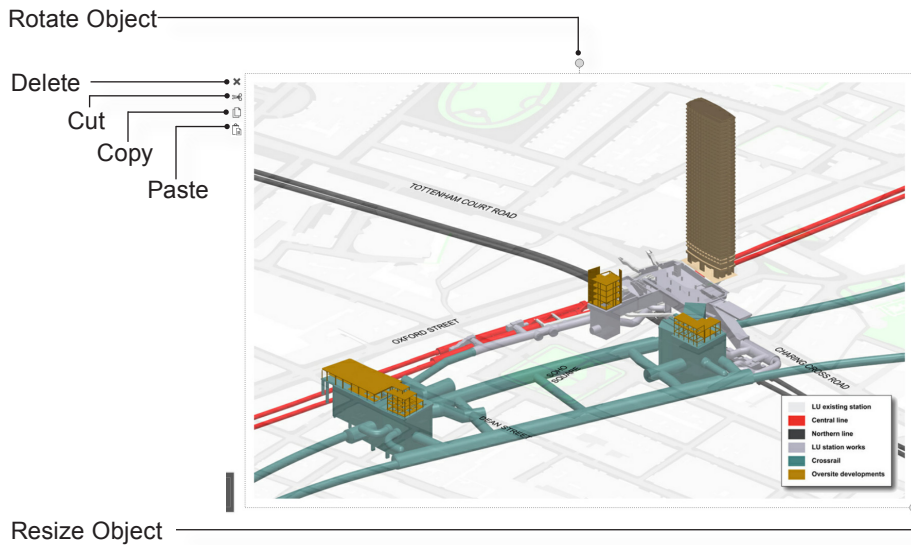
SMART Meeting Pro™ PE (Personal Edition)

Now that you're using SMART Meeting Pro PE (Personal Edition), we'll show you where to find what you need.

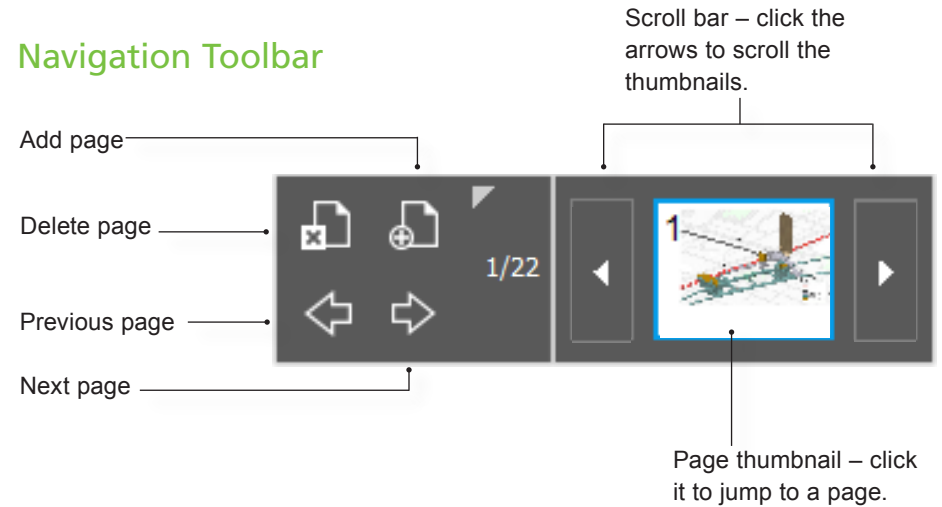
User Interface



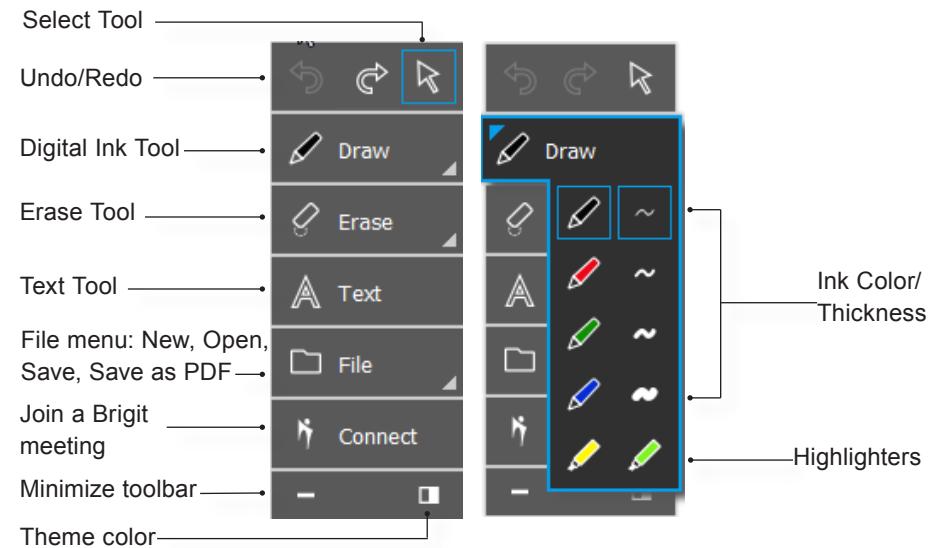
Object Tools



Navigation Toolbar



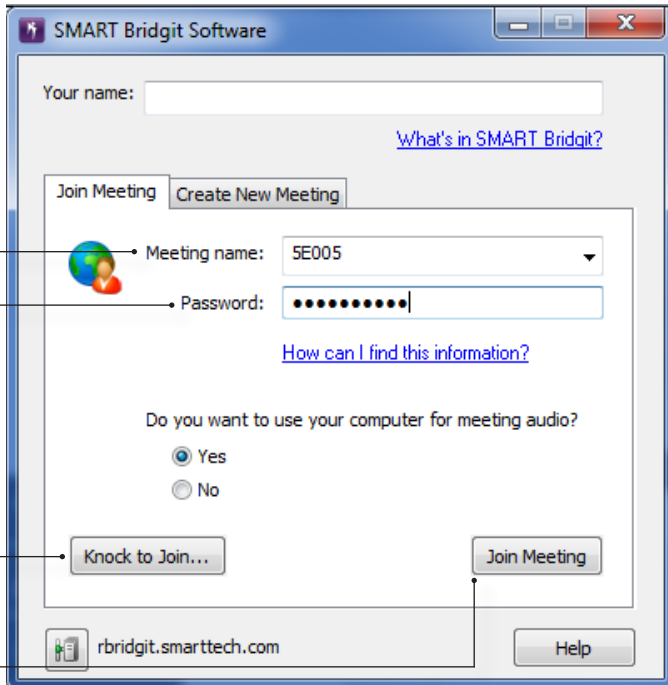
Toolbar



Joining a Brigit meeting



1. Click here.



2. Enter the meeting name.

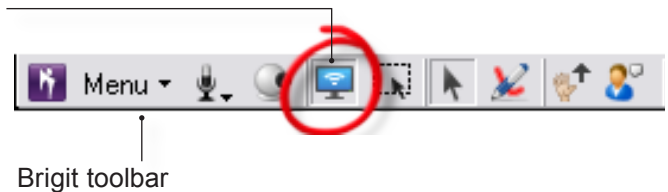
3. Enter the meeting password.

4. Click here if you lack the password.

5. Click here to join the meeting.

6. To share your screen, click here.

Note: Meeting room users must touch 'View Screens'.



Resources

For more information about SMART Brigit conferencing software, click [here](#).

For more information on SMART Meeting Pro PE (Personal Edition), visit our support site at smarttech.com/support.