



SMART[®] Exemplary Schools

Inspiring greatness by building connections that matter

Program overview

A global community of innovation

Leading educational technology companies, such as Apple, Google, and SMART Technologies, work to identify schools around the globe that are **developing innovative practices** for implementing **technology to improve teaching and learning**.

SMART awards the SMART Exemplary School designation to schools that demonstrate innovative leadership in **using educational technology** to deliver **positive learning outcomes**.



Participating schools become part of a **community of like-minded institutions** and educators who are committed to sharing **insights, strategies, and successes**, fostering a **collaborative culture** of continuous growth and improvement.

The SMART Exemplary Schools program is by invitation only for schools and education organizations that meet the program qualification and eligibility requirements.

Program recognition

The SMART Exemplary Schools program includes two types of recognition:

- ☆ SMART Exemplary Schools
- ☆ SMART Showcase Schools



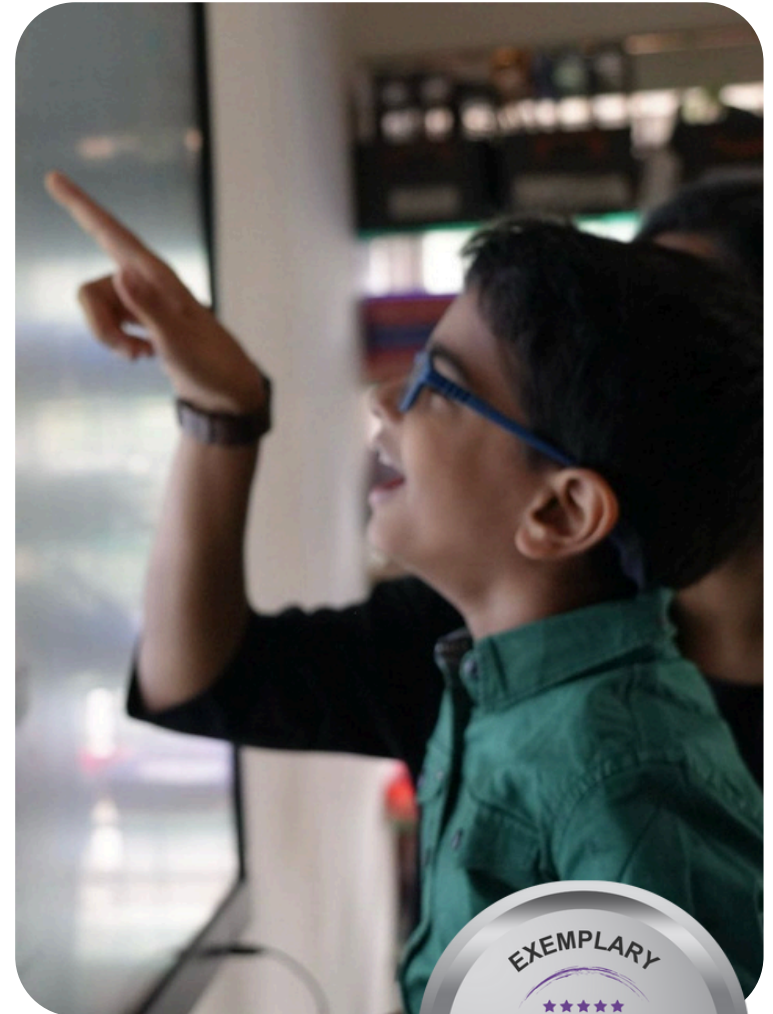
“Being part of the SMART Exemplary Schools program provides access to a supportive network of educators and leaders who share best practices and collaborate on effective strategies. Additionally, the program enhances our professional development, empowering teachers with the skills needed to engage students in dynamic and impactful ways.”

*Dr. Marim El-Fayoumi, Principal,
Al Firdous Private School, Oman*

SMART Exemplary Schools

SMART Exemplary Schools are recognized for their **purposeful vision** in using educational technology to enhance student outcomes. These schools have demonstrated a **clear commitment to implementing SMART's products** to foster innovative teaching practices and improve learning experiences. School leaders have aligned and informed their digital strategy through the use of the [EdTech Assessment Tool](#).

This recognition **validates the school's strategic vision** for technology integration and its beneficial effect on student outcomes. It places the school within a **network of forward-thinking educators and institutions**, providing access to exclusive training, support, and professional development opportunities. This award helps schools **gain visibility and credibility** as leaders in educational innovation.



SMART Exemplary Schools

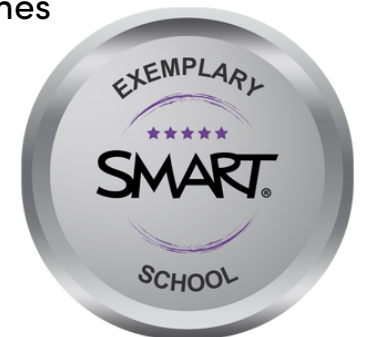


Characteristics of SMART Exemplary Schools

- Innovative use of educational technology **throughout** the school
- Passionate school leadership committed to **purposeful implementation** of technology
- Use of SMART's **EdTech Assessment Tool** to inform their digital strategy
- **Active participation** in professional learning and SMART communities

Distinctions SMART Exemplary Schools receive

- Global recognition opportunities, including a customized **plaque**
- Access to SMART's **community** of innovative SMART Exemplary Schools around the world
- Continuing professional learning **opportunities** to ensure staff are well-equipped to use SMART's products to improve learning outcomes



SMART Showcase Schools

The SMART Showcase School recognition is the **highest tier**, awarded to institutions that **exemplify best practices in integrating SMART solutions**. These schools not only achieve **excellence in using technology** to improve outcomes but also serve as **role models** and **training grounds** for other schools, demonstrating effective alignment with instructional practices.



Showcase Schools gain **prestige** and **influence** as thought leaders in the education community. The award enables them to **share** their successes, **host** educators from other institutions, and contribute to **shaping the future** of SMART products and strategies.

This recognition brings the distinction of being a flagship school that helps **elevate instructional practices** on a global scale, all while deepening engagement with the latest advancements in educational technology.



Characteristics of SMART Showcase Schools

Innovative use of SMART solutions

- Strategic **implementation** and **use** of SMART education products (interactive displays or Lumio) to improve teaching, learning, and student outcomes at a **campus** or **system-wide level**.
- Develops and shares **innovative practices** for using SMART products to enhance teaching and learning.

Visionary leadership

- Senior school leadership has developed a thoughtful **vision** for implementing SMART products to **achieve meaningful educational outcomes** and support personalized, student-centered learning, including use of the **Ed-Tech Assessment Tool** to build this vision.
- School leaders use **data-driven practices** and regular assessments of technology's effectiveness on student learning and outcomes.
- Senior school leadership support for becoming a SMART Showcase School.
- An identified SMART Showcase School **lead**.

Focus on ongoing professional learning

- Educators actively engage in sharing **insights, strategies, and successes** of using SMART products to foster a collaborative culture of continuous growth
- School leadership provides **regular professional development sessions** dedicated to effective use of SMART products.
- Active teacher participation in SMART **professional learning** (webinars, coursework, etc.)
- At least 25% of teachers are **SMART Ambassadors**

Showcase excellence with SMART

- Willingness to facilitate and host SMART **customers visits** to the school and be a SMART reference
- Willingness to **support SMART activities** such as case studies, success stories, webinars, blogs, videos, and conferences
- Regularly share their SMART experiences on **social media** using **#WeAreSMART** and **#GoLumio**



Distinctions SMART Showcase Schools receive

Global Recognition

- A recognition **plaque** acknowledging the SMART Showcase School designation
- Access to a SMART Showcase School **logo** for use in documentation
- Opportunities for local and global **recognition** through SMART collateral and activities, such as case studies, blogs, projects, and events
- Featured in local and global **communications**, such as press releases, social media, and website features

Professional Learning

- Access to "train the trainer" professional development
- School members are invited to participate and be spotlighted in **SMART events**

Innovative Community

- Ability to contribute to and access exclusive SMART Exemplary Schools **group** within the larger SMART Ambassador community
- Opportunities to collaborate with **product developers**, including sharing feedback, previewing future product development, and participating in pilot projects
- Opportunities to share **successes and best practices** with other schools globally

